

INDUSTRIAL | FOR SALE



19441 Rt. 12F, Brownville, New York 13615



CONTACT EXCLUSIVE AGENTS:



Stephen Saleski
Real Estate Associate Broker
Mobile (315) 727-3103
ssaleski@suttoncos.com



Stephen Saleski
Licensed Real Estate Salesperson
Mobile (315) 632-1632
ccheney@suttoncos.com

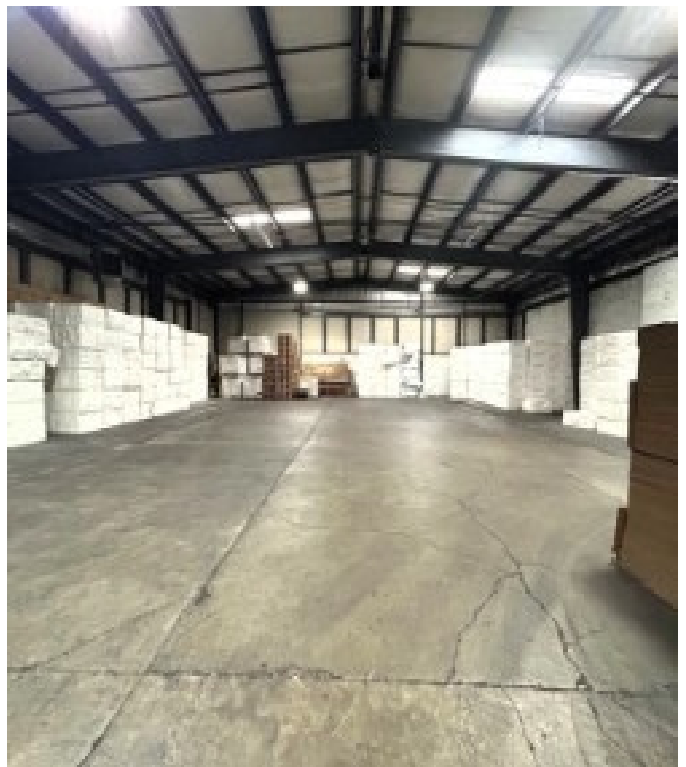
SUTTON REAL ESTATE COMPANY

525 Plum Street, Suite 100 | Syracuse, New York 13204 | (315) 424-1111 (Main) | www.suttoncos.com

All information contained herein is from sources deemed reliable and is submitted subjected to errors, omissions, changes in price or other conditions, prior sale, leasing without notice. Principals should not rely solely upon the information contained herein.

PROPERTY FEATURES

- 17,600+/- SF Warehouse on 1.5 Acres Near Watertown
- 16' Ceiling Height and (3) - 8' x 8' Dock Doors
- 480 V / 3 Phase Power, Heated and Dry Sprinklered
- Great Location - 2 miles East to I-81 or West to Watertown Airport



19441 Rt. 12F, Brownville, New York 13615

INDUSTRIAL | FOR SALE

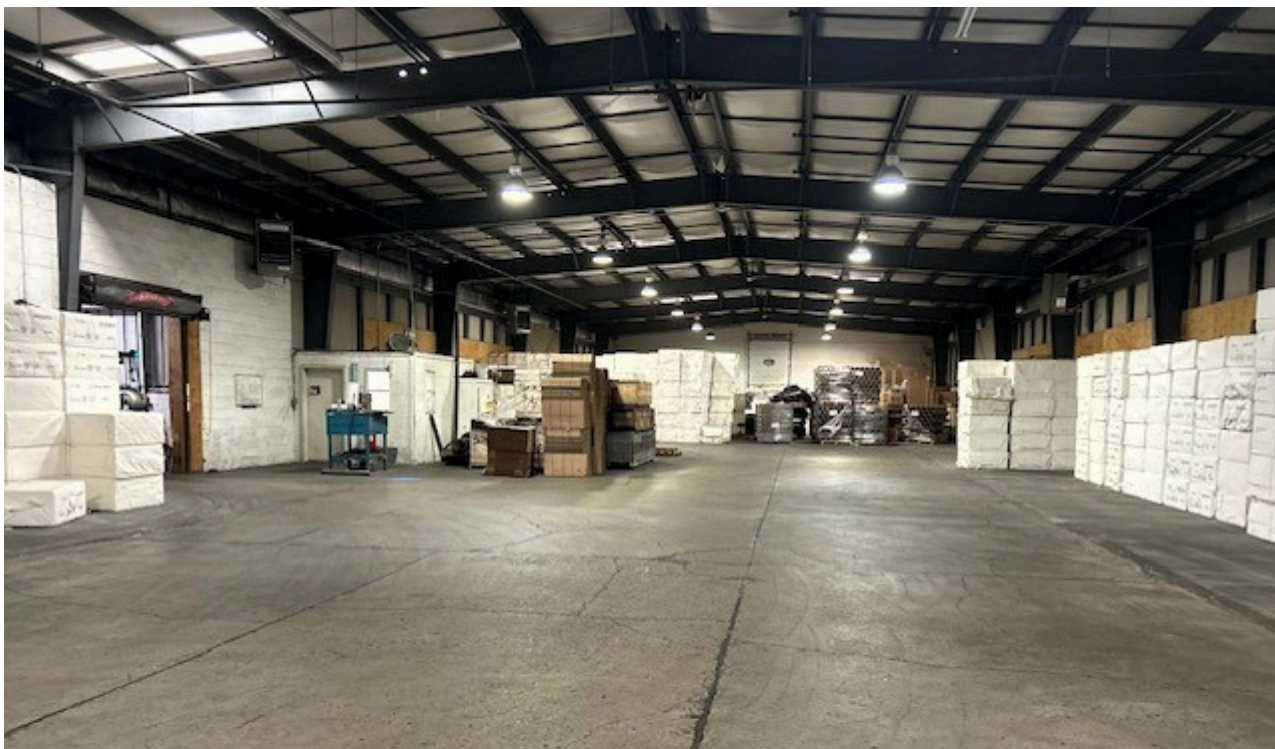




19441 Rt. 12F, Brownville, New York 13615

INDUSTRIAL | FOR SALE





19441 Rt. 12F, Brownville, New York 13615

INDUSTRIAL | FOR SALE



FOR MORE

INFORMATION
PLEASE CONTACT

CONTACT EXCLUSIVE AGENTS::



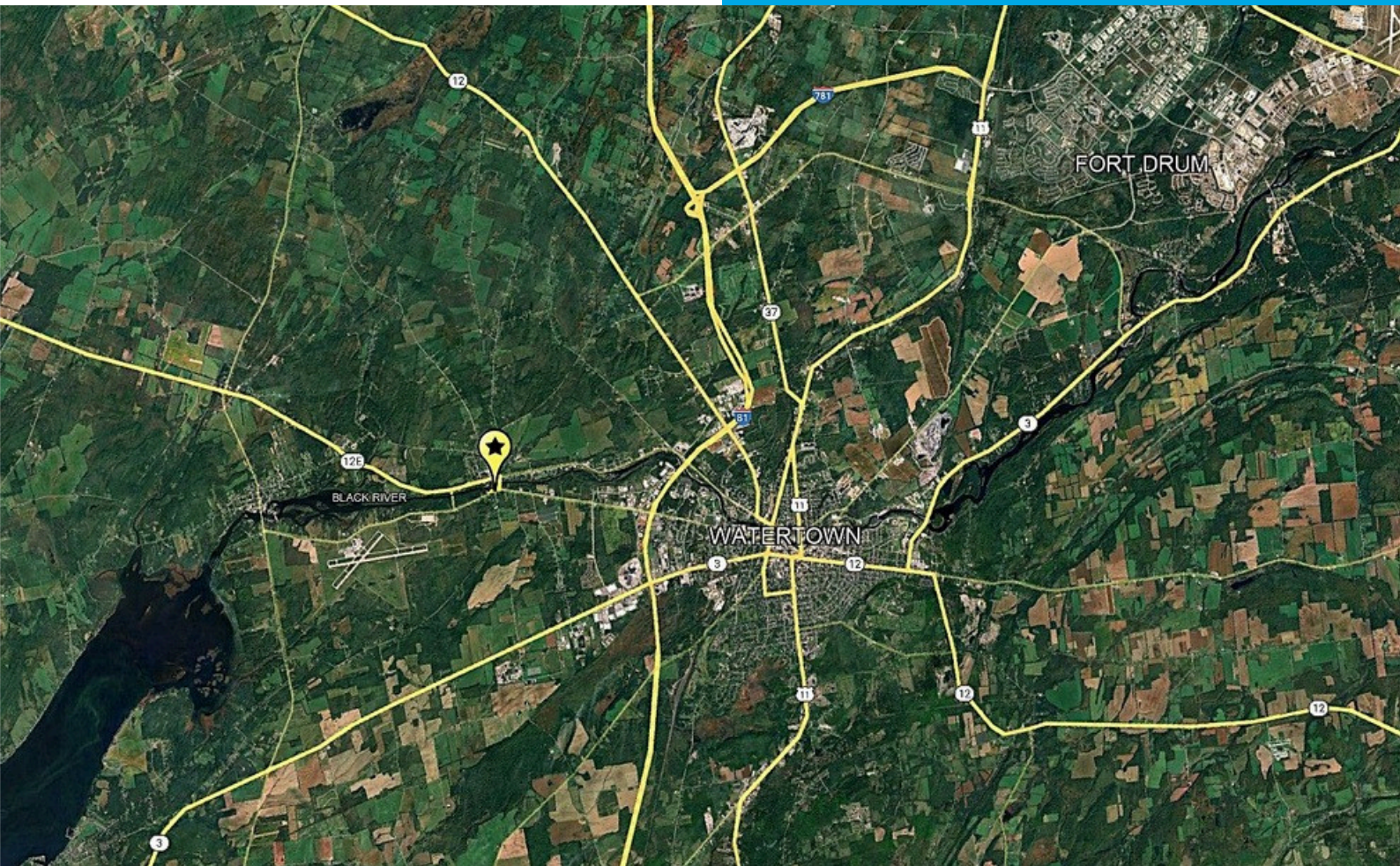
Stephen Saleski
Real Estate Associate Broker
Mobile (315) 727-3103
ssaleski@suttoncos.com



Stephen Saleski
Licensed Real Estate Salesperson
Mobile (315) 632-1632
ccheney@suttoncos.com

SUTTON REAL ESTATE COMPANY

525 Plum Street, Suite 100
Syracuse, New York 13204
(315) 424-1111 (Main)
www.suttoncos.com



INDUSTRIAL | FOR SALE



19441 Rt. 12F, Brownville, New York 13615