

**SUTTON**  
REAL ESTATE COMPANY

**FOR SALE OR LEASE | RETAIL**

143 Midler Park Drive, Syracuse, NY 13206



## PROPERTY FEATURES

- Approx 5000+/- SF
- Former lab space, can be used for many purposes
- Parking: Approx 15 spaces
- Maximum ceiling height: approx. 15 feet
- Construction: Roll out roof block building with many extras

### CONTACT EXCLUSIVE AGENTS:

**Kenneth Tyminski**

*Real Estate Associate Broker*

(M): 315.243.4678

[ktyminski@suttoncos.com](mailto:ktyminski@suttoncos.com)

### SUTTON REAL ESTATE COMPANY

525 Plum Street, Suite 100

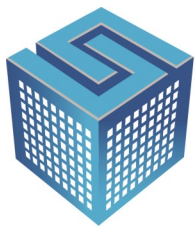
Syracuse, New York 13204

315.424.1111

[www.suttoncos.com](http://www.suttoncos.com)

*All information contained herein is from sources deemed reliable and is submitted subjected to errors, omissions, changes in price or other conditions, prior sale, leasing without notice. Principals should not rely solely upon the information contained herein.*





**SUTTON**  
REAL ESTATE COMPANY

**FOR SALE OR LEASE | RETAIL**

143 Midler Park Drive, Syracuse, NY 13206



**CONTACT EXCLUSIVE AGENTS:**

**Kenneth Tyminski**

*Real Estate Associate Broker*

(M): 315.243.4678

[ktyminski@suttoncos.com](mailto:ktyminski@suttoncos.com)

**SUTTON REAL ESTATE COMPANY**

525 Plum Street, Suite 100

Syracuse, New York 13204

315.424.1111

[www.suttoncos.com](http://www.suttoncos.com)

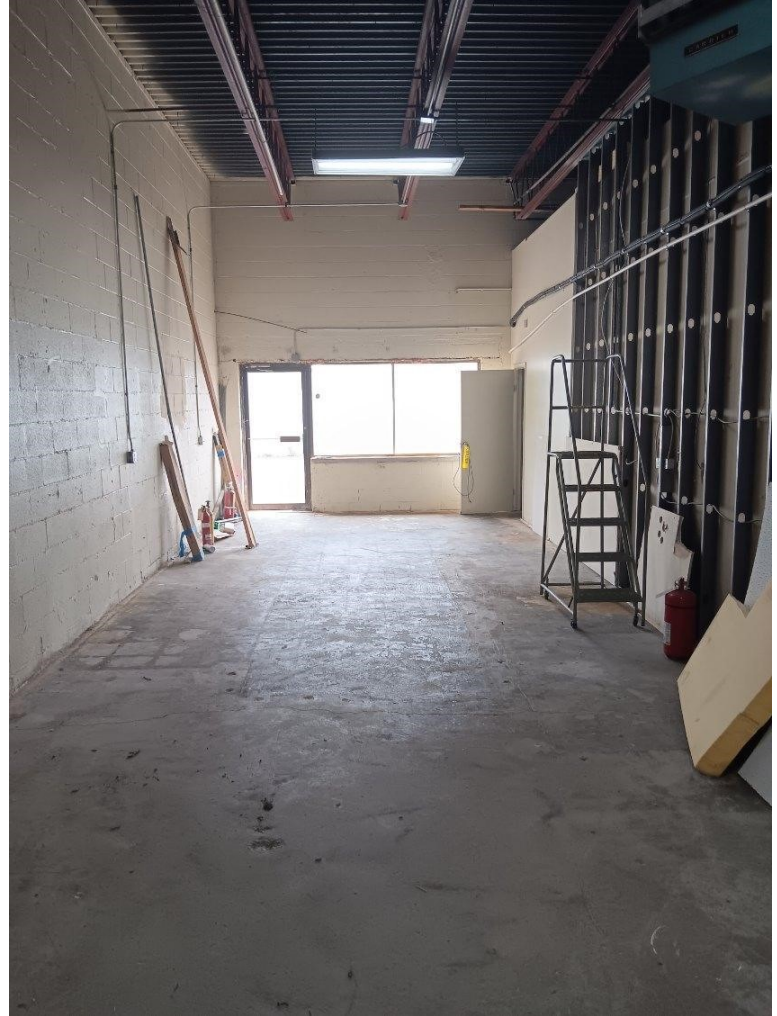
*All information contained herein is from sources deemed reliable and is submitted subjected to errors, omissions, changes in price or other conditions, prior sale, leasing without notice. Principals should not rely solely upon the information contained herein.*





**FOR SALE OR LEASE | RETAIL**

143 Midler Park Drive, Syracuse, NY 13206



**CONTACT EXCLUSIVE AGENTS:**

**Kenneth Tyminski**

*Real Estate Associate Broker*

(M): 315.243.4678

[ktyminski@suttoncos.com](mailto:ktyminski@suttoncos.com)

**SUTTON REAL ESTATE COMPANY**

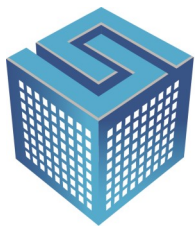
525 Plum Street, Suite 100

Syracuse, New York 13204

315.424.1111

[www.suttoncos.com](http://www.suttoncos.com)

*All information contained herein is from sources deemed reliable and is submitted subjected to errors, omissions, changes in price or other conditions, prior sale, leasing without notice. Principals should not rely solely upon the information contained herein.*



**SUTTON**  
REAL ESTATE COMPANY

**FOR SALE OR LEASE | RETAIL**

143 Midler Park Drive, Syracuse, NY 13206



**CONTACT EXCLUSIVE AGENTS:**

**Kenneth Tyminski**

*Real Estate Associate Broker*

(M): 315.243.4678

[ktyminski@suttoncos.com](mailto:ktyminski@suttoncos.com)

**SUTTON REAL ESTATE COMPANY**

525 Plum Street, Suite 100

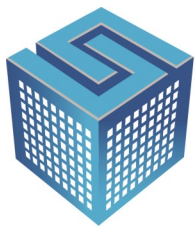
Syracuse, New York 13204

315.424.1111

[www.suttoncos.com](http://www.suttoncos.com)

*All information contained herein is from sources deemed reliable and is submitted subjected to errors, omissions, changes in price or other conditions, prior sale, leasing without notice. Principals should not rely solely upon the information contained herein.*





**SUTTON**  
REAL ESTATE COMPANY

**FOR SALE OR LEASE | RETAIL**

143 Midler Park Drive, Syracuse, NY 13206



**CONTACT EXCLUSIVE AGENTS:**

**Kenneth Tyminski**

*Real Estate Associate Broker*

(M): 315.243.4678

[ktyminski@suttoncos.com](mailto:ktyminski@suttoncos.com)

**SUTTON REAL ESTATE COMPANY**

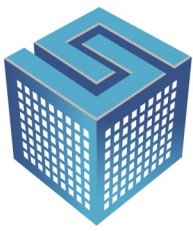
525 Plum Street, Suite 100

Syracuse, New York 13204

315.424.1111

[www.suttoncos.com](http://www.suttoncos.com)

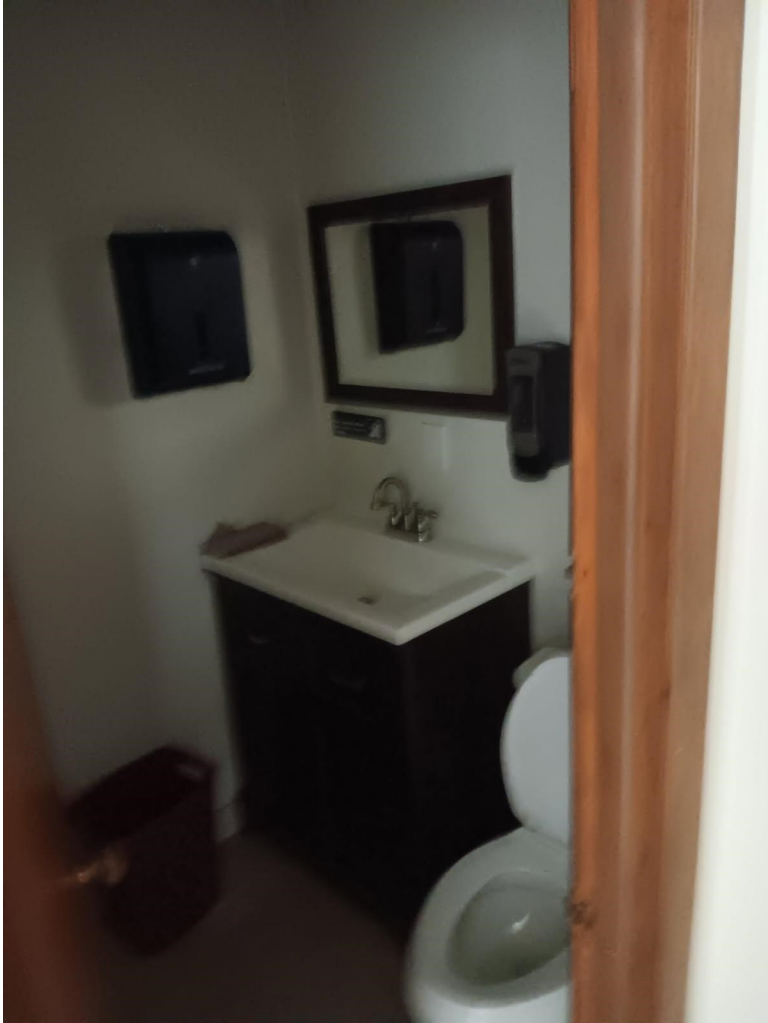
*All information contained herein is from sources deemed reliable and is submitted subjected to errors, omissions, changes in price or other conditions, prior sale, leasing without notice. Principals should not rely solely upon the information contained herein.*



**SUTTON**  
REAL ESTATE COMPANY

**FOR SALE OR LEASE | RETAIL**

143 Midler Park Drive, Syracuse, NY 13206



**CONTACT EXCLUSIVE AGENTS:**

**Kenneth Tyminski**

*Real Estate Associate Broker*

(M): 315.243.4678

[ktyminski@suttoncos.com](mailto:ktyminski@suttoncos.com)

**SUTTON REAL ESTATE COMPANY**

525 Plum Street, Suite 100

Syracuse, New York 13204

315.424.1111

[www.suttoncos.com](http://www.suttoncos.com)

*All information contained herein is from sources deemed reliable and is submitted subjected to errors, omissions, changes in price or other conditions, prior sale, leasing without notice. Principals should not rely solely upon the information contained herein.*