

SUTTON
REAL ESTATE COMPANY

FOR LEASE | OFFICE
THE MARKET PLACE

4500 Pewter lane, Manlius, NY 13104



PROPERTY FEATURES

- 2,200 SF Office
 - Reception Area, Kitchenette, Bathroom, Private Offices, Conference Rooms
 - Large Open Space and Basement Area for Storage
- Outside Entrances
- Tenant Mix- Medical and Professional
- Parking On-Site
- Restaurants, Retail and Banking within walking distance

CONTACT EXCLUSIVE AGENTS:

Barton K Feinberg

Senior Associate Broker

Mobile 315.447.8668

bfeinberg@suttoncos.com

SUTTON REAL ESTATE COMPANY

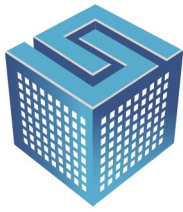
525 Plum Street, Suite 100

Syracuse, New York 13204

315.424.1111

www.suttoncos.com

All information contained herein is from sources deemed reliable and is submitted subjected to errors, omissions, changes in price or other conditions, prior sale, leasing without notice. Principals should not rely solely upon the information contained herein.



SUTTON
REAL ESTATE COMPANY

FOR LEASE | OFFICE
THE MARKET PLACE

4500 Pewter lane, Manlius, NY 13104



CONTACT EXCLUSIVE AGENTS:

Barton K Feinberg

Senior Associate Broker

Mobile 315.447.8668

bfeinberg@suttoncos.com

SUTTON REAL ESTATE COMPANY

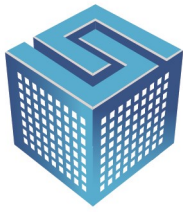
525 Plum Street, Suite 100

Syracuse, New York 13204

315.424.1111

www.suttoncos.com

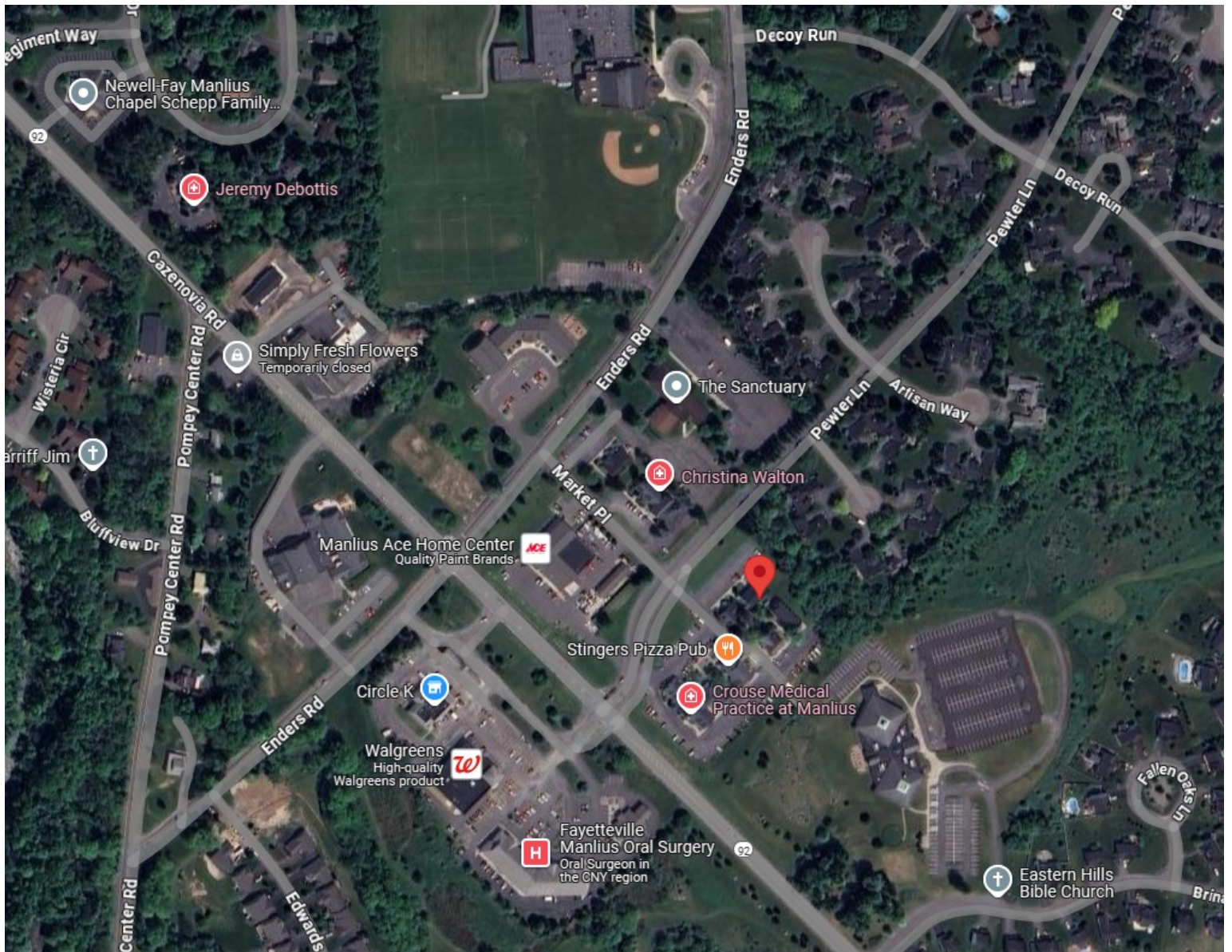
All information contained herein is from sources deemed reliable and is submitted subjected to errors, omissions, changes in price or other conditions, prior sale, leasing without notice. Principals should not rely solely upon the information contained herein.



SUTTON
REAL ESTATE COMPANY

FOR LEASE | OFFICE
THE MARKET PLACE

4500 Pewter lane, Manlius, NY 13104



CONTACT EXCLUSIVE AGENTS:

Barton K Feinberg

Senior Associate Broker

Mobile 315.447.8668

bfeinberg@suttoncos.com

SUTTON REAL ESTATE COMPANY

525 Plum Street, Suite 100

Syracuse, New York 13204

315.424.1111

www.suttoncos.com

All information contained herein is from sources deemed reliable and is submitted subjected to errors, omissions, changes in price or other conditions, prior sale, leasing without notice. Principals should not rely solely upon the information contained herein.