



**SUTTON**  
REAL ESTATE COMPANY

**FOR SALE | LAND**

3600 Griffin Rd., Syracuse, NY 13215



## PROPERTY FEATURES

- 3 Building Lots Available on Onondaga Hill
- Suburban, yet Country Setting
- Scenic Views of Lafayette Hills & Cherry Valley, with a Stream Bordering the Lots Behind
- Water, Gas, Electric & High Speed Internet Available
- Planned Subdivision Allows for Combining Lots

### CONTACT EXCLUSIVE AGENT:

**Stephen W. Saleski**

*Real Estate Associate Broker*

315.727.3103

[ssaleski@suttoncos.com](mailto:ssaleski@suttoncos.com)

### SUTTON REAL ESTATE COMPANY

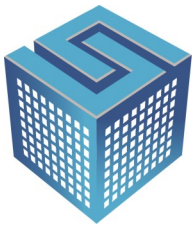
525 Plum Street, Suite 100

Syracuse, New York 13204

315.424.1111

[www.suttoncos.com](http://www.suttoncos.com)

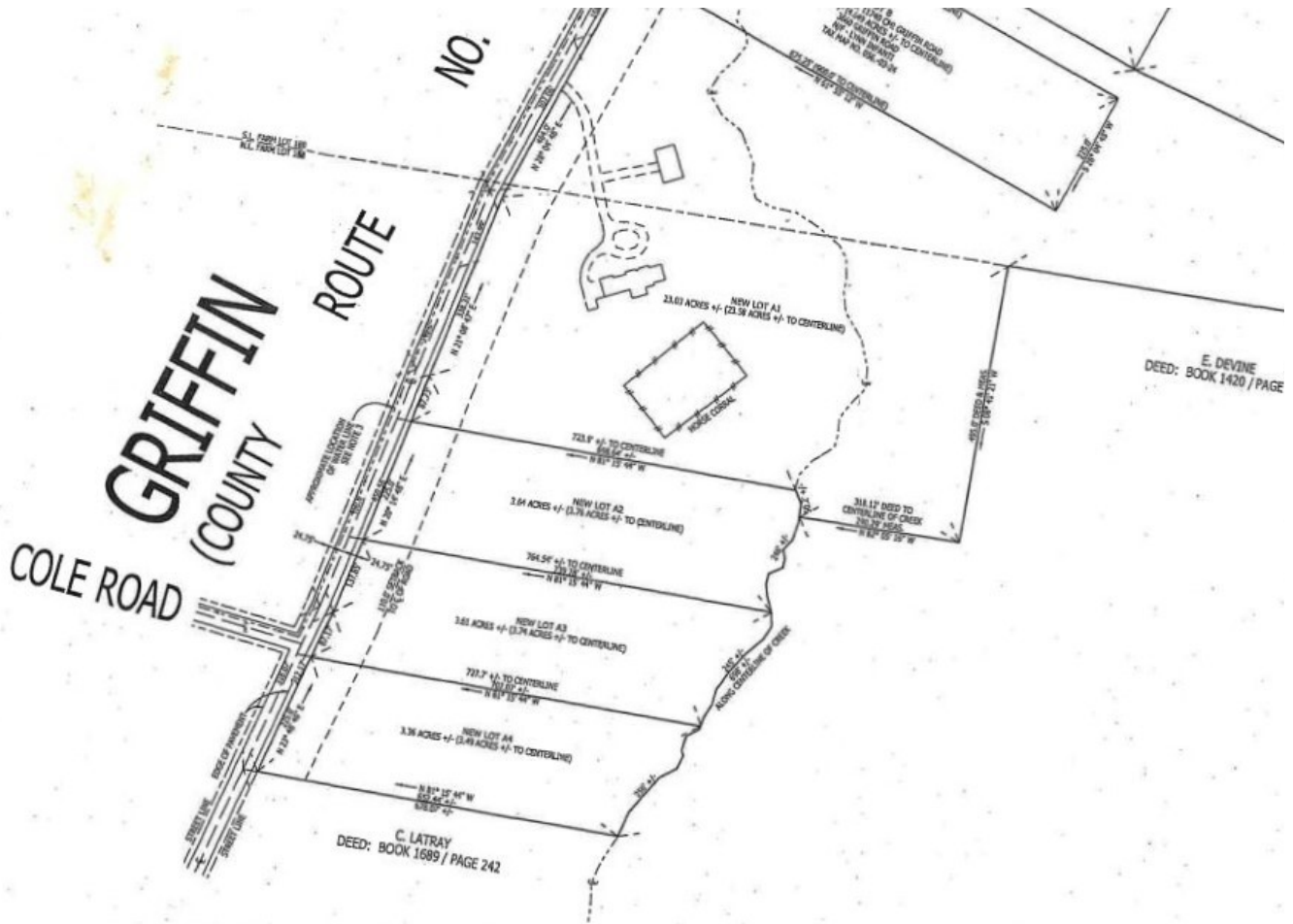
*All information contained herein is from sources deemed reliable and is submitted subjected to errors, omissions, changes in price or other conditions, prior sale, leasing without notice. Principals should not rely solely upon the information contained herein.*




**SUTTON**  
REAL ESTATE COMPANY

**FOR SALE | LAND**

3600 Griffin Rd., Syracuse, NY 13215



D TO	LOCATION SURVEY FOR: XX	
	LOT: XX	TRACT: XX
	TOWN OF XX	COUNTY OF ONONDAGA
STATE OF NEW YORK		
IS NOT SET IN THIS SURVEY UNLESS SHOWN. PROPERTY LINES MEASURED TO FOUNDATION WALLS UNLESS OTHERWISE		
I HEREBY CERTIFY THAT THIS IS A CORRECT MAP MADE FROM AN ACTUAL		
		
DUSSING LAND SURVEYING, LLC		
JAMES M. DUSSING SR. LIC. NO. 050692		
SYRACUSE, NEW YORK		
PHONE: 315-256-5372 FAX: 315-492-6892		
DATE: XX		
SCALE: 1" = 50'		
FILE NO.: 16-		
ND SURVEYOR NO. 050692		

**CONTACT EXCLUSIVE AGENT:**

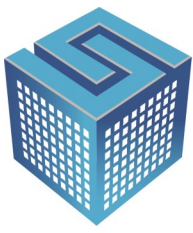
**Stephen W. Saleski**  
*Real Estate Associate Broker*  
  
315.727.3103  
[ssaleski@suttoncos.com](mailto:ssaleski@suttoncos.com)

**SUTTON REAL ESTATE COMPANY**

525 Plum Street, Suite 100  
Syracuse, New York 13204  
315.424.1111  
[www.suttoncos.com](http://www.suttoncos.com)

All information contained herein is from sources deemed reliable and is submitted subjected to errors, omissions, changes in price or other conditions, prior sale, leasing without notice. Principals should not rely solely upon the information contained herein.





**SUTTON**  
REAL ESTATE COMPANY

**FOR SALE | LAND**

3600 Griffin Rd., Syracuse, NY 13215



**CONTACT EXCLUSIVE AGENT:**

**Stephen W. Saleski**

*Real Estate Associate Broker*

315.727.3103

[ssaleski@suttoncos.com](mailto:ssaleski@suttoncos.com)

**SUTTON REAL ESTATE COMPANY**

525 Plum Street, Suite 100

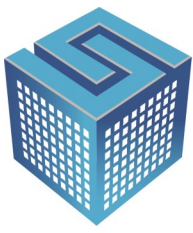
Syracuse, New York 13204

315.424.1111

[www.suttoncos.com](http://www.suttoncos.com)

*All information contained herein is from sources deemed reliable and is submitted subjected to errors, omissions, changes in price or other conditions, prior sale, leasing without notice. Principals should not rely solely upon the information contained herein.*





**SUTTON**  
REAL ESTATE COMPANY

**FOR SALE | LAND**

3600 Griffin Rd., Syracuse, NY 13215



**CONTACT EXCLUSIVE AGENT:**

**Stephen W. Saleski**

*Real Estate Associate Broker*

315.727.3103

[ssaleski@suttoncos.com](mailto:ssaleski@suttoncos.com)

**SUTTON REAL ESTATE COMPANY**

525 Plum Street, Suite 100

Syracuse, New York 13204

315.424.1111

[www.suttoncos.com](http://www.suttoncos.com)

*All information contained herein is from sources deemed reliable and is submitted subjected to errors, omissions, changes in price or other conditions, prior sale, leasing without notice. Principals should not rely solely upon the information contained herein.*

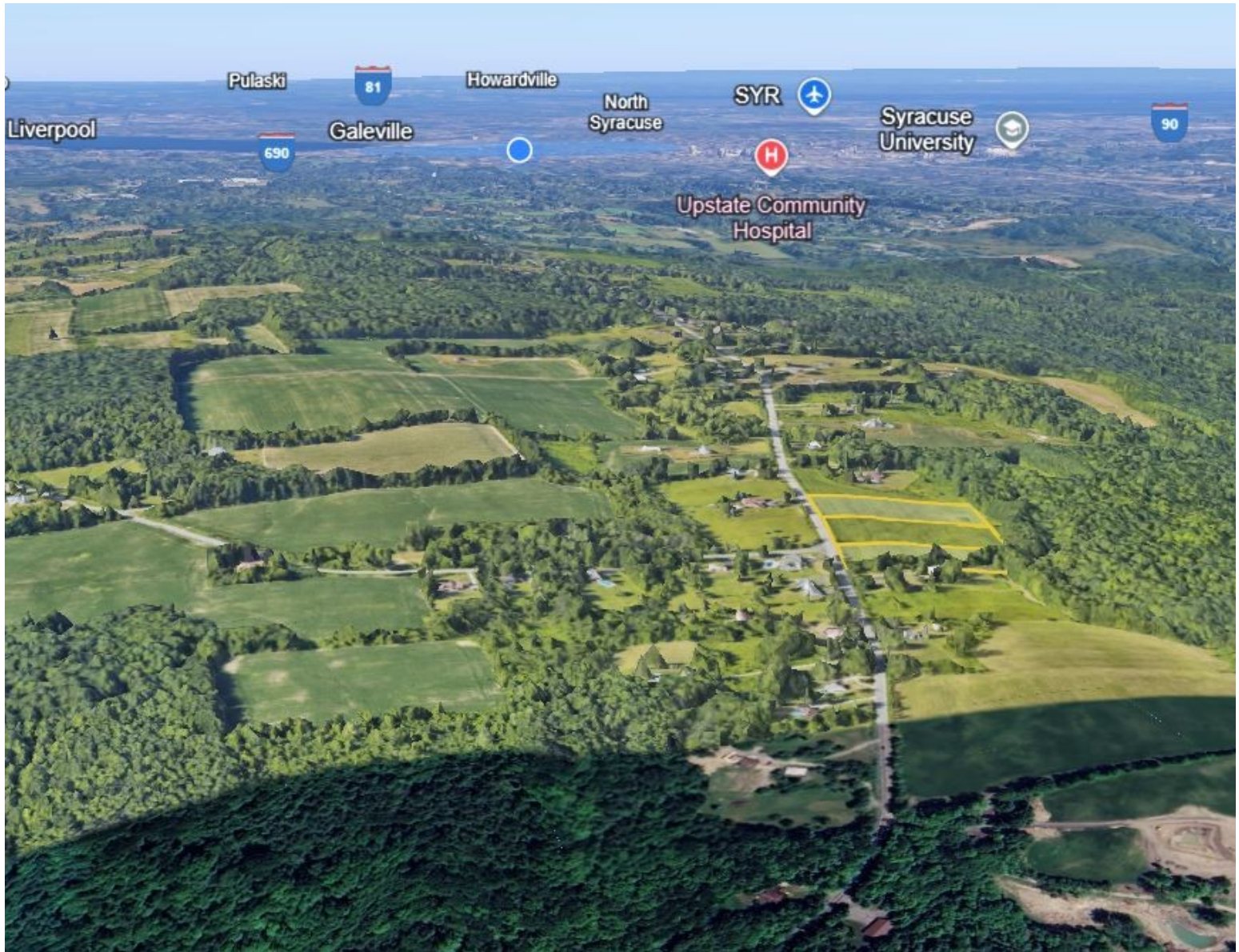




**SUTTON**  
REAL ESTATE COMPANY

**FOR SALE | LAND**

3600 Griffin Rd., Syracuse, NY 13215



**CONTACT EXCLUSIVE AGENT:**

**Stephen W. Saleski**

*Real Estate Associate Broker*

315.727.3103

[ssaleski@suttoncos.com](mailto:ssaleski@suttoncos.com)

**SUTTON REAL ESTATE COMPANY**

525 Plum Street, Suite 100

Syracuse, New York 13204

315.424.1111

[www.suttoncos.com](http://www.suttoncos.com)

*All information contained herein is from sources deemed reliable and is submitted subject to errors, omissions, changes in price or other conditions, prior sale, leasing without notice. Principals should not rely solely upon the information contained herein.*

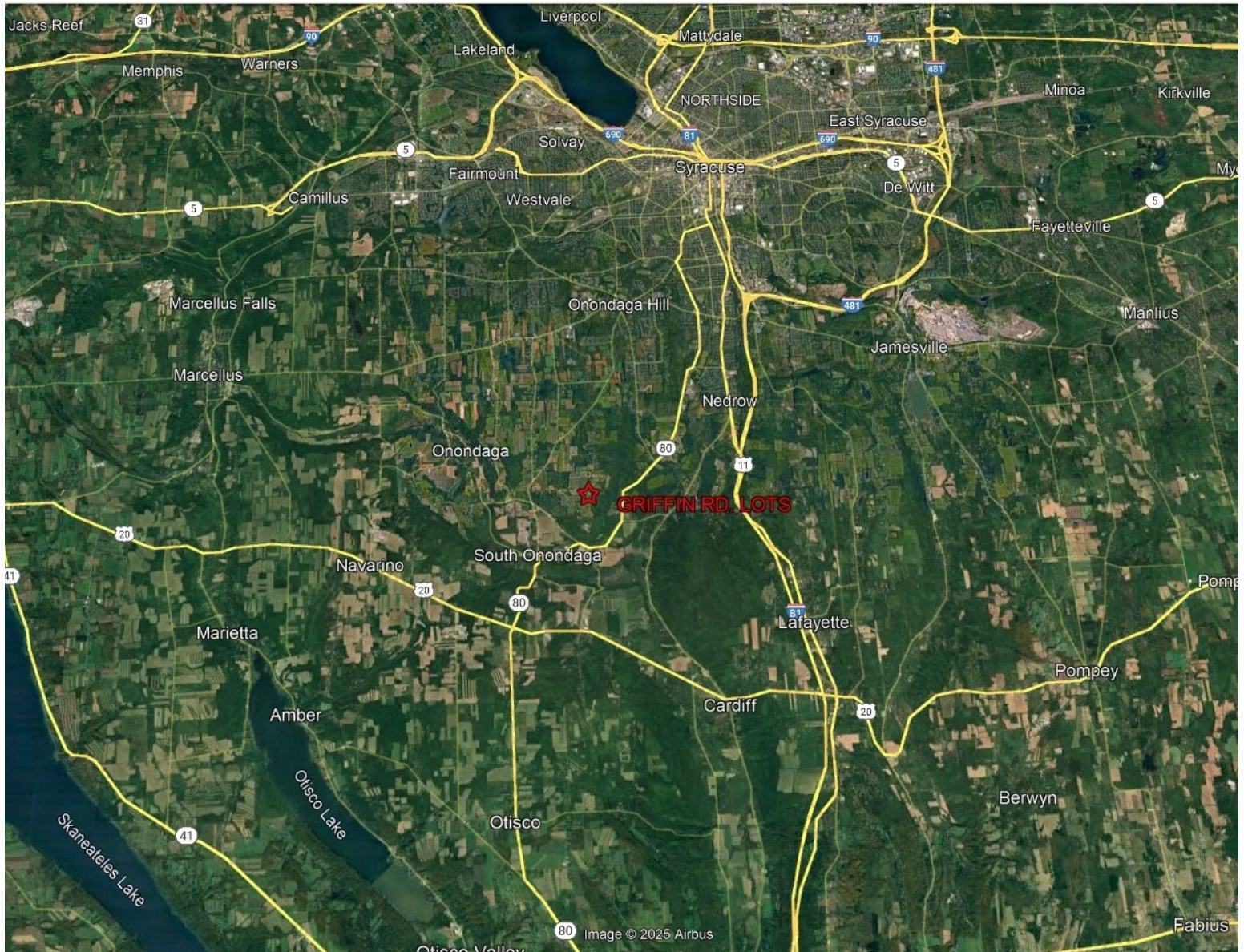




**SUTTON**  
REAL ESTATE COMPANY

**FOR SALE | LAND**

3600 Griffin Rd., Syracuse, NY 13215



**CONTACT EXCLUSIVE AGENT:**

**Stephen W. Saleski**

*Real Estate Associate Broker*

315.727.3103

[ssaleski@suttoncos.com](mailto:ssaleski@suttoncos.com)

**SUTTON REAL ESTATE COMPANY**

525 Plum Street, Suite 100

Syracuse, New York 13204

315.424.1111

[www.suttoncos.com](http://www.suttoncos.com)

*All information contained herein is from sources deemed reliable and is submitted subjected to errors, omissions, changes in price or other conditions, prior sale, leasing without notice. Principals should not rely solely upon the information contained herein.*