



**SUTTON**  
REAL ESTATE COMPANY

**FOR SALE | RETAIL**

**Turnkey Doggy Day Care Business and Real Estate**

1273 State Route 5, Elbridge, NY 13060



## PROPERTY FEATURES

- Established and Operating Turnkey Doggy Day Care Business and Real Estate
- Recently Expanded and Upgraded 4,600 SF Building on 1.84 Acres
- Great Visibility on St. Rt. 5 with 293' Road Frontage and 12,500 ADT
- Grooming Area Available for Lease and Other Income Opportunity Potential

### CONTACT EXCLUSIVE AGENT:

**Stephen W. Saleski**

*Real Estate Associate Broker*

(M): 315.727.3103

[ssaleski@suttoncos.com](mailto:ssaleski@suttoncos.com)

### SUTTON REAL ESTATE COMPANY

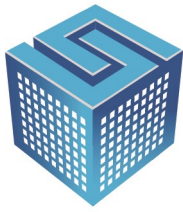
525 Plum Street, Suite 100

Syracuse, New York 13204

315.424.1111

[www.suttoncos.com](http://www.suttoncos.com)

*All information contained herein is from sources deemed reliable and is submitted subjected to errors, omissions, changes in price or other conditions, prior sale, leasing without notice. Principals should not rely solely upon the information contained herein.*



**SUTTON**  
REAL ESTATE COMPANY

**FOR SALE | RETAIL**

**Turnkey Doggy Day Care Business and Real Estate**

1273 State Route 5, Elbridge, NY 13060



**CONTACT EXCLUSIVE AGENT:**

**Stephen W. Saleski**

*Real Estate Associate Broker*

(M): 315.727.3103

[ssaleski@suttoncos.com](mailto:ssaleski@suttoncos.com)

**SUTTON REAL ESTATE COMPANY**

525 Plum Street, Suite 100

Syracuse, New York 13204

315.424.1111

[www.suttoncos.com](http://www.suttoncos.com)





**SUTTON**  
REAL ESTATE COMPANY

**FOR SALE | RETAIL**

**Turnkey Doggy Day Care Business and Real Estate**

1273 State Route 5, Elbridge, NY 13060



**CONTACT EXCLUSIVE AGENT:**

**Stephen W. Saleski**

*Real Estate Associate Broker*

(M): 315.727.3103

[ssaleski@suttoncos.com](mailto:ssaleski@suttoncos.com)

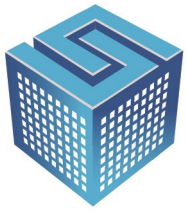
**SUTTON REAL ESTATE COMPANY**

525 Plum Street, Suite 100

Syracuse, New York 13204

315.424.1111

[www.suttoncos.com](http://www.suttoncos.com)



**SUTTON**  
REAL ESTATE COMPANY

**FOR SALE | RETAIL**

**Turnkey Doggy Day Care Business and Real Estate**

1273 State Route 5, Elbridge, NY 13060



**CONTACT EXCLUSIVE AGENT:**

**Stephen W. Saleski**

*Real Estate Associate Broker*

(M): 315.727.3103

[ssaleski@suttoncos.com](mailto:ssaleski@suttoncos.com)

**SUTTON REAL ESTATE COMPANY**

525 Plum Street, Suite 100

Syracuse, New York 13204

315.424.1111

[www.suttoncos.com](http://www.suttoncos.com)





**SUTTON**  
REAL ESTATE COMPANY

**FOR SALE | RETAIL**

**Turnkey Doggy Day Care Business and Real Estate**

1273 State Route 5, Elbridge, NY 13060



**CONTACT EXCLUSIVE AGENT:**

**Stephen W. Saleski**

*Real Estate Associate Broker*

(M): 315.727.3103

[ssaleski@suttoncos.com](mailto:ssaleski@suttoncos.com)

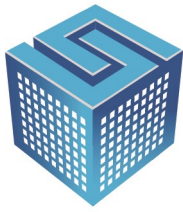
**SUTTON REAL ESTATE COMPANY**

525 Plum Street, Suite 100

Syracuse, New York 13204

315.424.1111

[www.suttoncos.com](http://www.suttoncos.com)



**SUTTON**  
REAL ESTATE COMPANY

**FOR SALE | RETAIL**

**Turnkey Doggy Day Care Business and Real Estate**

1273 State Route 5, Elbridge, NY 13060



**CONTACT EXCLUSIVE AGENT:**

**Stephen W. Saleski**

*Real Estate Associate Broker*

(M): 315.727.3103

[ssaleski@suttoncos.com](mailto:ssaleski@suttoncos.com)

**SUTTON REAL ESTATE COMPANY**

525 Plum Street, Suite 100

Syracuse, New York 13204

315.424.1111

[www.suttoncos.com](http://www.suttoncos.com)





**SUTTON**  
REAL ESTATE COMPANY

**FOR SALE | RETAIL**

**Turnkey Doggy Day Care Business and Real Estate**

1273 State Route 5, Elbridge, NY 13060



**CONTACT EXCLUSIVE AGENT:**

**Stephen W. Saleski**

*Real Estate Associate Broker*

(M): 315.727.3103

[ssaleski@suttoncos.com](mailto:ssaleski@suttoncos.com)

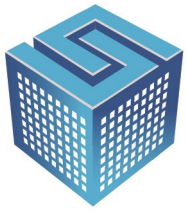
**SUTTON REAL ESTATE COMPANY**

525 Plum Street, Suite 100

Syracuse, New York 13204

315.424.1111

[www.suttoncos.com](http://www.suttoncos.com)



**SUTTON**  
REAL ESTATE COMPANY

**FOR SALE | RETAIL**

**Turnkey Doggy Day Care Business and Real Estate**

1273 State Route 5, Elbridge, NY 13060



**CONTACT EXCLUSIVE AGENT:**

**Stephen W. Saleski**

*Real Estate Associate Broker*

(M): 315.727.3103

[ssaleski@suttoncos.com](mailto:ssaleski@suttoncos.com)

**SUTTON REAL ESTATE COMPANY**

525 Plum Street, Suite 100

Syracuse, New York 13204

315.424.1111

[www.suttoncos.com](http://www.suttoncos.com)

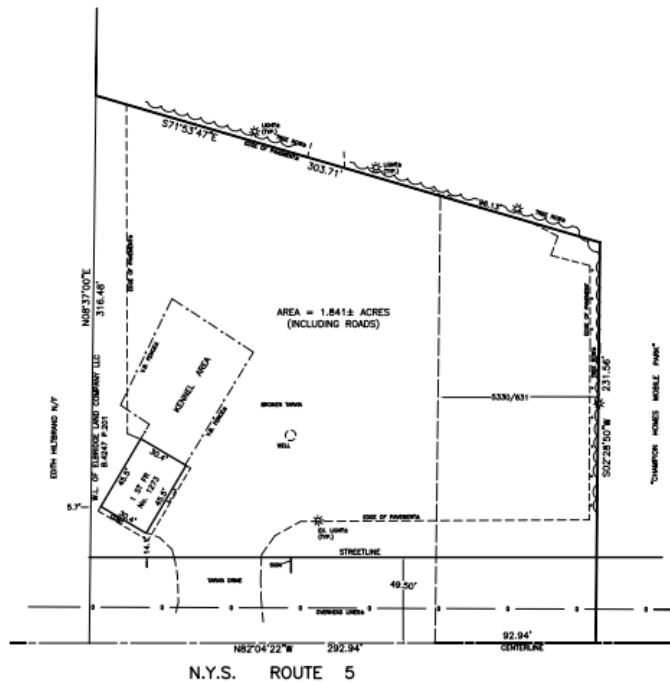




**SUTTON**  
REAL ESTATE COMPANY

**FOR SALE | RETAIL**  
**Turnkey Doggy Day Care Business and Real Estate**

1273 State Route 5, Elbridge, NY 13060



TOTAL AREA = 1.841± ACRES (INCLUDING ROADS)

"NO CHARGE" AFFIDAVIT ISSUED ON THIS MAP VOID THE CERTIFICATION, REVISED OR CORRECTED AND REPRESENT UNLAWFUL SURVEY PRACTICES.  
COPYRIGHT © 2013  
BY COTTRELL LAND SURVEYORS, P.C.  
ALL RIGHTS RESERVED.  
COPIES WITHOUT EMBOSSED SEAL  
ARE UNAUTHORIZED AND  
HAVE BEEN ALTERED.  
USER: THIS MAP IS NOT INTENDING FOR CERTIFICATION EXTENSIBLE  
FOR UNREGISTERED PURPOSES OR FOR SUBSEQUENT TRANSACTIONS  
EXCEPT BY THE WRITTEN CONSENT OF OR BY SURVEY UPDATE BY THE  
UNDERGROUND ONLY.

CERTIFIED EXCLUSIVELY TO:  
• MARY BAKER, ITS SUCCESSORS AND/OR ASSIGNS  
• WESTCOAST LAND TITLE INSURANCE COMPANY  
• BOYLE & ANDERSON, P.C.  
• PACE PLACE LLC  
FOR CONVEYANCE AND/OR MORTGAGE PURPOSES OCCURRING  
WITHIN ONE YEAR OF THE LATEST CERTIFICATION DATE ONLY.  
THE UNDERSIGNED CERTIFIES THAT  
THIS MAP WAS MADE FROM AN  
ACTUAL SURVEY ON 04-10-1998  
VOID WITHOUT SIGNATURE EMBOSSED SEAL.  
RECEIVED ON: JUNE 5, 2017

SURVEYORS: REFERENCE TO, USE OF OR RELIANCE ON THIS MAP  
WITHOUT WRITTEN CONSENT FOR WHATEVER PURPOSES VIOLATES MY  
COPYRIGHT AND INVOLVES ME OF ANY LIABILITY FOR LATEST CHANGES  
AND ERRORS AND OF ANY RESPONSIBILITY FOR RESULTANT DAMAGES.

40 0 40 80 120  
GRAPHIC SCALE - FEET

ROUTE 5 11273 61873 (HANK) [R.37-1-21 B.385] 01998041080Y 020170605UP

No. 1273 N.Y.S. ROUTE 5

**PART OF LOT 73 - TOWN OF ELBRIDGE  
ONONDAGA COUNTY, N. Y.**

L.D: 37-01-24	FILE: ROLL 37-1-21 BIN 285
DATE: 10-04-2013	SCALE: 1" = 40' B/P:
REVISIONS	

COTTRELL LAND SURVEYORS, P.C.  
7308 JAMESVILLE ROAD  
MANLIUS, N.Y. 13104 PHONE (315) 682-8121

## CONTACT EXCLUSIVE AGENT:

**Stephen W. Saleski**  
*Real Estate Associate Broker*

(M): 315.727.3103  
[ssaleski@suttoncos.com](mailto:ssaleski@suttoncos.com)

## SUTTON REAL ESTATE COMPANY

525 Plum Street, Suite 100  
Syracuse, New York 13204  
315.424.1111  
[www.suttoncos.com](http://www.suttoncos.com)