



## PROPERTY FEATURES

- Approx. 3100 SF outstanding office space!
- High visibility freestanding building with plenty of parking
- 10-11 offices, 2 conference rooms
- Brand new roof mechanicals and fixtures
- Owner will finish build out to suit tenants needs including tenants choice of flooring.
- Asking rent is \$20psf plus utilities.

### CONTACT EXCLUSIVE AGENTS:

**Kenneth Tyminski**

*Real Estate Associate Broker*

(M): 315.243.4678

[ktyminski@suttoncos.com](mailto:ktyminski@suttoncos.com)

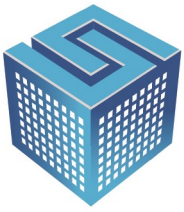
### SUTTON REAL ESTATE COMPANY

525 Plum Street, Suite 100

Syracuse, New York 13204

315.424.1111

[www.suttoncos.com](http://www.suttoncos.com)



**SUTTON**  
REAL ESTATE COMPANY

**FOR LEASE | OFFICE**

307 Kasson Road, Camillus, New York 13031



**CONTACT EXCLUSIVE AGENTS:**

**Kenneth Tyminski**

*Real Estate Associate Broker*

(M): 315.243.4678

[ktyminski@suttoncos.com](mailto:ktyminski@suttoncos.com)

**SUTTON REAL ESTATE COMPANY**

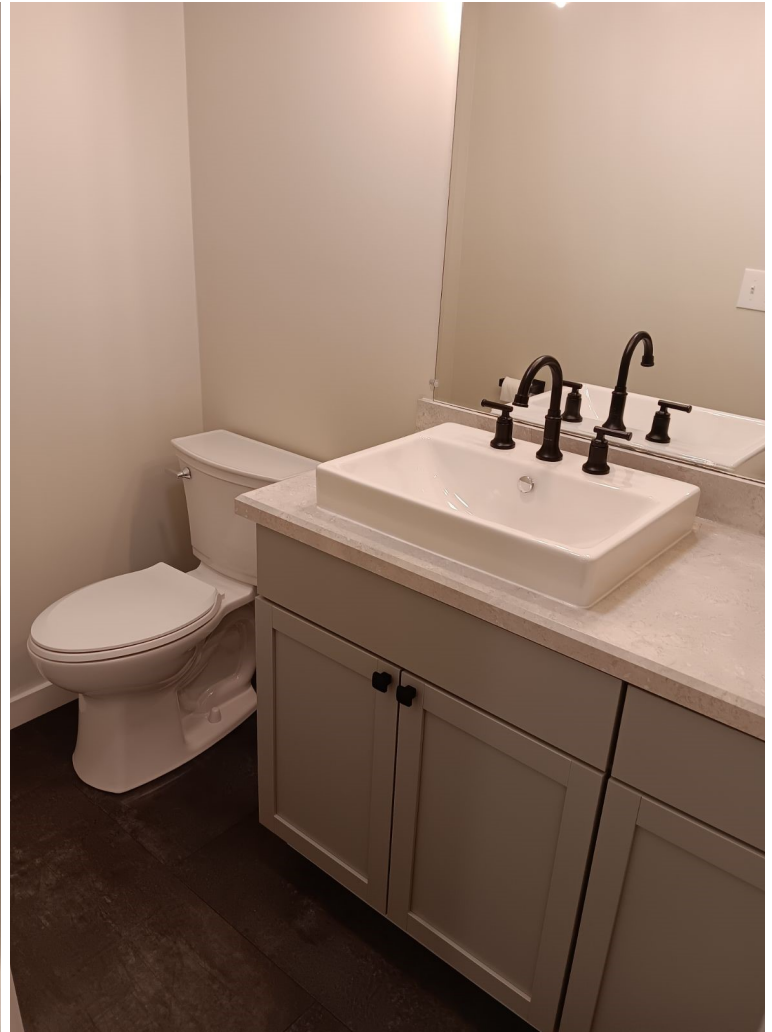
525 Plum Street, Suite 100

Syracuse, New York 13204

315.424.1111

[www.suttoncos.com](http://www.suttoncos.com)

*All information contained herein is from sources deemed reliable and is submitted subjected to errors, omissions, changes in price or other conditions, prior sale, leasing without notice. Principals should not rely solely upon the information contained herein.*



**CONTACT EXCLUSIVE AGENTS:**

**Kenneth Tyminski**

*Real Estate Associate Broker*

(M): 315.243.4678

[ktyminski@suttoncos.com](mailto:ktyminski@suttoncos.com)

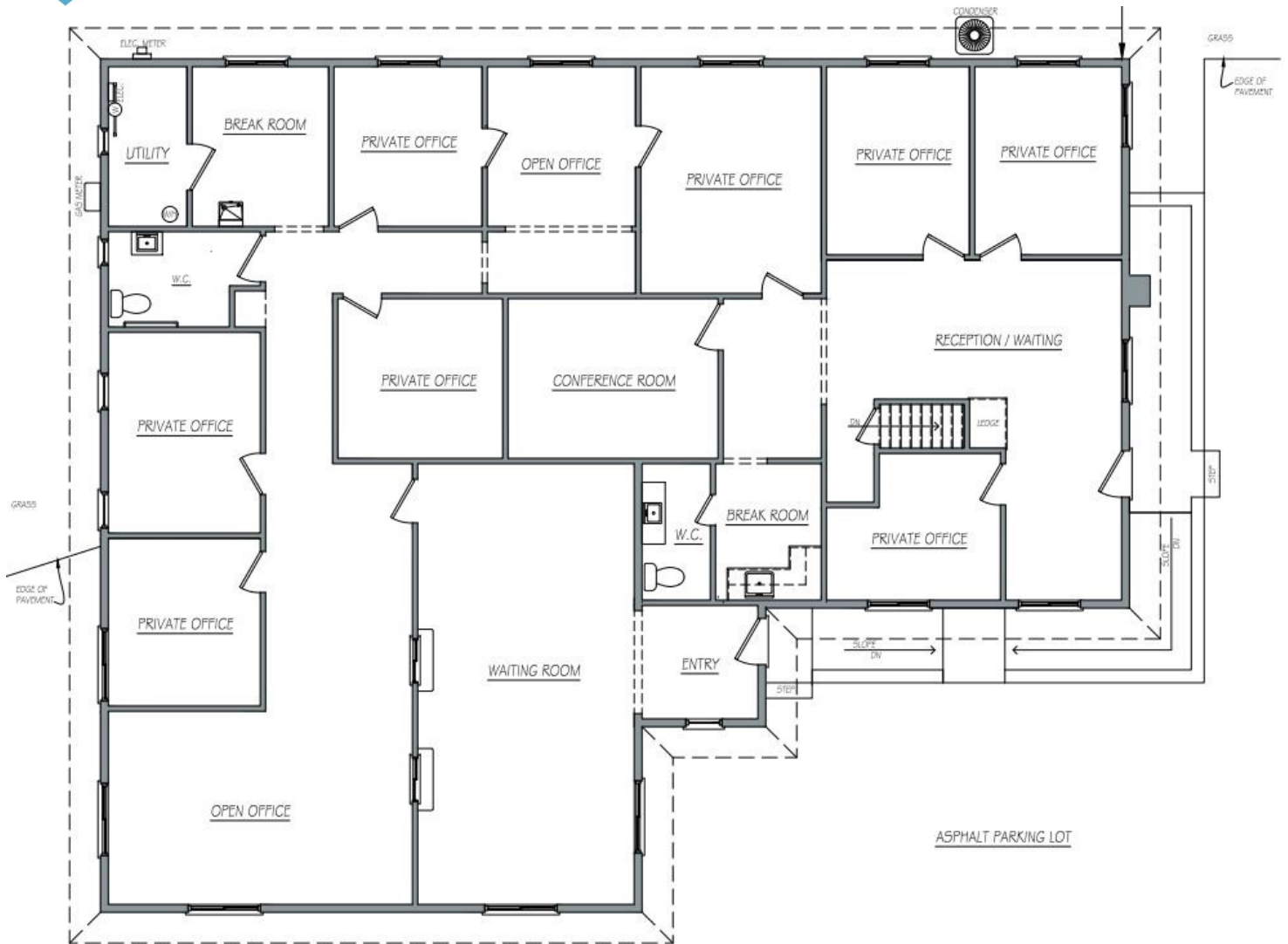
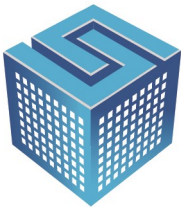
**SUTTON REAL ESTATE COMPANY**

525 Plum Street, Suite 100

Syracuse, New York 13204

315.424.1111

[www.suttoncos.com](http://www.suttoncos.com)



1ST FLOOR	3,110 SF
BASEMENT	886 SF
TOTAL:	3,996 SF

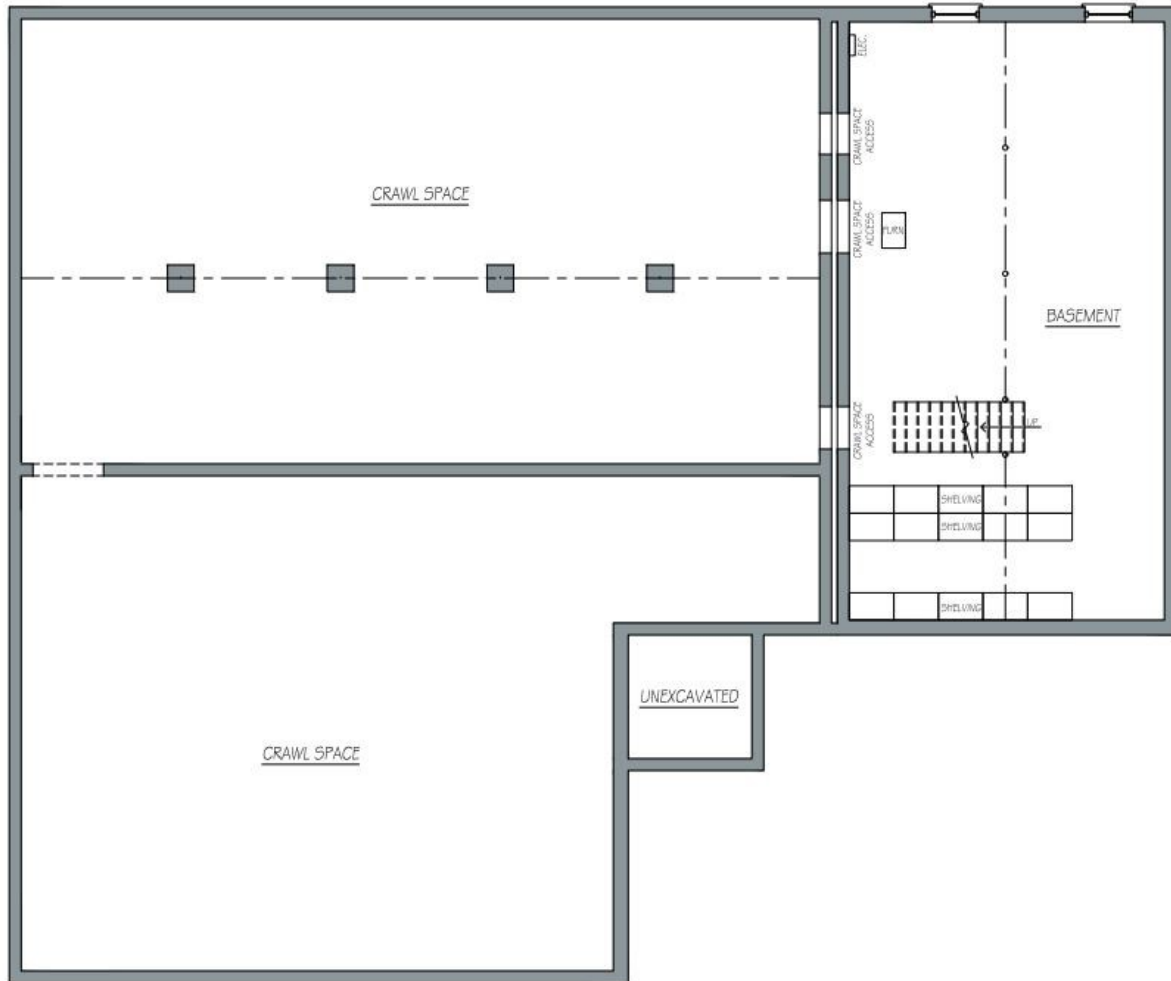
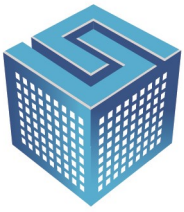
2 EXISTING FLOOR PLAN  
EX1 1/4" = 1'-0"

**CONTACT EXCLUSIVE AGENTS:**

**Kenneth Tyminski**  
Real Estate Associate Broker  
(M): 315.243.4678  
[ktyminski@suttoncos.com](mailto:ktyminski@suttoncos.com)

**SUTTON REAL ESTATE COMPANY**

525 Plum Street, Suite 100  
Syracuse, New York 13204  
315.424.1111  
[www.suttoncos.com](http://www.suttoncos.com)



1ST FLOOR	3,110 SF
BASEMENT	886 SF
<b>TOTAL:</b>	<b>3,996 SF</b>

2 EXISTING BASEMENT PLAN  
EXD 1/4"=1'-0"

**CONTACT EXCLUSIVE AGENTS:**

**Kenneth Tyminski**  
Real Estate Associate Broker  
  
(M): 315.243.4678  
[ktyminski@suttoncos.com](mailto:ktyminski@suttoncos.com)

**SUTTON REAL ESTATE COMPANY**

525 Plum Street, Suite 100  
Syracuse, New York 13204  
315.424.1111  
[www.suttoncos.com](http://www.suttoncos.com)