

SUTTON
REAL ESTATE COMPANY

FOR LEASE | OFFICE

307 Kasson Road, Camillus, New York 13031



PROPERTY FEATURES

- Approx. 3100 SF outstanding office space!
- High visibility freestanding building with plenty of parking
- 10-11 offices, 2 conference rooms
- Brand new roof mechanicals and fixtures
- Owner will finish build out to suit tenants needs including tenants choice of flooring.
- Asking rent is \$20psf plus utilities.

CONTACT EXCLUSIVE AGENTS:

Kenneth Tyminski

Real Estate Associate Broker

(M): 315.243.4678

ktyminski@suttoncos.com

SUTTON REAL ESTATE COMPANY

525 Plum Street, Suite 100

Syracuse, New York 13204

315.424.1111

www.suttoncos.com

All information contained herein is from sources deemed reliable and is submitted subjected to errors, omissions, changes in price or other conditions, prior sale, leasing without notice. Principals should not rely solely upon the information contained herein.



FOR LEASE | OFFICE

307 Kasson Road, Camillus, New York 13031



CONTACT EXCLUSIVE AGENTS:

Kenneth Tyminski

Real Estate Associate Broker

(M): 315.243.4678

ktyminski@suttoncos.com

SUTTON REAL ESTATE COMPANY

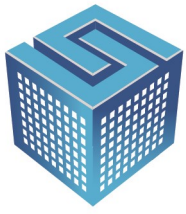
525 Plum Street, Suite 100

Syracuse, New York 13204

315.424.1111

www.suttoncos.com

All information contained herein is from sources deemed reliable and is submitted subjected to errors, omissions, changes in price or other conditions, prior sale, leasing without notice. Principals should not rely solely upon the information contained herein.



SUTTON
REAL ESTATE COMPANY

FOR LEASE | OFFICE

307 Kasson Road, Camillus, New York 13031



CONTACT EXCLUSIVE AGENTS:

Kenneth Tyminski

Real Estate Associate Broker

(M): 315.243.4678

ktyminski@suttoncos.com

SUTTON REAL ESTATE COMPANY

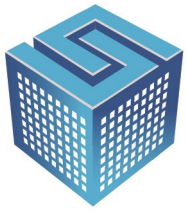
525 Plum Street, Suite 100

Syracuse, New York 13204

315.424.1111

www.suttoncos.com

All information contained herein is from sources deemed reliable and is submitted subjected to errors, omissions, changes in price or other conditions, prior sale, leasing without notice. Principals should not rely solely upon the information contained herein.



SUTTON
REAL ESTATE COMPANY

FOR LEASE | OFFICE

307 Kasson Road, Camillus, New York 13031



CONTACT EXCLUSIVE AGENTS:

Kenneth Tyminski

Real Estate Associate Broker

(M): 315.243.4678

ktyminski@suttoncos.com

SUTTON REAL ESTATE COMPANY

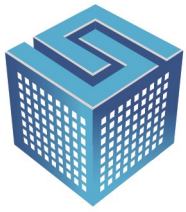
525 Plum Street, Suite 100

Syracuse, New York 13204

315.424.1111

www.suttoncos.com

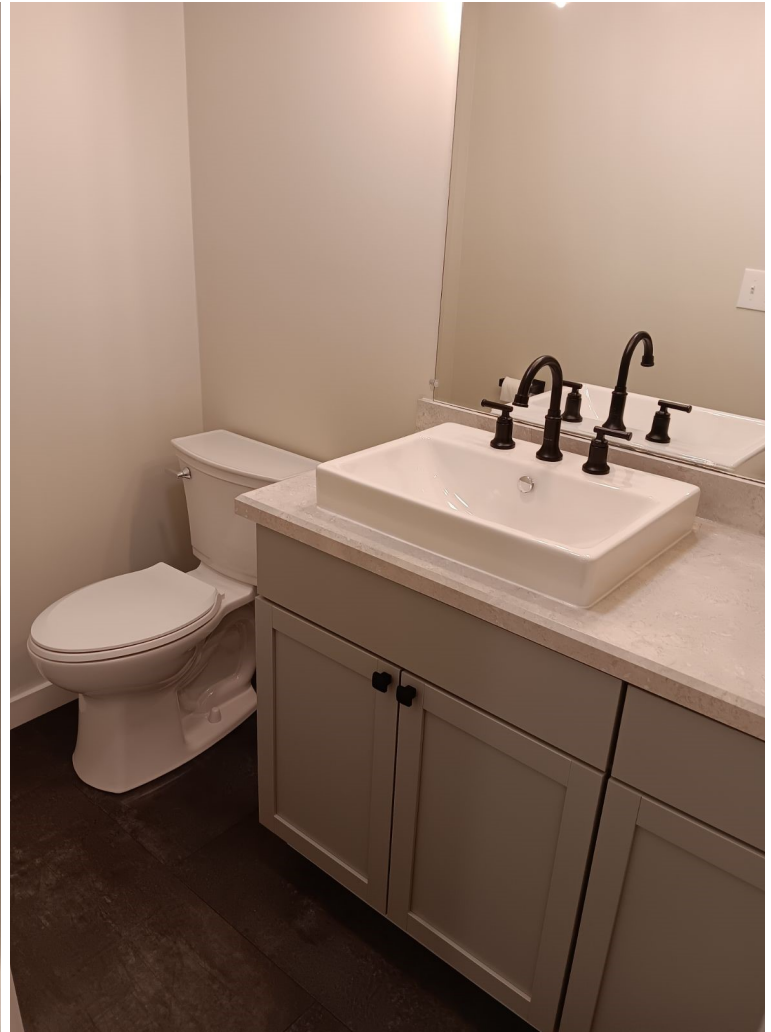
All information contained herein is from sources deemed reliable and is submitted subjected to errors, omissions, changes in price or other conditions, prior sale, leasing without notice. Principals should not rely solely upon the information contained herein.



SUTTON
REAL ESTATE COMPANY

FOR LEASE | OFFICE

307 Kasson Road, Camillus, New York 13031



CONTACT EXCLUSIVE AGENTS:

Kenneth Tyminski

Real Estate Associate Broker

(M): 315.243.4678

ktyminski@suttoncos.com

SUTTON REAL ESTATE COMPANY

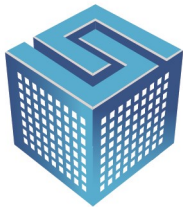
525 Plum Street, Suite 100

Syracuse, New York 13204

315.424.1111

www.suttoncos.com

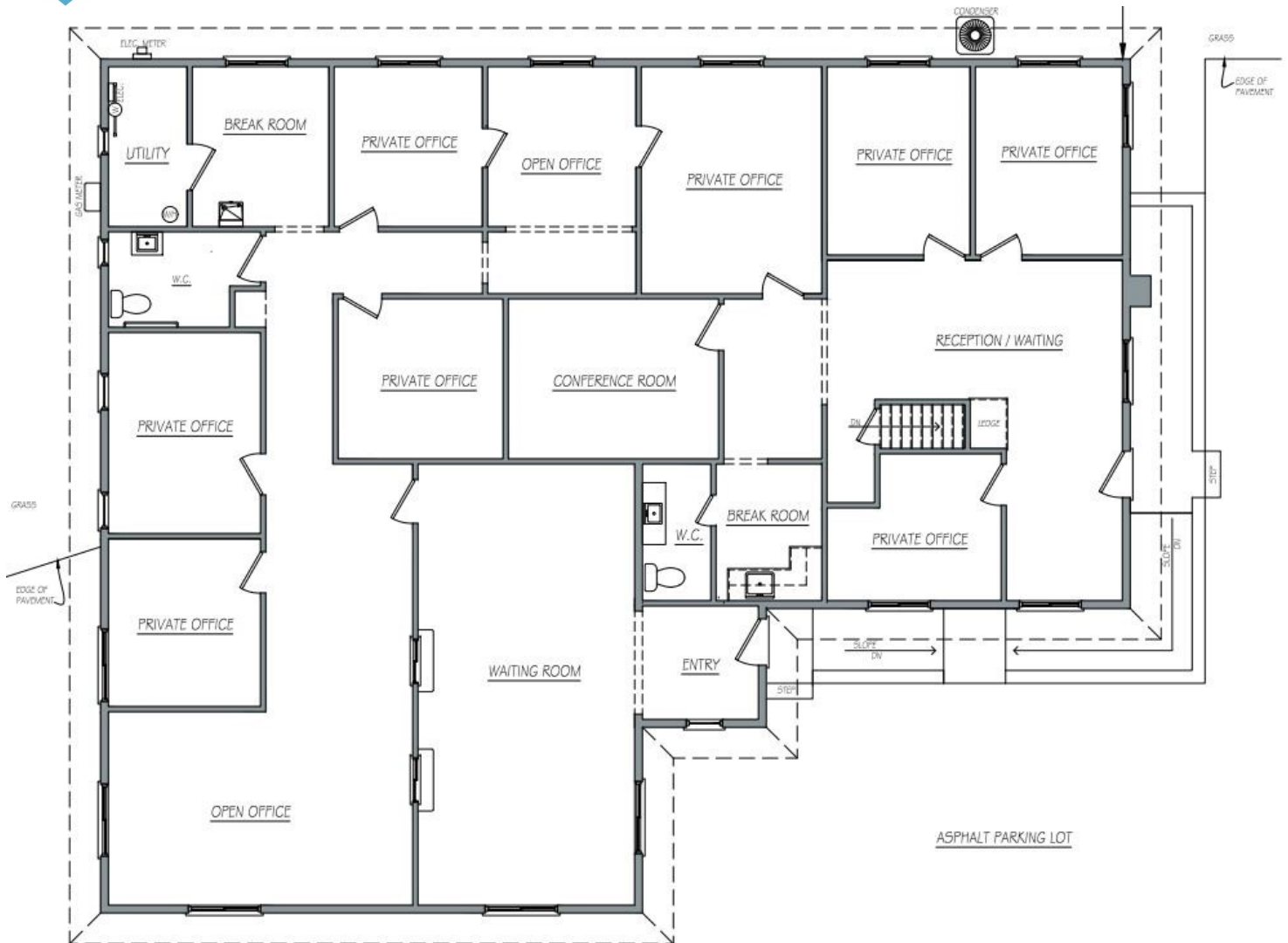
All information contained herein is from sources deemed reliable and is submitted subjected to errors, omissions, changes in price or other conditions, prior sale, leasing without notice. Principals should not rely solely upon the information contained herein.



SUTTON
REAL ESTATE COMPANY

FOR LEASE | OFFICE

307 Kasson Road, Camillus, New York 13031



GRAPHIC SCALE
0' 2' 6' 12'

1ST FLOOR 3,110 SF
BASEMENT 886 SF
TOTAL 3,996 SF

2 EXISTING FLOOR PLAN
EX1 1/4" = 1'-0"

CONTACT EXCLUSIVE AGENTS:

Kenneth Tyminski

Real Estate Associate Broker

(M): 315.243.4678

ktyminski@suttoncos.com

SUTTON REAL ESTATE COMPANY

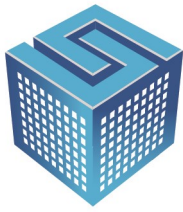
525 Plum Street, Suite 100

Syracuse, New York 13204

315.424.1111

www.suttoncos.com

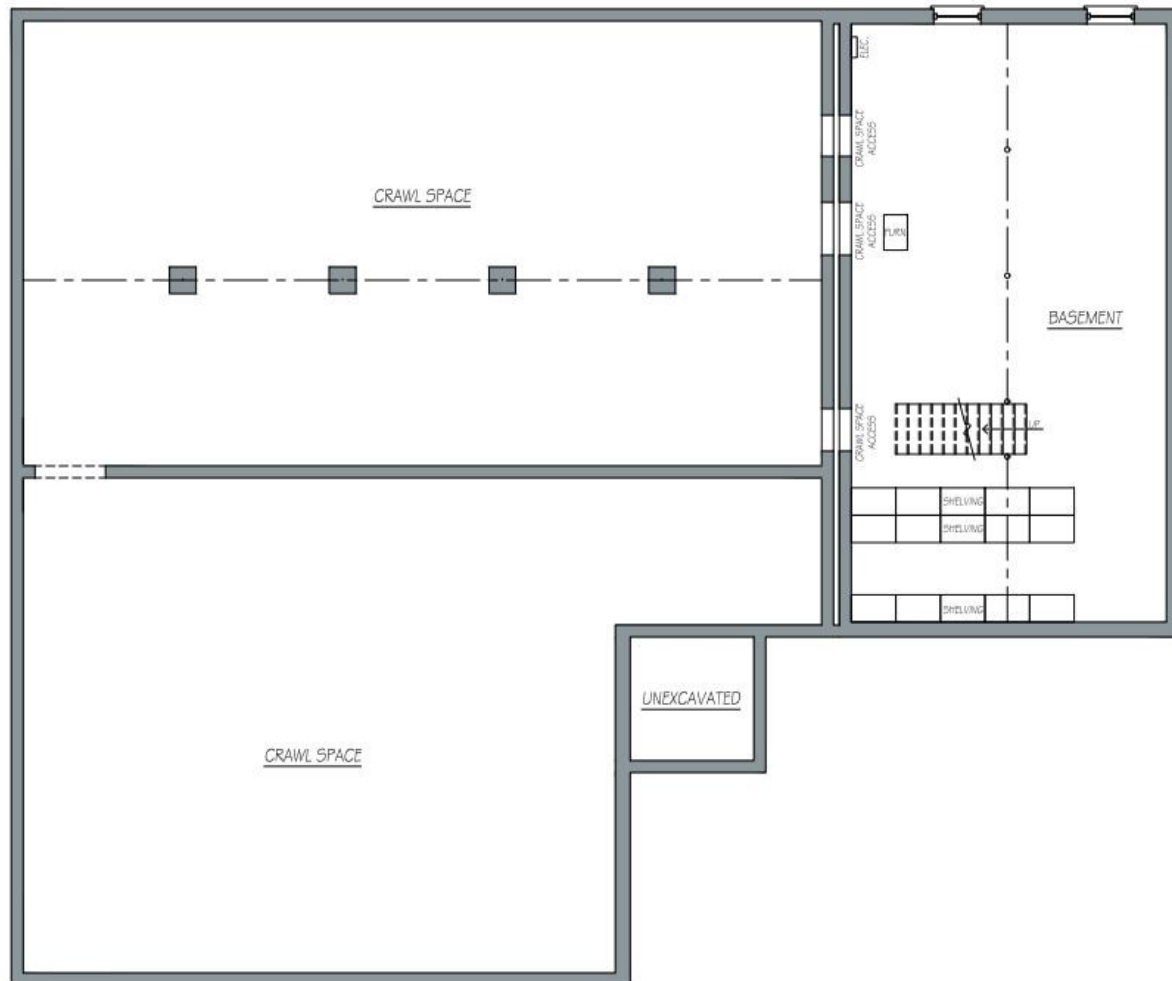
All information contained herein is from sources deemed reliable and is submitted subjected to errors, omissions, changes in price or other conditions, prior sale, leasing without notice. Principals should not rely solely upon the information contained herein.



SUTTON
REAL ESTATE COMPANY

FOR LEASE | OFFICE

307 Kasson Road, Camillus, New York 13031



1ST FLOOR	3,110 SF
BASEMENT	886 SF
TOTAL:	3,996 SF

2 EXISTING BASEMENT PLAN
EXD 1/4" = 1'-0"

CONTACT EXCLUSIVE AGENTS:

Kenneth Tyminski

Real Estate Associate Broker

(M): 315.243.4678

ktyminski@suttoncos.com

SUTTON REAL ESTATE COMPANY

525 Plum Street, Suite 100

Syracuse, New York 13204

315.424.1111

www.suttoncos.com

All information contained herein is from sources deemed reliable and is submitted subjected to errors, omissions, changes in price or other conditions, prior sale, leasing without notice. Principals should not rely solely upon the information contained herein.