



## PROPERTY FEATURES

- 14,476 SF Building on Approximately 1 Acre
- 11,900 SF Clean Warehouse with 14 1/2 Foot Clearance
- 1- 10'x 10' Overhead Door with Dock and Ramp for Drive In
- Wet Sprinkler System
- Minutes from Rt 81 & Rt 11
- 3 Phase Power 240 Volt – 300 AMP
- 2,576 SF of Office Space
  - 5- Private Offices
  - Large Open Area
  - Conference Room
  - Kitchenette

### CONTACT EXCLUSIVE AGENTS:

**Bart Feinberg**

Senior Associate Broker

(M): 315.447.8668

[bfeinberg@suttoncos.com](mailto:bfeinberg@suttoncos.com)

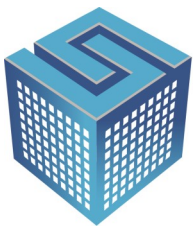
### SUTTON REAL ESTATE COMPANY

525 Plum Street, Suite 100

Syracuse, New York 13204

315.424.1111

[www.suttoncos.com](http://www.suttoncos.com)



**SUTTON**  
REAL ESTATE COMPANY

**FOR SALE OR LEASE | FLEX**

110 Robinson St., Binghamton, NY 13904



**CONTACT EXCLUSIVE AGENTS:**

**Bart Feinberg**

*Senior Associate Broker*

(M): 315.447.8668

[bfeinberg@suttoncos.com](mailto:bfeinberg@suttoncos.com)

**SUTTON REAL ESTATE COMPANY**

525 Plum Street, Suite 100

Syracuse, New York 13204

315.424.1111

[www.suttoncos.com](http://www.suttoncos.com)

*All information contained herein is from sources deemed reliable and is submitted subjected to errors, omissions, changes in price or other conditions, prior sale, leasing without notice. Principals should not rely solely upon the information contained herein.*



**CONTACT EXCLUSIVE AGENTS:**

**Bart Feinberg**

*Senior Associate Broker*

(M): 315.447.8668

[bfeinberg@suttoncos.com](mailto:bfeinberg@suttoncos.com)

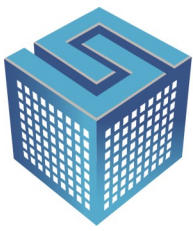
**SUTTON REAL ESTATE COMPANY**

525 Plum Street, Suite 100

Syracuse, New York 13204

315.424.1111

[www.suttoncos.com](http://www.suttoncos.com)



**SUTTON**  
REAL ESTATE COMPANY

**FOR SALE OR LEASE | FLEX**

110 Robinson St., Binghamton, NY 13904



**CONTACT EXCLUSIVE AGENTS:**

**Bart Feinberg**

*Senior Associate Broker*

(M): 315.447.8668

[bfeinberg@suttoncos.com](mailto:bfeinberg@suttoncos.com)

**SUTTON REAL ESTATE COMPANY**

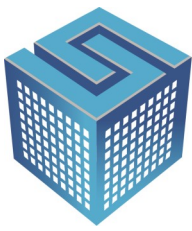
525 Plum Street, Suite 100

Syracuse, New York 13204

315.424.1111

[www.suttoncos.com](http://www.suttoncos.com)

*All information contained herein is from sources deemed reliable and is submitted subjected to errors, omissions, changes in price or other conditions, prior sale, leasing without notice. Principals should not rely solely upon the information contained herein.*



**SUTTON**  
REAL ESTATE COMPANY

**FOR SALE OR LEASE | FLEX**

110 Robinson St., Binghamton, NY 13904



**CONTACT EXCLUSIVE AGENTS:**

**Bart Feinberg**

*Senior Associate Broker*

(M): 315.447.8668

[bfeinberg@suttoncos.com](mailto:bfeinberg@suttoncos.com)

**SUTTON REAL ESTATE COMPANY**

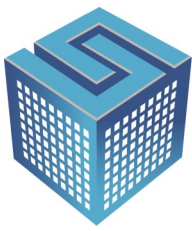
525 Plum Street, Suite 100

Syracuse, New York 13204

315.424.1111

[www.suttoncos.com](http://www.suttoncos.com)

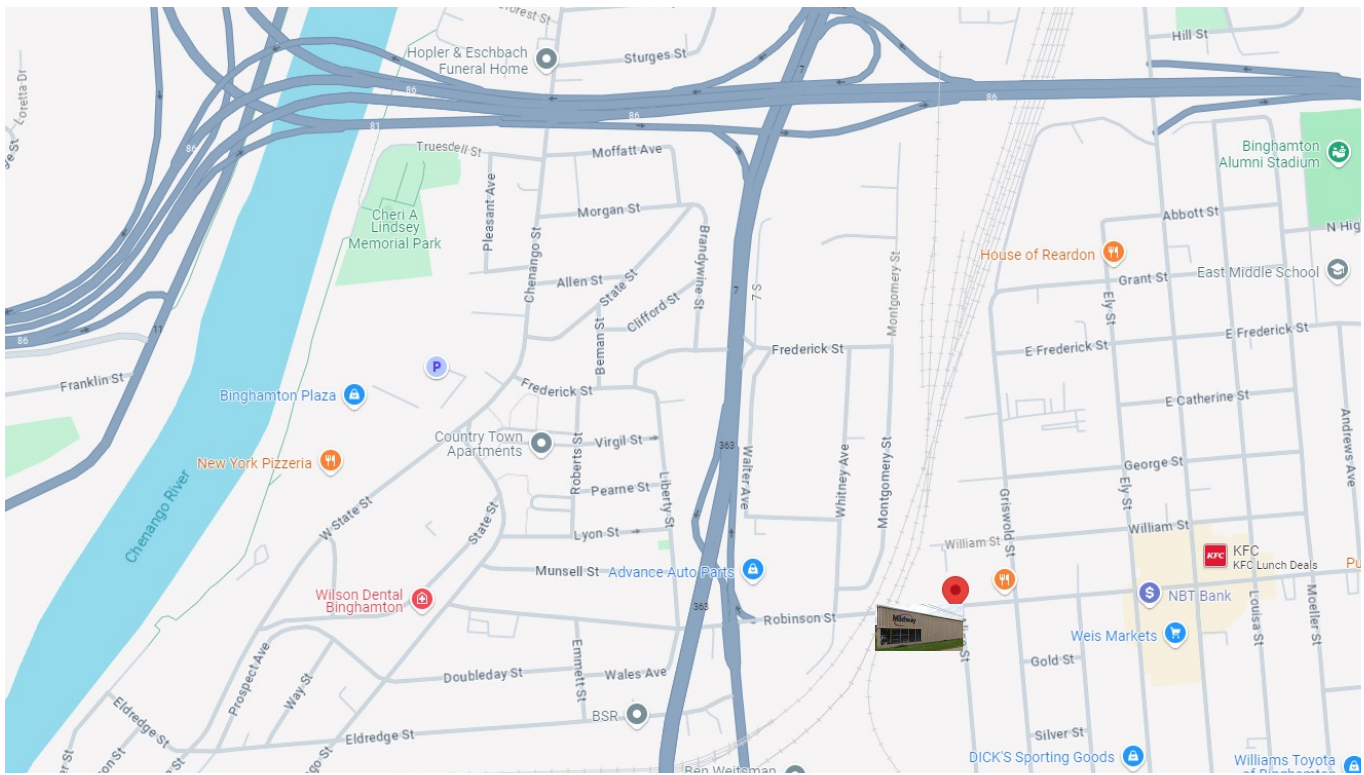
*All information contained herein is from sources deemed reliable and is submitted subjected to errors, omissions, changes in price or other conditions, prior sale, leasing without notice. Principals should not rely solely upon the information contained herein.*



**SUTTON**  
REAL ESTATE COMPANY

**FOR SALE OR LEASE | FLEX**

110 Robinson St., Binghamton, NY 13904



**CONTACT EXCLUSIVE AGENTS:**

**Bart Feinberg**

Senior Associate Broker

(M): 315.447.8668

[bfeinberg@suttoncos.com](mailto:bfeinberg@suttoncos.com)

**SUTTON REAL ESTATE COMPANY**

525 Plum Street, Suite 100

Syracuse, New York 13204

315.424.1111

[www.suttoncos.com](http://www.suttoncos.com)

All information contained herein is from sources deemed reliable and is submitted subjected to errors, omissions, changes in price or other conditions, prior sale, leasing without notice. Principals should not rely solely upon the information contained herein.