

**SUTTON**  
REAL ESTATE COMPANY

**FOR LEASE | OFFICE**  
**SHERWOOD OFFICE PARK**

6702 Buckley Road Suite 140, Syracuse, NY 13212



## PROPERTY FEATURES

- Class B+ Office Space 3,150 SF Suite 140
- 6 Private Offices with Windows
- 1 Large Conference Room (Seat 10-12)
- Kitchenette/Breakroom
- Bull pen area (700 SF)
- Secured File Storage
- Reception area
- Easy access to NYS Thruway and Interstate 81
- Minutes to Downtown and Syracuse Airport
- Signage on Buckley Road

### CONTACT EXCLUSIVE AGENTS:

**Barton K. Feinberg**

*Senior Associate Broker*

315.447.8668

[bfeinberg@suttoncos.com](mailto:bfeinberg@suttoncos.com)

### SUTTON REAL ESTATE COMPANY

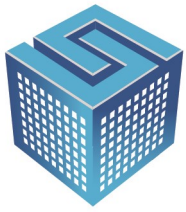
525 Plum Street, Suite 100

Syracuse, New York 13204

315.424.1111

[www.suttoncos.com](http://www.suttoncos.com)

*All information contained herein is from sources deemed reliable and is submitted subjected to errors, omissions, changes in price or other conditions, prior sale, leasing without notice. Principals should not rely solely upon the information contained herein.*



**SUTTON**  
REAL ESTATE COMPANY

**FOR LEASE | OFFICE**  
**SHERWOOD OFFICE PARK**

6702 Buckley Road Suite 140, Syracuse, NY 13212



**CONTACT EXCLUSIVE AGENTS:**

**Barton K. Feinberg**

*Senior Associate Broker*

315.447.8668

[bfeinberg@suttoncos.com](mailto:bfeinberg@suttoncos.com)

**SUTTON REAL ESTATE COMPANY**

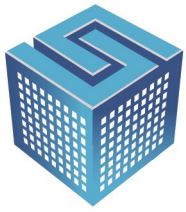
525 Plum Street, Suite 100

Syracuse, New York 13204

315.424.1111

[www.suttoncos.com](http://www.suttoncos.com)

*All information contained herein is from sources deemed reliable and is submitted subjected to errors, omissions, changes in price or other conditions, prior sale, leasing without notice. Principals should not rely solely upon the information contained herein.*



**SUTTON**  
REAL ESTATE COMPANY

**FOR LEASE | OFFICE**  
**SHERWOOD OFFICE PARK**

6702 Buckley Road Suite 140, Syracuse, NY 13212



**CONTACT EXCLUSIVE AGENTS:**

**Barton K. Feinberg**

*Senior Associate Broker*

315.447.8668

[bfeinberg@suttoncos.com](mailto:bfeinberg@suttoncos.com)

**SUTTON REAL ESTATE COMPANY**

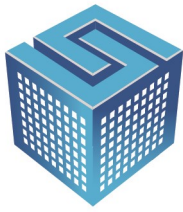
525 Plum Street, Suite 100

Syracuse, New York 13204

315.424.1111

[www.suttoncos.com](http://www.suttoncos.com)

*All information contained herein is from sources deemed reliable and is submitted subjected to errors, omissions, changes in price or other conditions, prior sale, leasing without notice. Principals should not rely solely upon the information contained herein.*



**SUTTON**  
REAL ESTATE COMPANY

**FOR LEASE | OFFICE**  
**SHERWOOD OFFICE PARK**

6702 Buckley Road Suite 140, Syracuse, NY 13212



**CONTACT EXCLUSIVE AGENTS:**

**Barton K. Feinberg**

*Senior Associate Broker*

315.447.8668

[bfeinberg@suttoncos.com](mailto:bfeinberg@suttoncos.com)

**SUTTON REAL ESTATE COMPANY**

525 Plum Street, Suite 100

Syracuse, New York 13204

315.424.1111

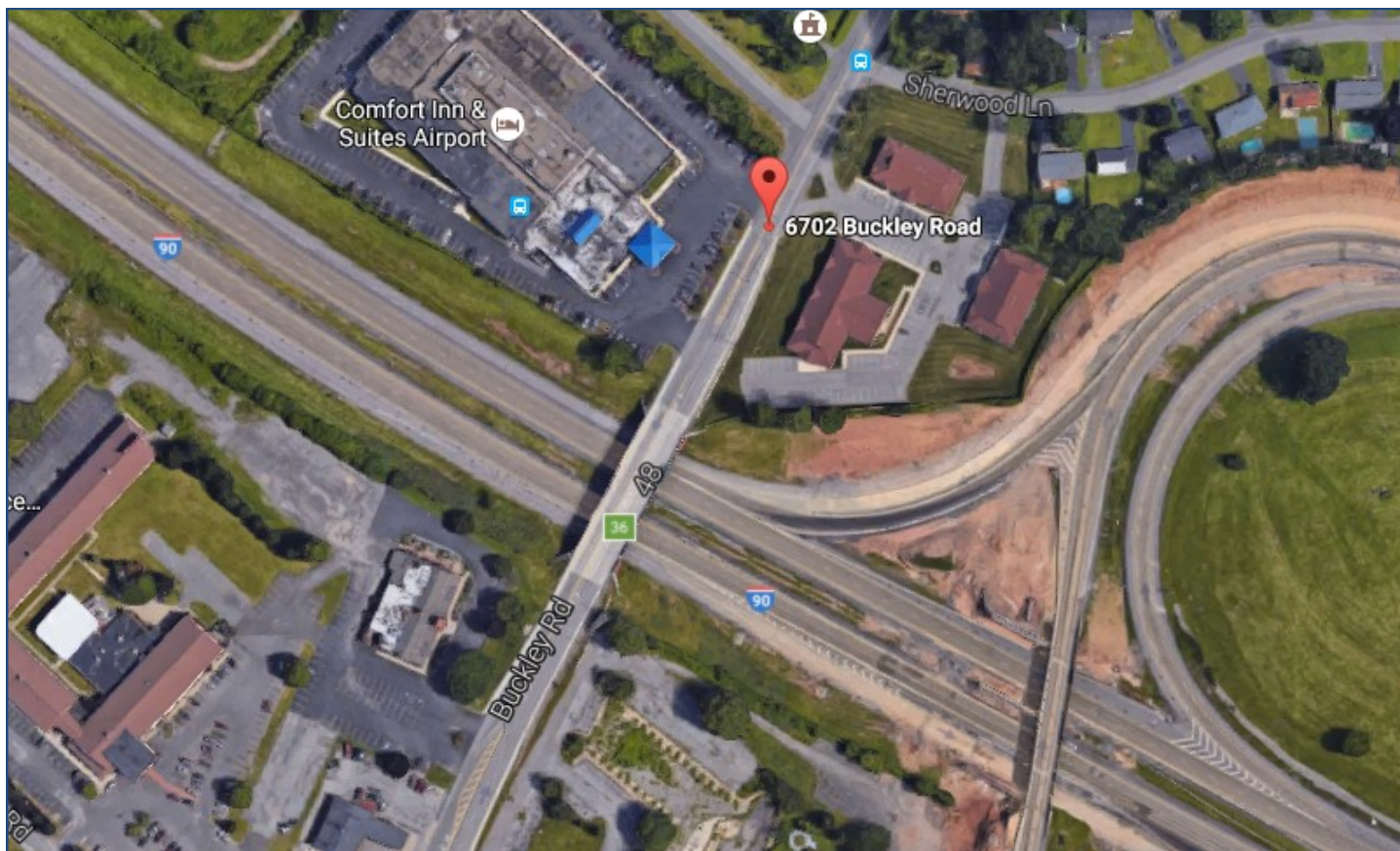
[www.suttoncos.com](http://www.suttoncos.com)

*All information contained herein is from sources deemed reliable and is submitted subjected to errors, omissions, changes in price or other conditions, prior sale, leasing without notice. Principals should not rely solely upon the information contained herein.*



**FOR LEASE | OFFICE**  
**SHERWOOD OFFICE PARK**

6702 Buckley Road Suite 140, Syracuse, NY 13212



**DEMOGRAPHICS**

	1 Mile	3 Mile	5 Mile
Businesses	337	3,027	9,529
Employees	6,968	52,113	177,409
Residential Population	8,315	74,776	213,315

Source: ESRI Report

**TRAFFIC COUNTS - 38,499**

**CONTACT EXCLUSIVE AGENTS:**

**Barton K. Feinberg**  
Senior Associate Broker  
315.447.8668  
[bfeinberg@suttoncos.com](mailto:bfeinberg@suttoncos.com)

**SUTTON REAL ESTATE COMPANY**

525 Plum Street, Suite 100  
Syracuse, New York 13204  
315.424.1111  
[www.suttoncos.com](http://www.suttoncos.com)

All information contained herein is from sources deemed reliable and is submitted subjected to errors, omissions, changes in price or other conditions, prior sale, leasing without notice. Principals should not rely solely upon the information contained herein.