



PROPERTY FEATURES

- High Traffic, High Visibility, 3,200 SF Retail Building
- Fully Leased to Established Tenants
- Great Location near Rt. 57 and John Glenn Blvd intersection
- Traffic Counts of over 22,000 Cars Daily

CONTACT EXCLUSIVE AGENT:

Stephen W. Saleski

Real Estate Associate Broker

(M): 315.727.3103

ssaleski@suttoncos.com

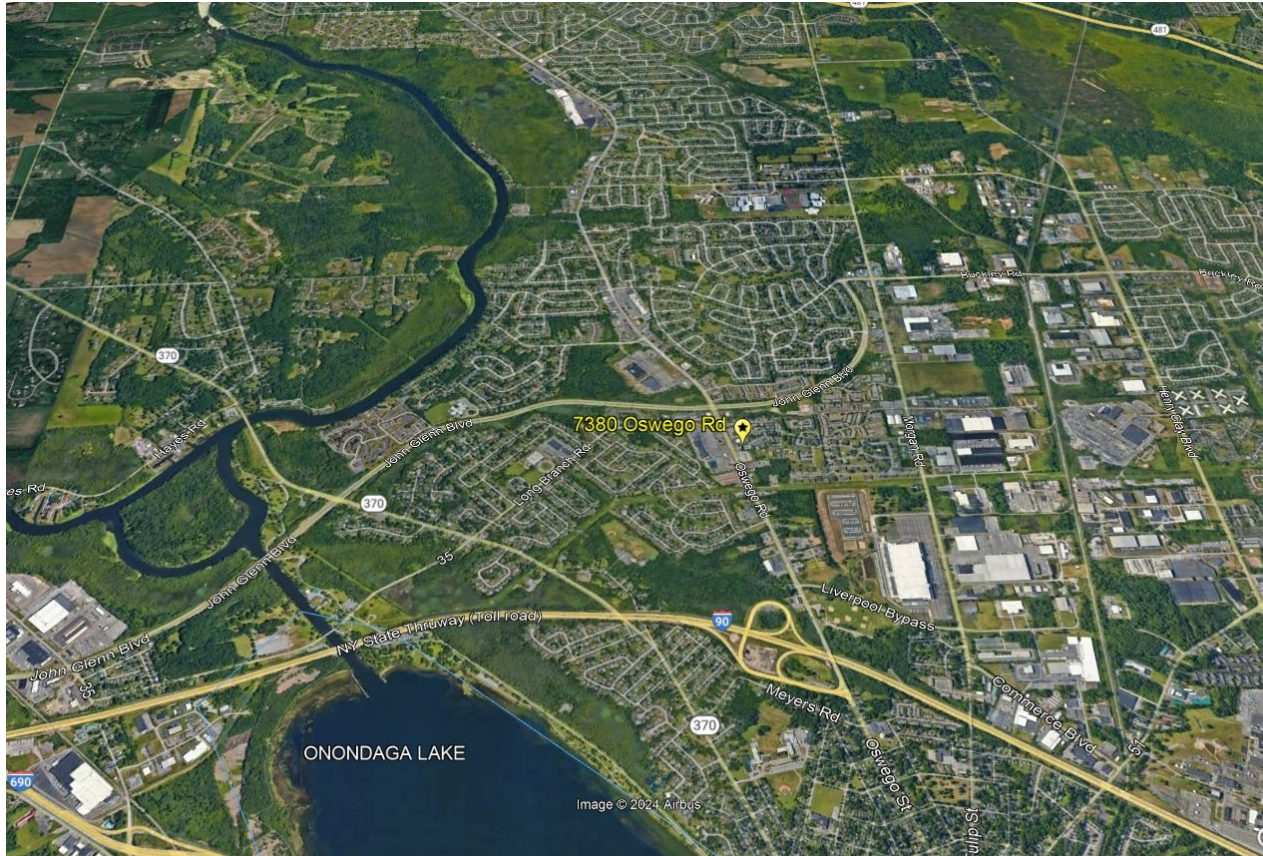
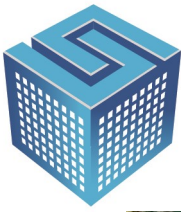
SUTTON REAL ESTATE COMPANY

525 Plum Street, Suite 100

Syracuse, New York 13204

315.424.1111

www.suttoncos.com



DEMOGRAPHICS

	1 Mile	3 Mile	5 Mile
Population	9,562	46,856	78,434
Households	4,010	20,068	32,407
Average Household Income	\$79,939	\$88,154	\$84,745
Median Household Income	\$64,201	\$69,580	\$67,773

Source: COSTAR

TRAFFIC COUNTS

- Oswego Rd. (Rt 57) —39,414
- John Glenn Blvd—11,633
- Long Branch rd.—5,761

Source: NYS DOT 2023

CONTACT EXCLUSIVE AGENT:

Stephen W. Saleski
Real Estate Associate Broker
(M): 315.727.3103
ssaleski@suttoncos.com

SUTTON REAL ESTATE COMPANY

525 Plum Street, Suite 100
Syracuse, New York 13204
315.424.1111
www.suttoncos.com



CONTACT EXCLUSIVE AGENT:

Stephen W. Saleski

Real Estate Associate Broker

(M): 315.727.3103

ssaleski@suttoncos.com

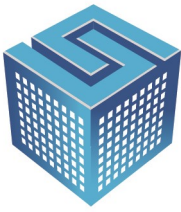
SUTTON REAL ESTATE COMPANY

525 Plum Street, Suite 100

Syracuse, New York 13204

315.424.1111

www.suttoncos.com



SUTTON
REAL ESTATE COMPANY

FOR SALE | RETAIL

7380 Oswego Rd, Liverpool, NY 13090



CONTACT EXCLUSIVE AGENT:

Stephen W. Saleski

Real Estate Associate Broker

(M): 315.727.3103

ssaleski@suttoncos.com

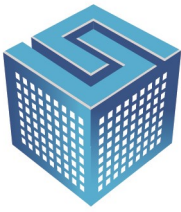
SUTTON REAL ESTATE COMPANY

525 Plum Street, Suite 100

Syracuse, New York 13204

315.424.1111

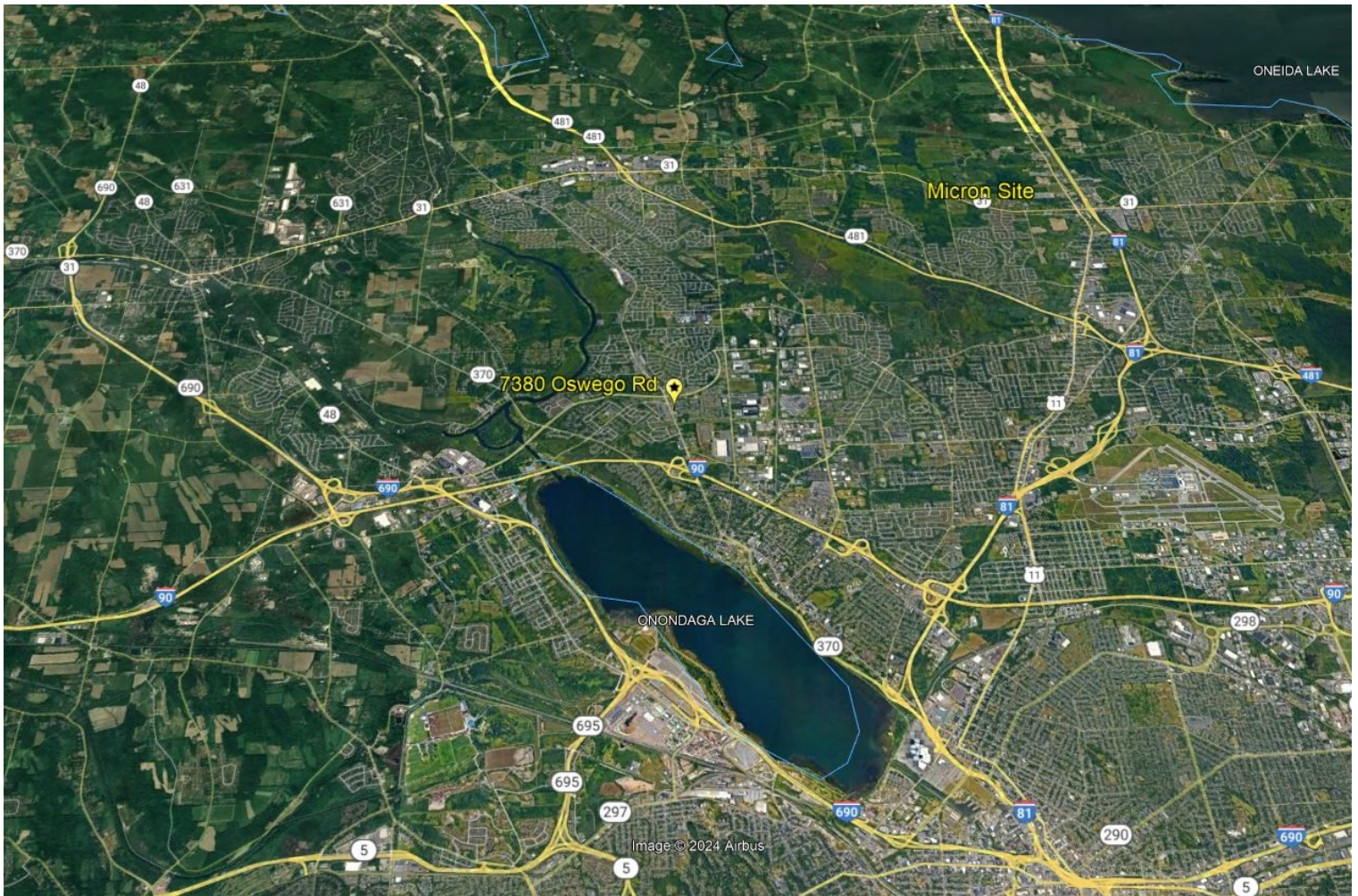
www.suttoncos.com



SUTTON
REAL ESTATE COMPANY

FOR SALE | RETAIL

7380 Oswego Rd, Liverpool, NY 13090



CONTACT EXCLUSIVE AGENT:

Stephen W. Saleski

Real Estate Associate Broker

(M): 315.727.3103

ssaleski@suttoncos.com

SUTTON REAL ESTATE COMPANY

525 Plum Street, Suite 100

Syracuse, New York 13204

315.424.1111

www.suttoncos.com