

PROPERTY FEATURES

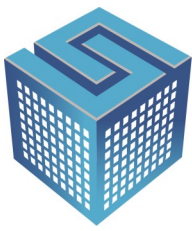
- 3.14 +/- Acre Development Parcel in Town of Clay
- High visibility, high traffic location, Zoned RA-100
- Located 1 Mile from Rt. 31 and 6 miles to Micron Chip Factory Site
- 283' Frontage on Rt. 57

CONTACT EXCLUSIVE AGENT:

Stephen W. Saleski
Real Estate Associate Broker
(M): 315.727.3103
ssaleski@suttoncos.com

SUTTON REAL ESTATE COMPANY

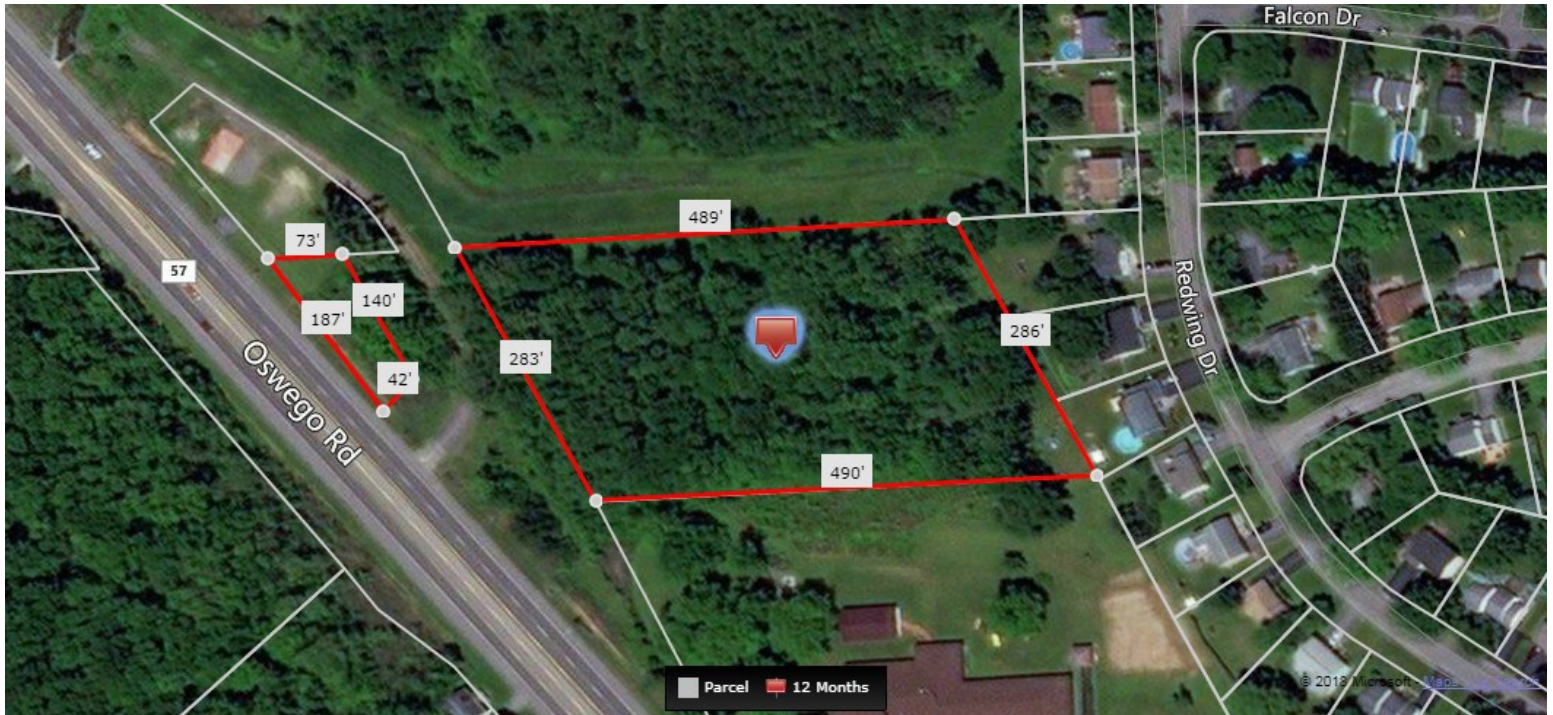
525 Plum Street, Suite 100
Syracuse, New York 13204
315.424.1111
www.suttoncos.com



SUTTON
REAL ESTATE COMPANY

FOR SALE | LAND

8300 Oswego Rd, Liverpool, NY 13090



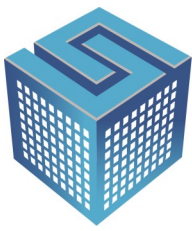
CONTACT EXCLUSIVE AGENT:

Stephen W. Saleski
Real Estate Associate Broker
(M): 315.727.3103
ssaleski@suttoncos.com

SUTTON REAL ESTATE COMPANY

525 Plum Street, Suite 100
Syracuse, New York 13204
315.424.1111
www.suttoncos.com

All information contained herein is from sources deemed reliable and is submitted subjected to errors, omissions, changes in price or other conditions, prior sale, leasing without notice. Principals should not rely solely upon the information contained herein.



SUTTON
REAL ESTATE COMPANY

FOR SALE | LAND

8300 Oswego Rd, Liverpool, NY 13090



CONTACT EXCLUSIVE AGENT:

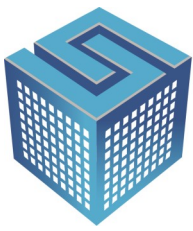
Stephen W. Saleski
Real Estate Associate Broker

(M): 315.727.3103
ssaleski@suttoncos.com

SUTTON REAL ESTATE COMPANY

525 Plum Street, Suite 100
Syracuse, New York 13204
315.424.1111
www.suttoncos.com

All information contained herein is from sources deemed reliable and is submitted subjected to errors, omissions, changes in price or other conditions, prior sale, leasing without notice. Principals should not rely solely upon the information contained herein.



SUTTON
REAL ESTATE COMPANY

FOR SALE | LAND

8300 Oswego Rd, Liverpool, NY 13090



CONTACT EXCLUSIVE AGENT:

Stephen W. Saleski

Real Estate Associate Broker

(M): 315.727.3103

ssaleski@suttoncos.com

SUTTON REAL ESTATE COMPANY

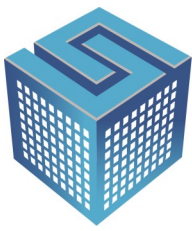
525 Plum Street, Suite 100

Syracuse, New York 13204

315.424.1111

www.suttoncos.com

All information contained herein is from sources deemed reliable and is submitted subjected to errors, omissions, changes in price or other conditions, prior sale, leasing without notice. Principals should not rely solely upon the information contained herein.



	1 Mile	3 Mile	5 Mile
Population	8,217	35,182	78,567
Households	3,163	13,834	31,922
Average Household Income	\$74,416	\$82,153	\$74,703

Source: ERSI 2022

- Rt.57/Oswego Rd. - North— 12,549
- Rt.57/Oswego Rd. - South — 25,250
- Route 31 — 28,793

Source: NYS DOT

CONTACT EXCLUSIVE AGENT:

Stephen W. Saleski
Real Estate Associate Broker
(M): 315.727.3103
ssaleski@suttoncos.com

SUTTON REAL ESTATE COMPANY

525 Plum Street, Suite 100
Syracuse, New York 13204
315.424.1111
www.suttoncos.com