



PROPERTY FEATURES

- Class A Office Space 7,451 SF
- On-Site Parking Included
- High Ceilings with Large Windows
- Energy Efficient HVAC
- Fitness Center
- On-Site Coffee Shop
- Outdoor Grilling Station
- Walkable Village Location

CONTACT EXCLUSIVE AGENT:

Joseph J. Lewis

Real Estate Broker

(M): 315.427.4785

jlewis@suttoncos.com

SUTTON REAL ESTATE COMPANY

525 Plum Street, Suite 100

Syracuse, New York 13204

315.424.1111

www.suttoncos.com



CONTACT EXCLUSIVE AGENT:

Joseph J. Lewis

Real Estate Broker

(M): 315.427.4785

jlewis@suttoncos.com

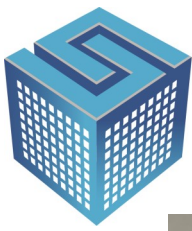
SUTTON REAL ESTATE COMPANY

525 Plum Street, Suite 100

Syracuse, New York 13204

315.424.1111

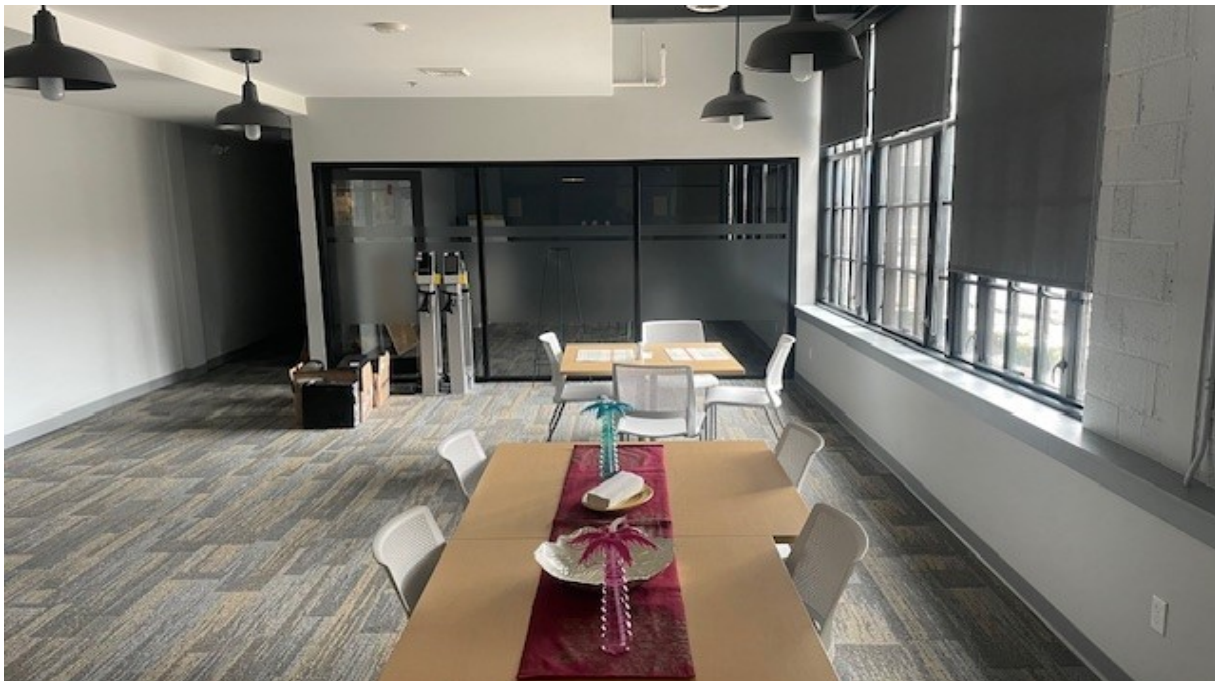
www.suttoncos.com



SUTTON
REAL ESTATE COMPANY

FOR LEASE | OFFICE
CAMILLUS CUTLERY

54 Genesee Street, Camillus, NY 13031



CONTACT EXCLUSIVE AGENT:

Joseph J. Lewis

Real Estate Broker

(M): 315.427.4785

jlewis@suttoncos.com

SUTTON REAL ESTATE COMPANY

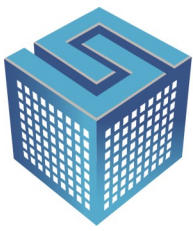
525 Plum Street, Suite 100

Syracuse, New York 13204

315.424.1111

www.suttoncos.com

All information contained herein is from sources deemed reliable and is submitted subjected to errors, omissions, changes in price or other conditions, prior sale, leasing without notice. Principals should not rely solely upon the information contained herein.



SUTTON
REAL ESTATE COMPANY

FOR LEASE | OFFICE
CAMILLUS CUTLERY

54 Genesee Street, Camillus, NY 13031



CONTACT EXCLUSIVE AGENT:

Joseph J. Lewis

Real Estate Broker

(M): 315.427.4785

jlewis@suttoncos.com

SUTTON REAL ESTATE COMPANY

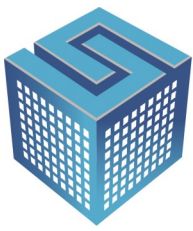
525 Plum Street, Suite 100

Syracuse, New York 13204

315.424.1111

www.suttoncos.com

All information contained herein is from sources deemed reliable and is submitted subjected to errors, omissions, changes in price or other conditions, prior sale, leasing without notice. Principals should not rely solely upon the information contained herein.



SUTTON
REAL ESTATE COMPANY

FOR LEASE | OFFICE
CAMILLUS CUTLERY

54 Genesee Street, Camillus, NY 13031



CONTACT EXCLUSIVE AGENT:

Joseph J. Lewis

Real Estate Broker

(M): 315.427.4785

jlewis@suttoncos.com

SUTTON REAL ESTATE COMPANY

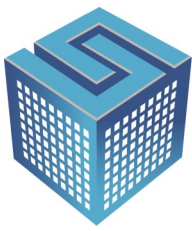
525 Plum Street, Suite 100

Syracuse, New York 13204

315.424.1111

www.suttoncos.com

All information contained herein is from sources deemed reliable and is submitted subjected to errors, omissions, changes in price or other conditions, prior sale, leasing without notice. Principals should not rely solely upon the information contained herein.



SUTTON
REAL ESTATE COMPANY

FOR LEASE | OFFICE
CAMILLUS CUTLERY

54 Genesee Street, Camillus, NY 13031



CONTACT EXCLUSIVE AGENT:

Joseph J. Lewis

Real Estate Broker

(M): 315.427.4785

jlewis@suttoncos.com

SUTTON REAL ESTATE COMPANY

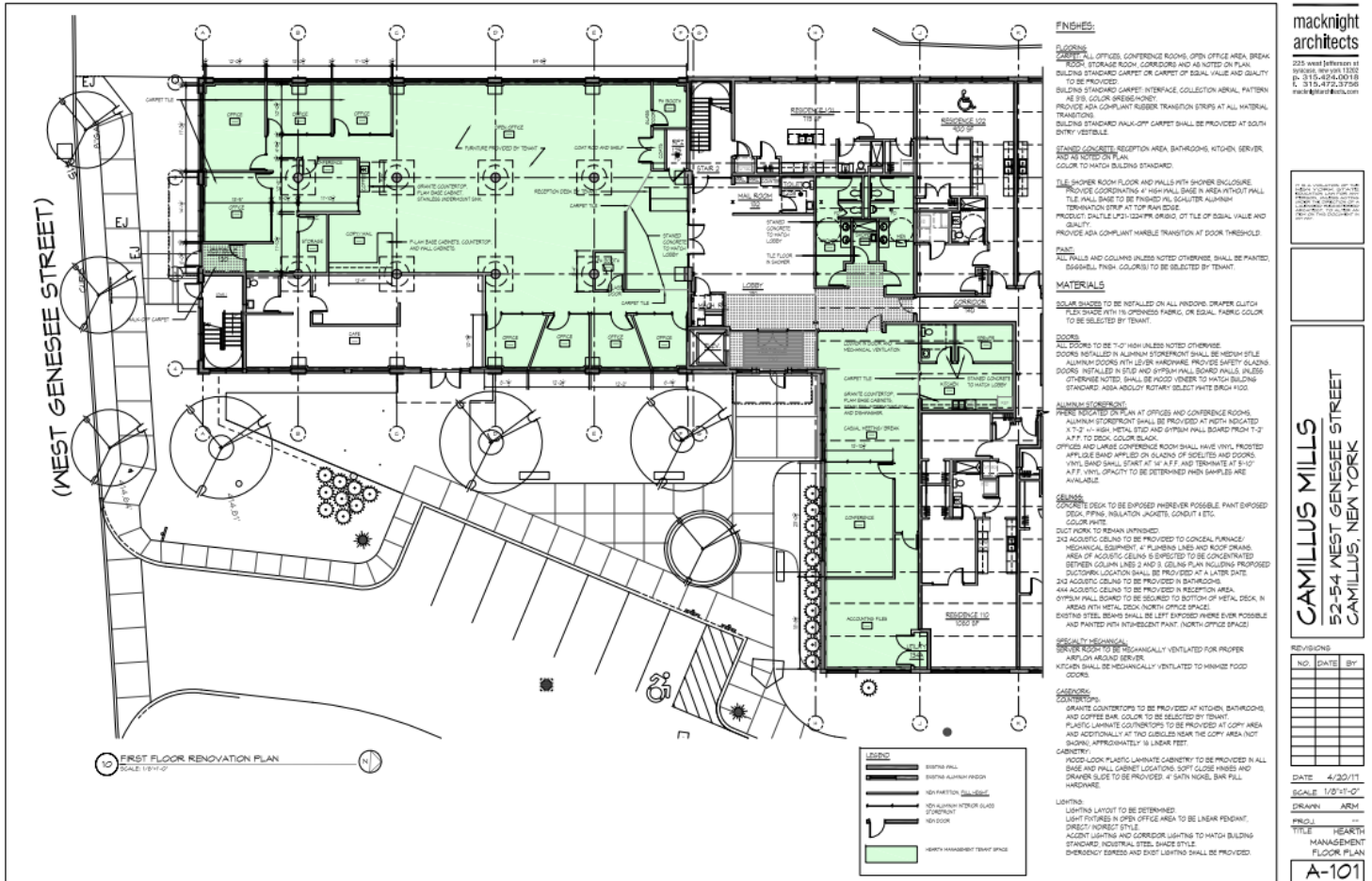
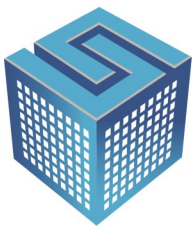
525 Plum Street, Suite 100

Syracuse, New York 13204

315.424.1111

www.suttoncos.com

All information contained herein is from sources deemed reliable and is submitted subjected to errors, omissions, changes in price or other conditions, prior sale, leasing without notice. Principals should not rely solely upon the information contained herein.



marknight architects
 235 West Jefferson St
 Syracuse, NY 13202
 P: 315.472.3736
 marknight.com

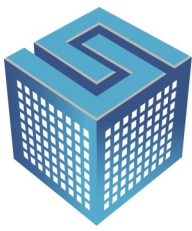
CAMILLUS MILLS
 52-54 WEST GENESSEE STREET
 CAMILLUS, NEW YORK

CONTACT EXCLUSIVE AGENT:

Joseph J. Lewis
Real Estate Broker
 (M): 315.427.4785
jlewis@suttoncos.com

SUTTON REAL ESTATE COMPANY

525 Plum Street, Suite. 100
 Syracuse, New York 13204
 315.424.1111
www.suttoncos.com



SUTTON
REAL ESTATE COMPANY

FOR LEASE | OFFICE
CAMILLUS CUTLERY

54 Genesee Street, Camillus, NY 13031



CONTACT EXCLUSIVE AGENT:

Joseph J. Lewis

Real Estate Broker

(M): 315.427.4785

jlewis@suttoncos.com

SUTTON REAL ESTATE COMPANY

525 Plum Street, Suite 100

Syracuse, New York 13204

315.424.1111

www.suttoncos.com

All information contained herein is from sources deemed reliable and is submitted subjected to errors, omissions, changes in price or other conditions, prior sale, leasing without notice. Principals should not rely solely upon the information contained herein.