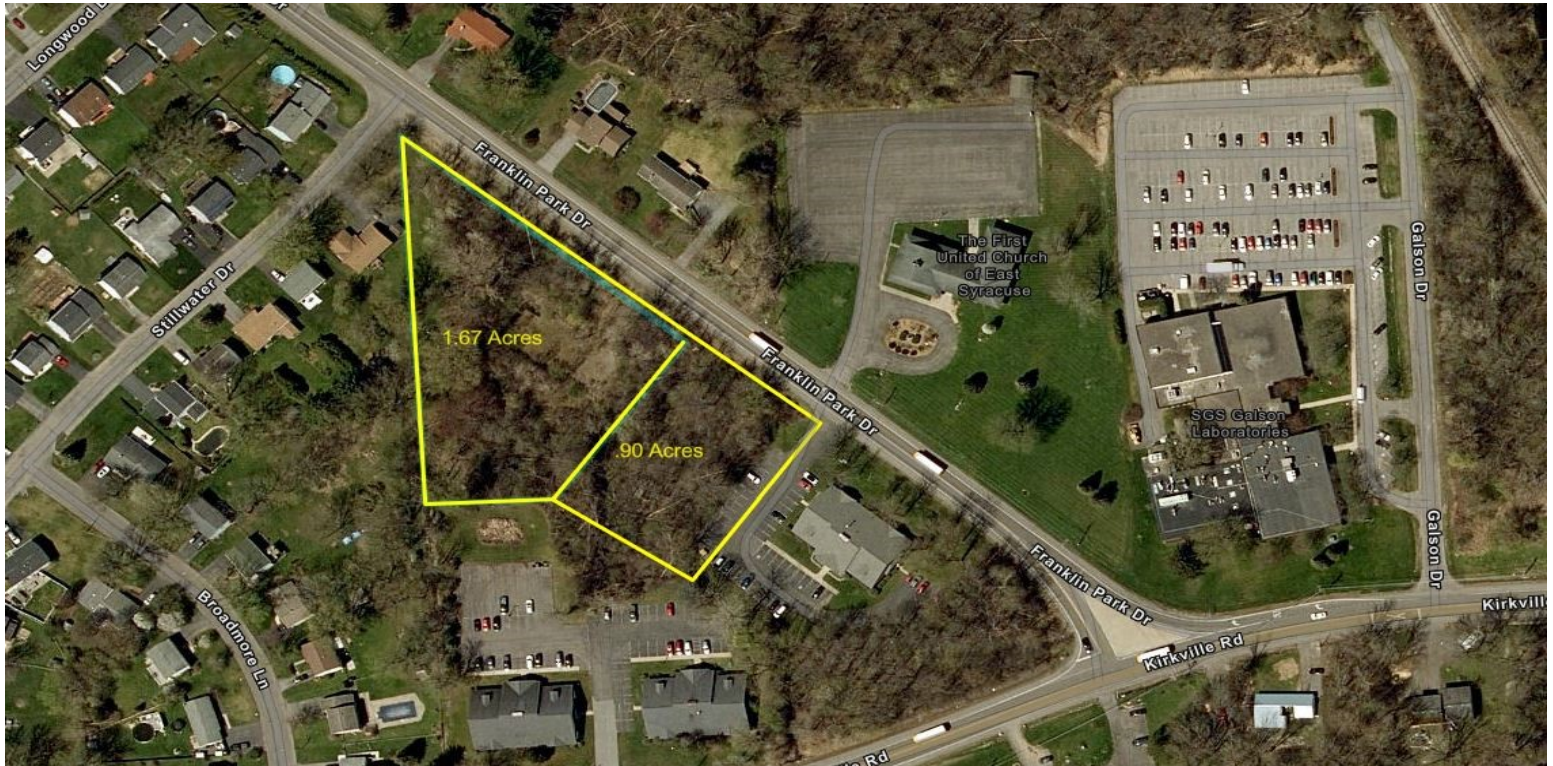


**SUTTON**  
REAL ESTATE COMPANY

**FOR SALE | LAND**

**TWO RESIDENTIAL BUILDING LOTS**

812-820 Franklin Park Drive, East Syracuse, NY 13057



## PROPERTY FEATURES

- Two Adjacent Building Lots Totaling 2.57+/- Acres
- Electric, Gas, Water, Sewer and High-Speed Internet Available
- Wooded Lot Provides Privacy
- Just Off Kirkville Rd. Near Rt. 481
- Building Plans Available for Lot

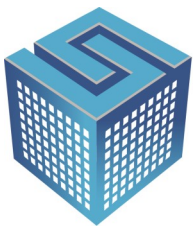
### CONTACT EXCLUSIVE AGENT:

**Stephen W. Saleski**  
*Real Estate Associate Broker*  
(M): 315.727.3103  
[ssaleski@suttoncos.com](mailto:ssaleski@suttoncos.com)

### SUTTON REAL ESTATE COMPANY

525 Plum Street, Suite 100  
Syracuse, New York 13204  
315.424.1111  
[www.suttoncos.com](http://www.suttoncos.com)

*All information contained herein is from sources deemed reliable and is submitted subjected to errors, omissions, changes in price or other conditions, prior sale, leasing without notice. Principals should not rely solely upon the information contained herein.*



**SUTTON**  
REAL ESTATE COMPANY

**FOR SALE | LAND**

**TWO RESIDENTIAL BUILDING LOTS**

812-820 Franklin Park Drive, East Syracuse, NY 13057



**CONTACT EXCLUSIVE AGENT:**

**Stephen W. Saleski**

*Real Estate Associate Broker*

(M): 315.727.3103

[ssaleski@suttoncos.com](mailto:ssaleski@suttoncos.com)

**SUTTON REAL ESTATE COMPANY**

525 Plum Street, Suite 100

Syracuse, New York 13204

315.424.1111

[www.suttoncos.com](http://www.suttoncos.com)

*All information contained herein is from sources deemed reliable and is submitted subjected to errors, omissions, changes in price or other conditions, prior sale, leasing without notice. Principals should not rely solely upon the information contained herein.*



**FOR SALE | LAND**  
**TWO RESIDENTIAL BUILDING LOTS**  
812-820 Franklin Park Drive, East Syracuse, NY 13057



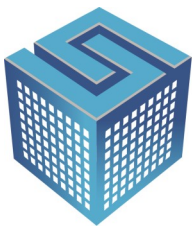
**CONTACT EXCLUSIVE AGENT:**

**Stephen W. Saleski**  
*Real Estate Associate Broker*  
(M): 315.727.3103  
[ssaleski@suttoncos.com](mailto:ssaleski@suttoncos.com)

**SUTTON REAL ESTATE COMPANY**

525 Plum Street, Suite 100  
Syracuse, New York 13204  
315.424.1111  
[www.suttoncos.com](http://www.suttoncos.com)

*All information contained herein is from sources deemed reliable and is submitted subjected to errors, omissions, changes in price or other conditions, prior sale, leasing without notice. Principals should not rely solely upon the information contained herein.*



**SUTTON**  
REAL ESTATE COMPANY

**FOR SALE | LAND**

**TWO RESIDENTIAL BUILDING LOTS**

812-820 Franklin Park Drive, East Syracuse, NY 13057



**DEMOGRAPHICS**

	<b>1 Mile</b>	<b>3 Mile</b>	<b>5 Mile</b>
<b>Population</b>	7,080	41,806	146,429
<b>Households</b>	3,185	18,097	59,912
<b>Average Household Income</b>	\$89,668	\$75,377	\$71,788
<b>Median Home Value</b>	\$143,297	\$134,034	\$140,026

Source: To go here

**TRAFFIC COUNTS**

- Franklin Park Drive —3,953
- Kirkville Road —9,960
- Kinne Street —4,000

Source: NYS DOT 2022

**CONTACT EXCLUSIVE AGENT:**

**Stephen W. Saleski**  
Real Estate Associate Broker  
(M): 315.727.3103  
ssaleski@suttoncos.com

**SUTTON REAL ESTATE COMPANY**

525 Plum Street, Suite 100  
Syracuse, New York 13204  
315.424.1111  
www.suttoncos.com

All information contained herein is from sources deemed reliable and is submitted subjected to errors, omissions, changes in price or other conditions, prior sale, leasing without notice. Principals should not rely solely upon the information contained herein.