



PROPERTY FEATURES

- Excellent Visibility 11.69 Acre Site Adjacent to Interstate Rt. 481
- Highly accessible corner location off Rt. 481 on Northern Blvd
- Just 6 miles from Micron site
- Close proximity to Syracuse Hancock Airport and downtown

CONTACT EXCLUSIVE AGENT:

Stephen W. Saleski

Real Estate Associate Broker

(M): 315.727.3103

ssaleski@suttoncos.com

SUTTON REAL ESTATE COMPANY

525 Plum Street, Suite 100

Syracuse, New York 13204

315.424.1111

www.suttoncos.com



DEMOGRAPHICS

| | 1 Mile | 3 Mile | 5 Mile |
|---------------------------------|----------|----------|----------|
| Population | 2,197 | 24,522 | 78,434 |
| Households | 857 | 10,071 | 32,407 |
| Average Household Income | \$82,995 | \$72,650 | \$71,859 |

Source: ERSI 2022

TRAFFIC COUNTS

- Interstate Rt 481—39,414
- Northern Blvd—9,677
- Taft Rd—12,491

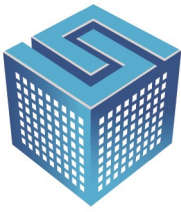
Source: NYS DOT 2019

CONTACT EXCLUSIVE AGENT:

Stephen W. Saleski
Real Estate Associate Broker
(M): 315.727.3103
ssaleski@suttoncos.com

SUTTON REAL ESTATE COMPANY

525 Plum Street, Suite 100
Syracuse, New York 13204
315.424.1111
www.suttoncos.com

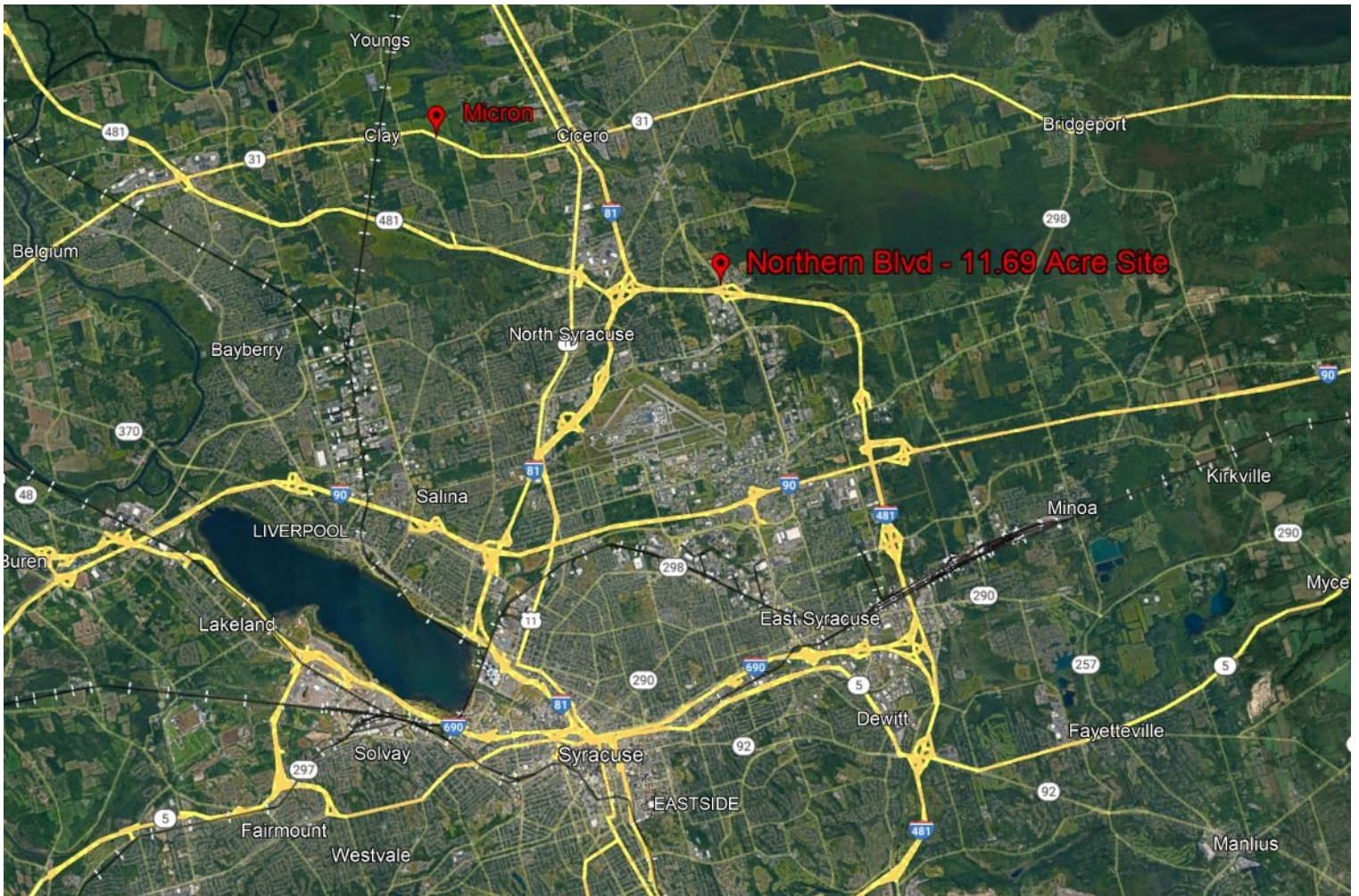


SUTTON
REAL ESTATE COMPANY

FOR SALE | LAND

11.69+/- Acre Site

Northern Blvd & Eastman Rd, Cicero, NY 13039



CONTACT EXCLUSIVE AGENT:

Stephen W. Saleski

Real Estate Associate Broker

(M): 315.727.3103

ssaleski@suttoncos.com

SUTTON REAL ESTATE COMPANY

525 Plum Street, Suite 100

Syracuse, New York 13204

315.424.1111

www.suttoncos.com



CONTACT EXCLUSIVE AGENT:

Stephen W. Saleski

Real Estate Associate Broker

(M): 315.727.3103

ssaleski@suttoncos.com

SUTTON REAL ESTATE COMPANY

525 Plum Street, Suite 100

Syracuse, New York 13204

315.424.1111

www.suttoncos.com



FOR SALE | LAND

11.69+/- Acre Site

Northern Blvd & Eastman Rd, Cicero, NY 13039



CONTACT EXCLUSIVE AGENT:

Stephen W. Saleski

Real Estate Associate Broker

(M): 315.727.3103

ssaleski@suttoncos.com

SUTTON REAL ESTATE COMPANY

525 Plum Street, Suite 100

Syracuse, New York 13204

315.424.1111

www.suttoncos.com



CONTACT EXCLUSIVE AGENT:

Stephen W. Saleski
Real Estate Associate Broker
 (M): 315.727.3103
ssaleski@suttoncos.com

SUTTON REAL ESTATE COMPANY

525 Plum Street, Suite 100
 Syracuse, New York 13204
 315.424.1111
www.suttoncos.com