



## PROPERTY FEATURES

Micron invests in the future of Central New York!

Micron Technology Inc.'s semiconductor facility at Central New York's White Pine site is the largest proposed project in the Central New York region's history, and among the largest industrial manufacturing investments in U.S. history. Over the next 20 years Micron will invest up to \$100 billion and create 9,000 Micron jobs and 40,000 community jobs.

- 30 Plus Parking
- Office Building 2,900 SF+/- consisting of two suites 1,300 SF and 1,600 SF of former clinical space.
- Easy Access with Curb Cuts on Taft and Lawrence
- Excellent Exposure -Easy Access to Interstates 81, 481 and NYS Thruway
- Minutes to Syracuse International Airport and Downtown Syracuse

### CONTACT EXCLUSIVE AGENT:

**Barton K Feinberg**

Associate Broker

315.447.8668

[bfeinberg@suttoncos.com](mailto:bfeinberg@suttoncos.com)

### SUTTON REAL ESTATE COMPANY

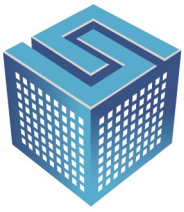
525 Plum Street, Suite 100

Syracuse, New York 13204

315.424.1111

[www.suttoncos.com](http://www.suttoncos.com)



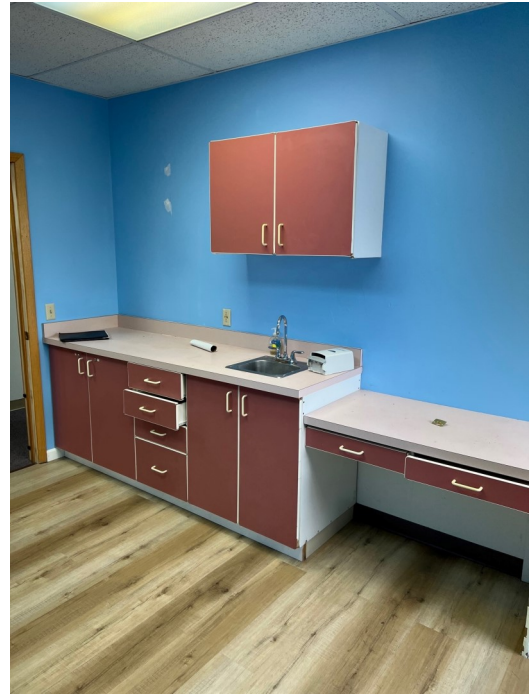
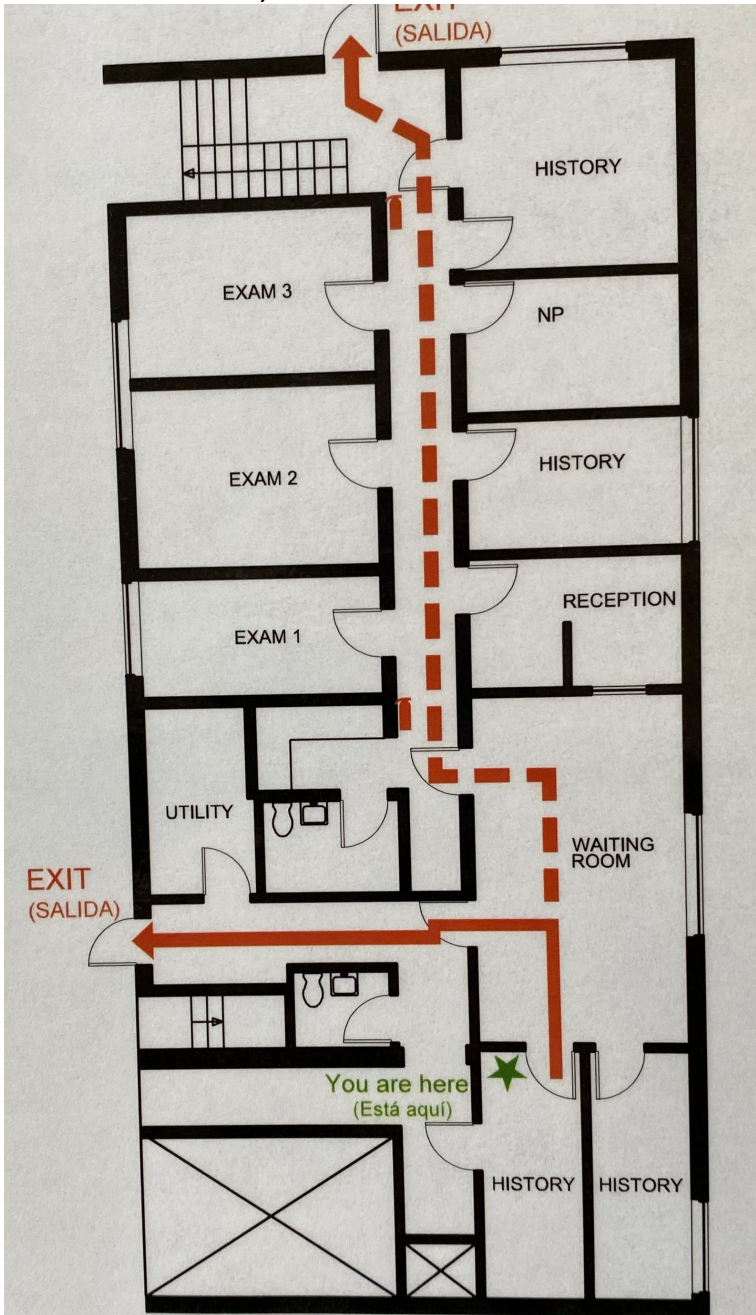


**SUTTON**  
REAL ESTATE COMPANY

**FOR LEASE | OFFICE**

113 Taft Rd, N Syracuse, NY 13212

1,600 SF



**CONTACT EXCLUSIVE AGENT:**

**Barton K Feinberg**

Associate Broker

315.447.8668

[bfeinberg@suttoncos.com](mailto:bfeinberg@suttoncos.com)

**SUTTON REAL ESTATE COMPANY**

525 Plum Street, Suite 100

Syracuse, New York 13204

315.424.1111

[www.suttoncos.com](http://www.suttoncos.com)

All information contained herein is from sources deemed reliable and is submitted subjected to errors, omissions, changes in price or other conditions, prior sale, leasing without notice. Principals should not rely solely upon the information contained herein.





**FOR LEASE | OFFICE**

113 Taft Rd, N Syracuse, NY 13212



**CONTACT EXCLUSIVE AGENT:**

**Barton K Feinberg**

*Associate Broker*

315.447.8668

[bfeinberg@suttoncos.com](mailto:bfeinberg@suttoncos.com)

**SUTTON REAL ESTATE COMPANY**

525 Plum Street, Suite 100

Syracuse, New York 13204

315.424.1111

[www.suttoncos.com](http://www.suttoncos.com)

*All information contained herein is from sources deemed reliable and is submitted subjected to errors, omissions, changes in price or other conditions, prior sale, leasing without notice. Principals should not rely solely upon the information contained herein.*





**DEMOGRAPHICS**

	2 Mile	5 Mile	10 Mile
<b>Population</b>	28,440	148,619	399,696
<b>Households</b>	12,255	63,530	165,398
<b>Average Household Income</b>	\$76,789	\$76,200	\$80,251
<b>Employees</b>	14,151	101,282	251,745
<b>Daytime Businesses</b>	1,555	8,611	21,403

**TRAFFIC COUNTS**

- East Taft Road—21,741 AADT
- Main Street—16,398 AADT
- South Bay Road—16,944 AADT

**CONTACT EXCLUSIVE AGENT:**

**Barton K Feinberg**  
Associate Broker  
315.447.8668  
[bfeinberg@suttoncos.com](mailto:bfeinberg@suttoncos.com)

**SUTTON REAL ESTATE COMPANY**

525 Plum Street, Suite 100  
Syracuse, New York 13204  
315.424.1111  
[www.suttoncos.com](http://www.suttoncos.com)

All information contained herein is from sources deemed reliable and is submitted subjected to errors, omissions, changes in price or other conditions, prior sale, leasing without notice. Principals should not rely solely upon the information contained herein.