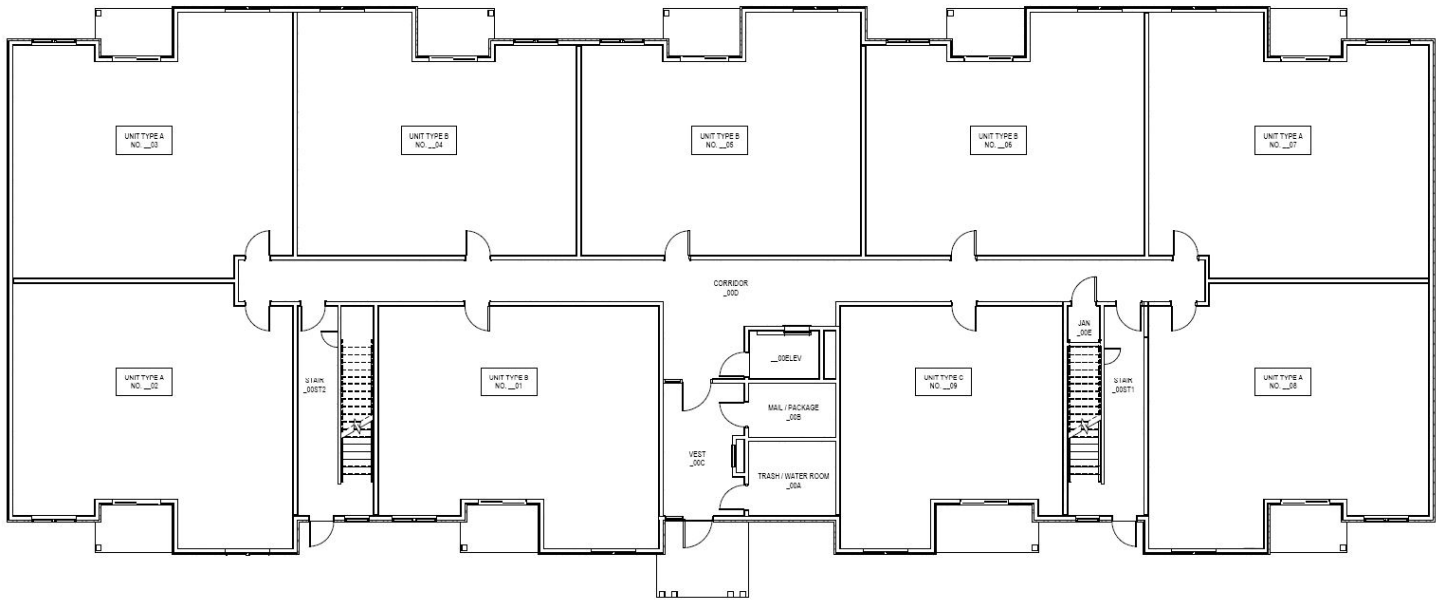


Building 03 – 1st Floor

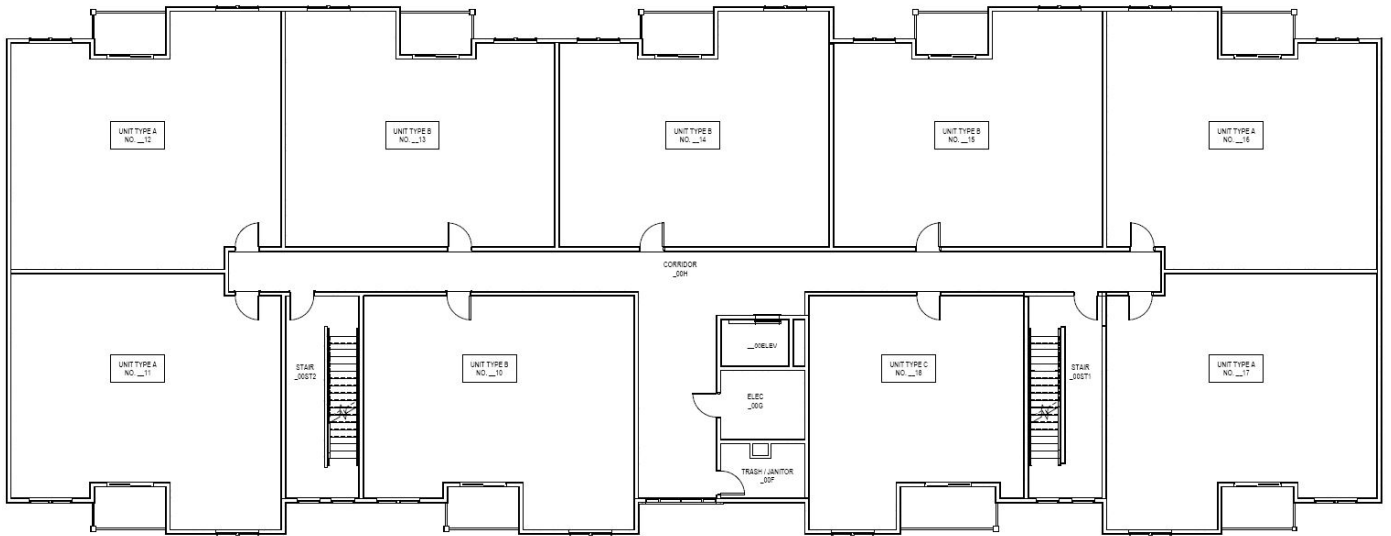


NOTE:
FIRST NUMBER OF EACH ROOM TO BE THE BUILDING NUMBER.
EXAMPLE - BUILDING 3 ROOMS SHOULD READ 303, 304, 309 ETC;
BUILDING 15 ROOMS SHOULD READ 1503, 1504, 1509 ETC.

A4 NUMBERING PLAN - LARGE BUILDING - 1ST FLOOR
1/8" = 1'-0"

APT NUMBER	FLOOR	TYPE	NAME	DESCRIPTION	LOCATION	SQ FT	PRICE	RESERVED
301	1ST	Type B	Canal	2 Bed/ x2 Bath	Inline	935	2195	
302	1ST	Type A	Glacier	2 Bed/ x2 Bath	Corner	1015	2300	
303	1ST	Type A	Glacier	2 Bed/ x2 Bath	Corner	1015	2300	
304	1ST	Type B	Canal	2 Bed/ x2 Bath	Inline	935	2195	
305	1ST	Type B	Canal	2 Bed/ x2 Bath	Inline	935	2195	
306	1ST	Type B	Canal	2 Bed/ x2 Bath	Inline	935	2195	
307	1ST	Type A	Glacier	2 Bed/ x2 Bath	Corner	1015	2300	
308	1ST	Type A	Glacier	2 Bed/ x2 Bath	Corner	1015	2300	
309	1ST	Type C	River	1 Bed/ x1 Bath	Inline	750	1760	

Building 03 – 2nd Floor

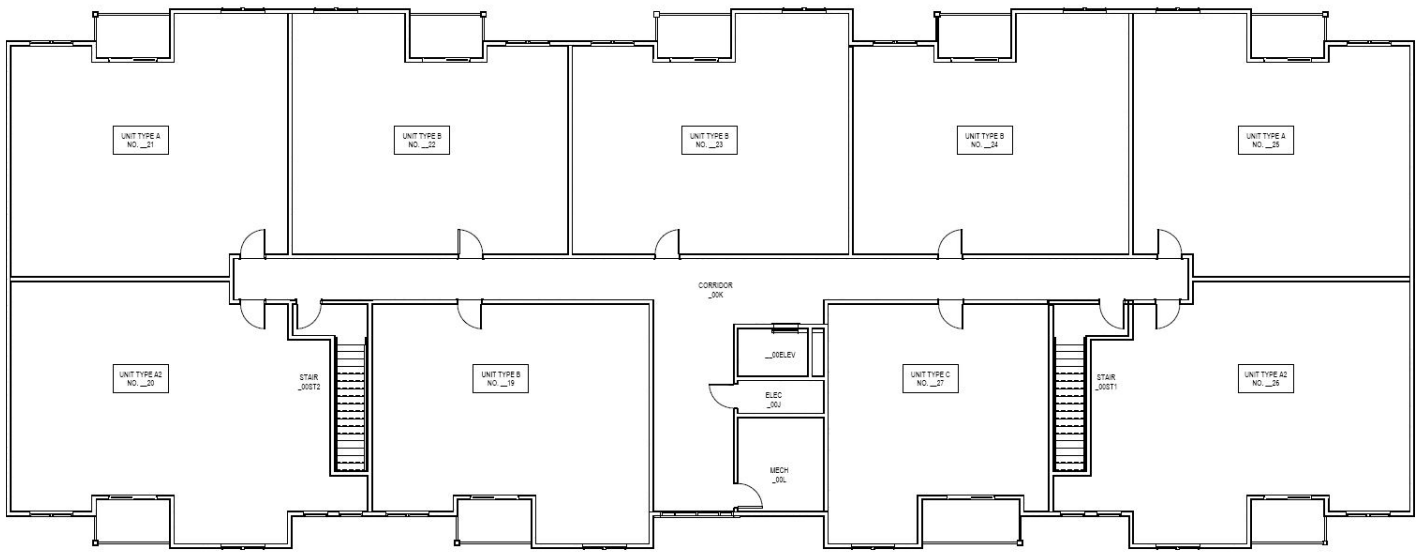


NOTE:
FIRST NUMBER OF EACH ROOM TO BE THE BUILDING NUMBER.
EXAMPLE - BUILDING 3 ROOMS SHOULD READ 303, 304, 305 ETC;
BUILDING 15 ROOMS SHOULD READ 1503, 1504, 1505 ETC.

E4 NUMBERING PLAN - LARGE BUILDING - 2ND FLOOR
1/8" = 1'-0"

APT NUMBER	FLOOR	TYPE	NAME	DESCRIPTION	LOCATION	SQ FT	PRICE	RESERVED
310	2ND	Type B	Canal	2 Bed/ x2 Bath	Inline	935	2195	
311	2ND	Type A	Glacier	2 Bed/ x2 Bath	Corner	1015	2300	
312	2ND	Type A	Glacier	2 Bed/ x2 Bath	Corner	1015	2300	
313	2ND	Type B	Canal	2 Bed/ x2 Bath	Inline	935	2195	
314	2ND	Type B	Canal	2 Bed/ x2 Bath	Inline	935	2195	
315	2ND	Type B	Canal	2 Bed/ x2 Bath	Inline	935	2195	
316	2ND	Type A	Glacier	2 Bed/ x2 Bath	Corner	1015	2300	
317	2ND	Type A	Glacier	2 Bed/ x2 Bath	Corner	1015	2300	
318	2ND	Type C	River	1 Bed/ x1 Bath	Inline	750	1760	

Building 03 – 3rd Floor

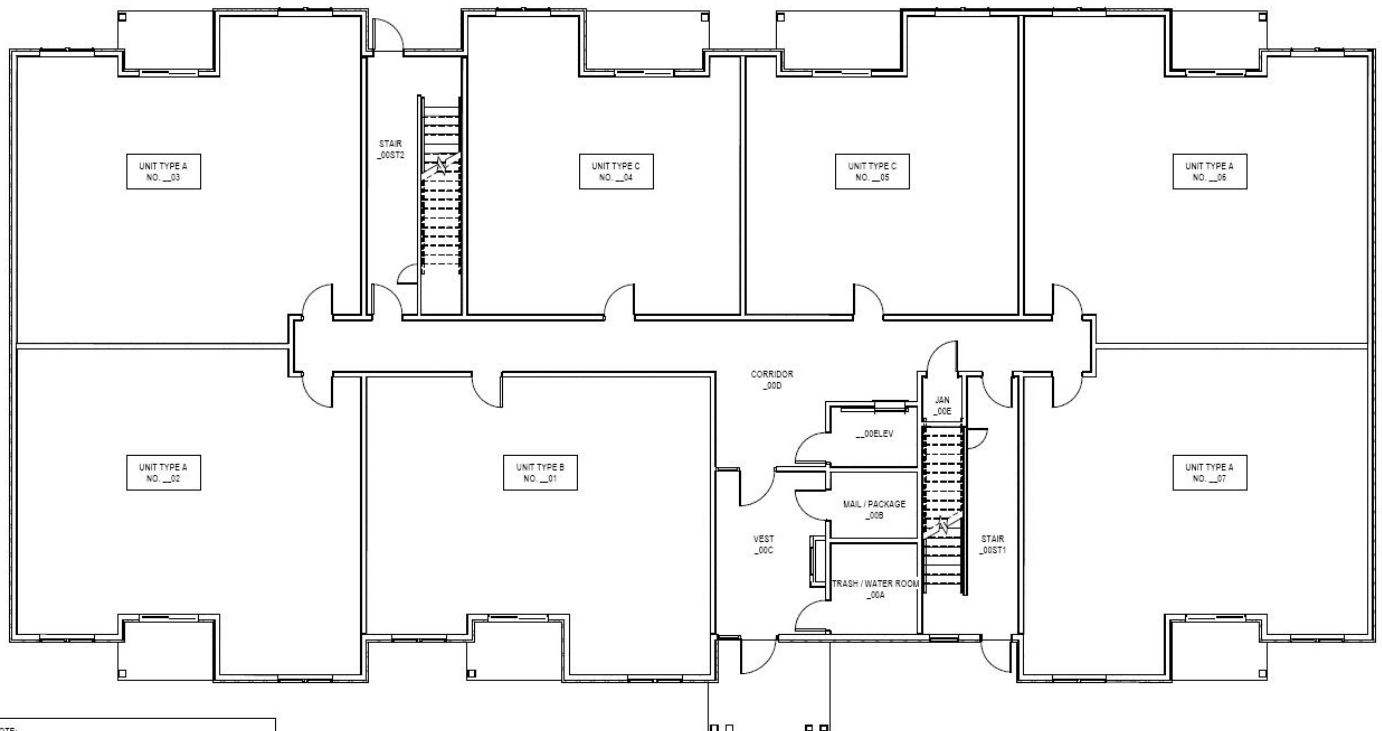


NOTE:
FIRST NUMBER OF EACH ROOM TO BE THE BUILDING NUMBER.
EXAMPLE - BUILDING 3 ROOMS SHOULD READ 303, 304, 305 ETC.
BUILDING 15 ROOMS SHOULD READ 1503, 1504, 1505 ETC.

A4 NUMBERING PLAN - LARGE BUILDING - 3RD FLOOR
1/8" = 1'-0"

APT NUMBER	FLOOR	TYPE	NAME	DESCRIPTION	LOCATION	SQ FT	PRICE	RESERVED
319	3RD	Type B	Canal	2 Bed/ x2 Bath	Inline	935	2275	
320	3RD	Type A2		2 Bed/ x2 Bath	Corner	1050	2450	
321	3RD	Type A	Glacier	2 Bed/ x2 Bath	Corner	1015	2350	
322	3RD	Type B	Canal	2 Bed/ x2 Bath	Inline	935	2275	
323	3RD	Type B	Canal	2 Bed/ x2 Bath	Inline	935	2275	
324	3RD	Type B	Canal	2 Bed/ x2 Bath	Inline	935	2275	
325	3RD	Type A	Glacier	2 Bed/ x2 Bath	Corner	1015	2350	
326	3RD	Type A2		2 Bed/ x2 Bath	Corner	1050	2450	
327	3RD	Type C	River	1 Bed/ x1 Bath	Inline	750	1850	

Building 05– 1st Floor

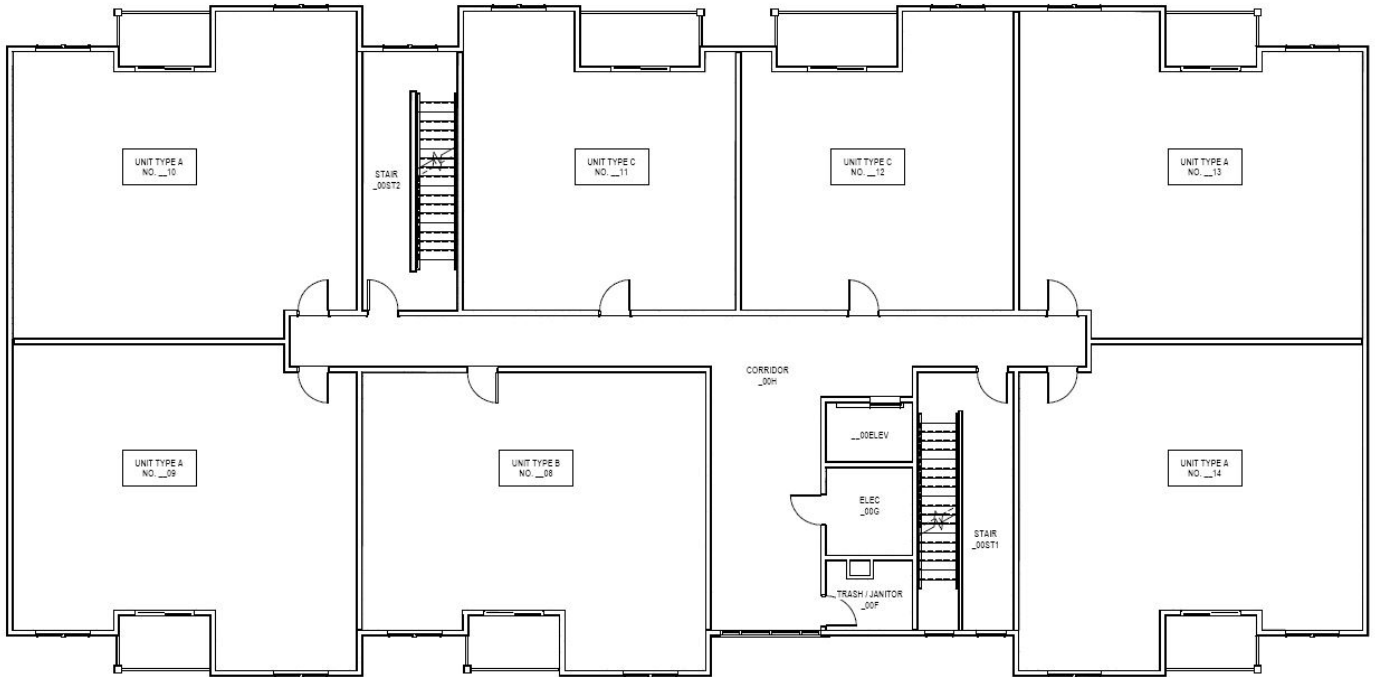


NOTE:
FIRST NUMBER OF EACH ROOM TO BE THE BUILDING NUMBER.
EXAMPLE - BUILDING 3 ROOMS SHOULD READ 303, 304, 305 ETC;
BUILDING 15 ROOMS SHOULD READ 1503, 1504, 1505 ETC.

A5 NUMBERING PLAN - MEDIUM BUILDING - 1ST FLOOR
1/8" = 1'-0"

APT NUMBER	FLOOR	TYPE	NAME	DESCRIPTION	LOCATION	SQ FT	PRICE	RESERVED
501	1ST	Type B	Canal	2 Bed/ x2 Bath	Inline	935	2195	
502	1ST	Type A	Glacier	2 Bed/ x2 Bath	Corner	1015	2300	
503	1ST	Type A	Glacier	2 Bed/ x2 Bath	Corner	1015	2300	
504	1ST	Type C	River	1 Bed/ x1 Bath	Inline	750	1760	
505	1ST	Type C	River	1 Bed/ x1 Bath	Inline	750	1760	
506	1ST	Type A	Glacier	2 Bed/ x2 Bath	Corner	1015	2300	
507	1ST	Type A	Glacier	2 Bed/ x2 Bath	Corner	1015	2300	

Building 05– 2nd Floor

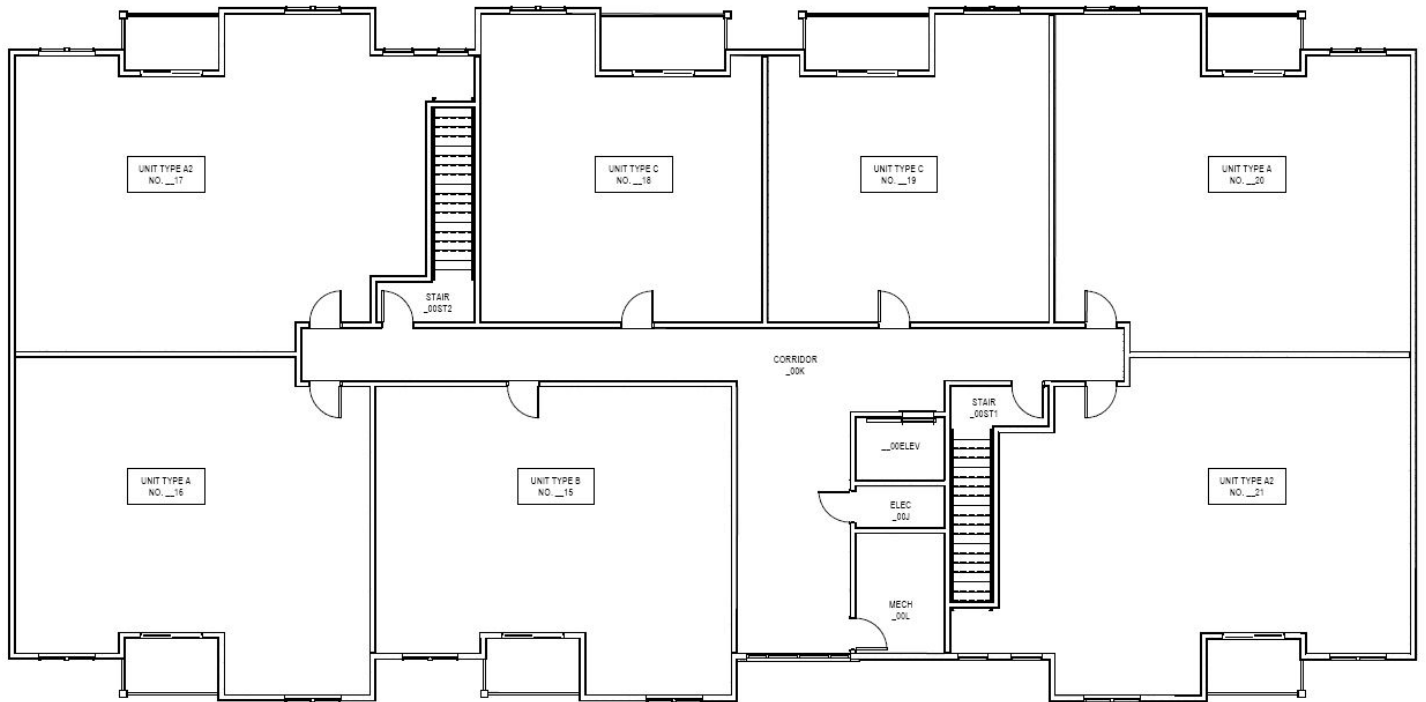


NOTE:
FIRST NUMBER OF EACH ROOM TO BE THE BUILDING NUMBER.
EXAMPLE - BUILDING 3 ROOMS SHOULD READ 303, 304, 305 ETC;
BUILDING 15 ROOMS SHOULD READ 1503, 1504, 1505 ETC.

E5 NUMBERING PLAN - MEDIUM BUILDING - 2ND FLOOR
1/8" = 1'-0"

APT NUMBER	FLOOR	TYPE	NAME	DESCRIPTION	LOCATION	SQ FT	PRICE	RESERVED
508	2ND	Type B	Canal	2 Bed/ x2 Bath	Inline	935	2195	
509	2ND	Type A	Glacier	2 Bed/ x2 Bath	Corner	1015	2300	
510	2ND	Type A	Glacier	2 Bed/ x2 Bath	Corner	1015	2300	
511	2ND	Type C	River	1 Bed/ x1 Bath	Inline	750	1760	
512	2ND	Type C	River	1 Bed/ x1 Bath	Inline	750	1760	
513	2ND	Type A	Glacier	2 Bed/ x2 Bath	Corner	1015	2300	
514	2ND	Type A	Glacier	2 Bed/ x2 Bath	Corner	1015	2300	

Building 05– 3rd Floor

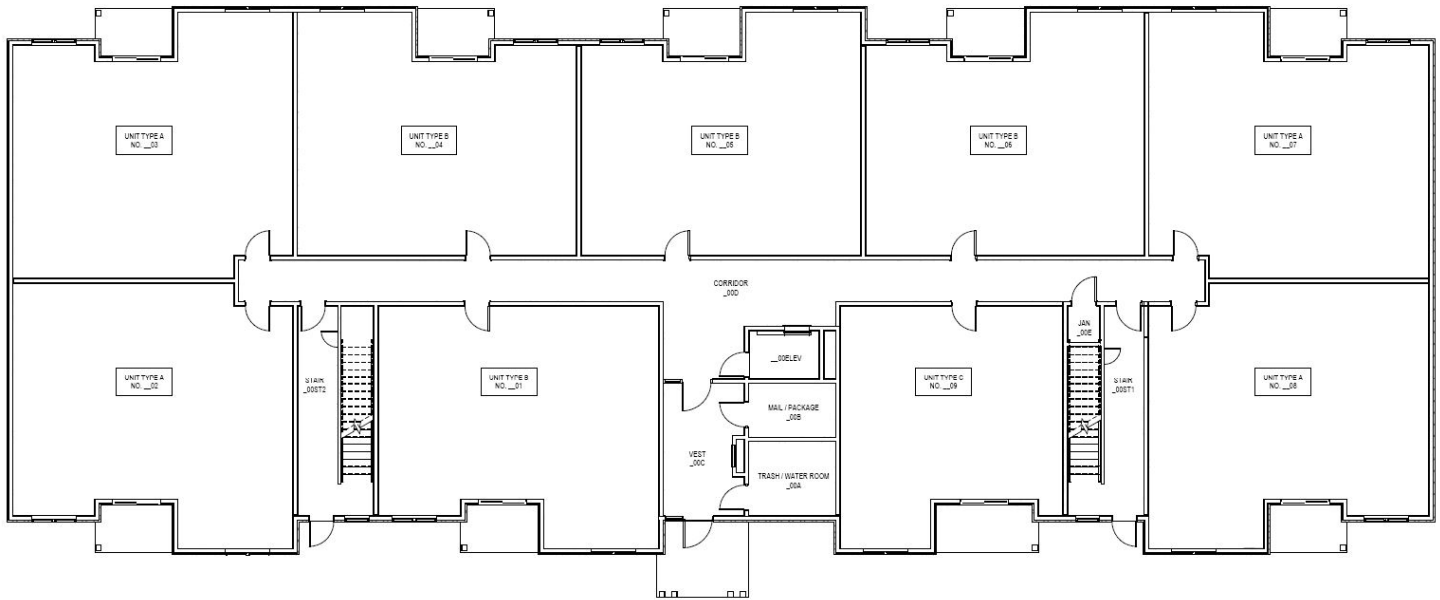


NOTE:
FIRST NUMBER OF EACH ROOM TO BE THE BUILDING NUMBER.
EXAMPLE - BUILDING 3 ROOMS SHOULD READ 303, 304, 305 ETC.
BUILDING 15 ROOMS SHOULD READ 1503, 1504, 1505 ETC.

E5 NUMBERING PLAN - MEDIUM BUILDING - 3RD FLOOR
1/8" = 1'-0"

APT NUMBER	FLOOR	TYPE	NAME	DESCRIPTION	LOCATION	SQ FT	PRICE	RESERVED
515	3RD	Type B	Canal	2 Bed/ x2 Bath	Inline	935	2275	
516	3RD	Type A	Glacier	2 Bed/ x2 Bath	Corner	1015	2350	
517	3RD	Type A2		2 Bed/ x2 Bath	Corner	1050	2425	
518	3RD	Type C	River	1 Bed/ x1 Bath	Inline	750	1850	
519	3RD	Type C	River	1 Bed/ x1 Bath	Inline	750	1850	
520	3RD	Type A	Glacier	2 Bed/ x2 Bath	Corner	1015	2350	
521	3RD	Type A2		2 Bed/ x2 Bath	Corner	1050	2425	

Building 07 – 1st Floor



NOTE:
FIRST NUMBER OF EACH ROOM TO BE THE BUILDING NUMBER.
EXAMPLE - BUILDING 3 ROOMS SHOULD READ 303, 304, 309 ETC;
BUILDING 15 ROOMS SHOULD READ 1503, 1504, 1509 ETC.

A4 NUMBERING PLAN - LARGE BUILDING - 1ST FLOOR
1/8" = 1'-0"

APT NUMBER	FLOOR	TYPE	NAME	DESCRIPTION	LOCATION	SQ FT	PRICE	RESERVED
701	1ST	Type B	Canal	2 Bed/ x2 Bath	Inline	935	2275	
702	1ST	Type A	Glacier	2 Bed/ x2 Bath	Corner	1015	2350	
703	1ST	Type A	Glacier	2 Bed/ x2 Bath	Corner	1015	2350	
704	1ST	Type B	Canal	2 Bed/ x2 Bath	Inline	935	2275	
705	1ST	Type B	Canal	2 Bed/ x2 Bath	Inline	935	2275	
706	1ST	Type B	Canal	2 Bed/ x2 Bath	Inline	935	2275	
707	1ST	Type A	Glacier	2 Bed/ x2 Bath	Corner	1015	2350	
708	1ST	Type A	Glacier	2 Bed/ x2 Bath	Corner	1015	2350	
709	1ST	Type C	River	1 Bed/ x1 Bath	Inline	750	1850	

Building 07 – 2nd Floor

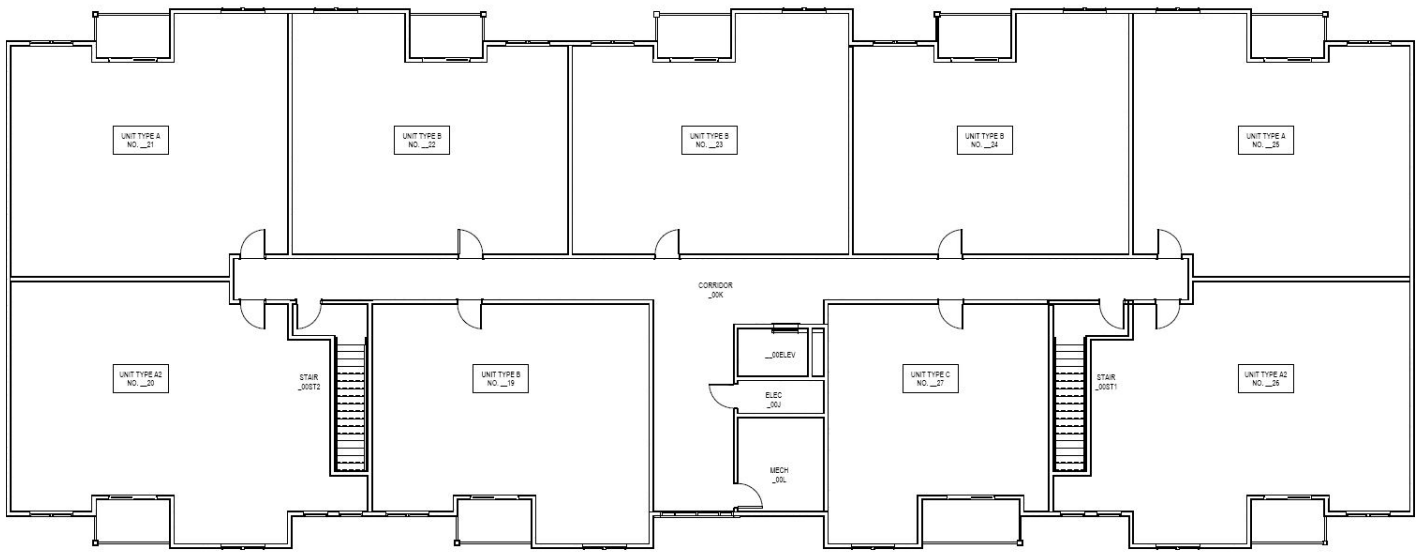


NOTE:
FIRST NUMBER OF EACH ROOM TO BE THE BUILDING NUMBER.
EXAMPLE - BUILDING 3 ROOMS SHOULD READ 303, 304, 305 ETC;
BUILDING 15 ROOMS SHOULD READ 1503, 1504, 1505 ETC.

E4 NUMBERING PLAN - LARGE BUILDING - 2ND FLOOR
1/8" = 1'-0"

APT NUMBER	FLOOR	TYPE	NAME	DESCRIPTION	LOCATION	SQ FT	PRICE	RESERVED
710	2ND	Type B	Canal	2 Bed/ x2 Bath	Inline	935	2275	
711	2ND	Type A	Glacier	2 Bed/ x2 Bath	Corner	1015	2350	
712	2ND	Type A	Glacier	2 Bed/ x2 Bath	Corner	1015	2350	
713	2ND	Type B	Canal	2 Bed/ x2 Bath	Inline	935	2275	
714	2ND	Type B	Canal	2 Bed/ x2 Bath	Inline	935	2275	
715	2ND	Type B	Canal	2 Bed/ x2 Bath	Inline	935	2275	
716	2ND	Type A	Glacier	2 Bed/ x2 Bath	Corner	1015	2350	
717	2ND	Type A	Glacier	2 Bed/ x2 Bath	Corner	1015	2350	
718	2ND	Type C	River	1 Bed/ x1 Bath	Inline	750	1850	

Building 07 – 3rd Floor

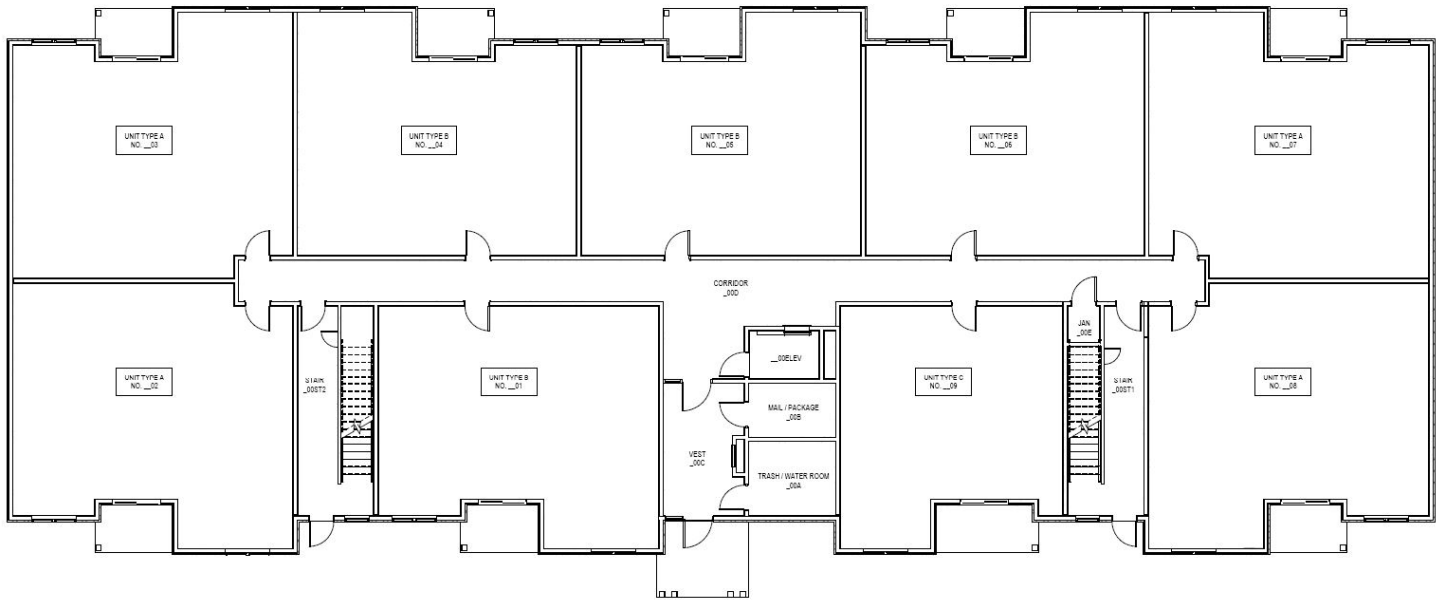


NOTE:
FIRST NUMBER OF EACH ROOM TO BE THE BUILDING NUMBER.
EXAMPLE - BUILDING 3 ROOMS SHOULD READ 303, 304, 305 ETC.
BUILDING 15 ROOMS SHOULD READ 1503, 1504, 1505 ETC.

A4 NUMBERING PLAN - LARGE BUILDING - 3RD FLOOR
1/8" = 1'-0"

APT NUMBER	FLOOR	TYPE	NAME	DESCRIPTION	LOCATION	SQ FT	PRICE	RESERVED
719	3RD	Type B	Canal	2 Bed/ x2 Bath	Inline	935	2310	
720	3RD	Type A2		2 Bed/ x2 Bath	Corner	1050	2525	
721	3RD	Type A	Glacier	2 Bed/ x2 Bath	Corner	1015	2435	
722	3RD	Type B	Canal	2 Bed/ x2 Bath	Inline	935	2310	
723	3RD	Type B	Canal	2 Bed/ x2 Bath	Inline	935	2310	
724	3RD	Type B	Canal	2 Bed/ x2 Bath	Inline	935	2310	
725	3RD	Type A	Glacier	2 Bed/ x2 Bath	Corner	1015	2435	
726	3RD	Type A2		2 Bed/ x2 Bath	Corner	1050	2525	
727	3RD	Type C	River	1 Bed/ x1 Bath	Inline	750	1935	

Building 11 – 1st Floor



NOTE:
FIRST NUMBER OF EACH ROOM TO BE THE BUILDING NUMBER.
EXAMPLE - BUILDING 3 ROOMS SHOULD READ 303, 304, 309 ETC;
BUILDING 15 ROOMS SHOULD READ 1503, 1504, 1509 ETC.

APT NUMBER	FLOOR	TYPE	NAME	DESCRIPTION	LOCATION	SQ FT	PRICE	RESERVED
1101	1ST	Type B	Canal	2 Bed/ x2 Bath	Inline	935	2275	
1102	1ST	Type A	Glacier	2 Bed/ x2 Bath	Corner	1015	2350	
1103	1ST	Type A	Glacier	2 Bed/ x2 Bath	Corner	1015	2350	
1104	1ST	Type B	Canal	2 Bed/ x2 Bath	Inline	935	2275	
1105	1ST	Type B	Canal	2 Bed/ x2 Bath	Inline	935	2275	
1106	1ST	Type B	Canal	2 Bed/ x2 Bath	Inline	935	2275	
1107	1ST	Type A	Glacier	2 Bed/ x2 Bath	Corner	1015	2350	
1108	1ST	Type A	Glacier	2 Bed/ x2 Bath	Corner	1015	2350	
1109	1ST	Type C	River	1 Bed/ x1 Bath	Inline	750	1850	

Building 11 – 2nd Floor

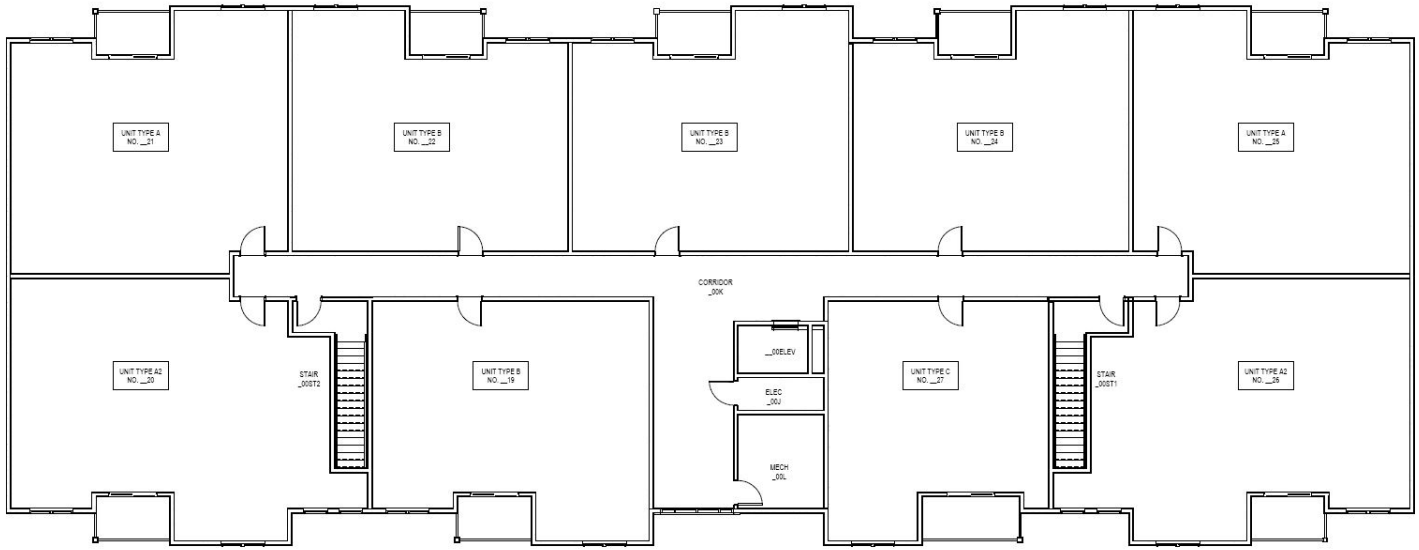


NOTE:
FIRST NUMBER OF EACH ROOM TO BE THE BUILDING NUMBER.
EXAMPLE - BUILDING 3 ROOMS SHOULD READ 303, 304, 305 ETC;
BUILDING 15 ROOMS SHOULD READ 1503, 1504, 1505 ETC.

E4 NUMBERING PLAN - LARGE BUILDING - 2ND FLOOR
1/8" = 1'-0"

APT NUMBER	FLOOR	TYPE	NAME	DESCRIPTION	LOCATION	SQ FT	PRICE	RESERVED
1110	2ND	Type B	Canal	2 Bed/ x2 Bath	Inline	935	2275	
1111	2ND	Type A	Glacier	2 Bed/ x2 Bath	Corner	1015	2350	
1112	2ND	Type A	Glacier	2 Bed/ x2 Bath	Corner	1015	2350	
1113	2ND	Type B	Canal	2 Bed/ x2 Bath	Inline	935	2275	
1114	2ND	Type B	Canal	2 Bed/ x2 Bath	Inline	935	2275	
1115	2ND	Type B	Canal	2 Bed/ x2 Bath	Inline	935	2275	
1116	2ND	Type A	Glacier	2 Bed/ x2 Bath	Corner	1015	2350	
1117	2ND	Type A	Glacier	2 Bed/ x2 Bath	Corner	1015	2350	
1118	2ND	Type C	River	1 Bed/ x1 Bath	Inline	750	1850	

Building 11 – 3rd Floor

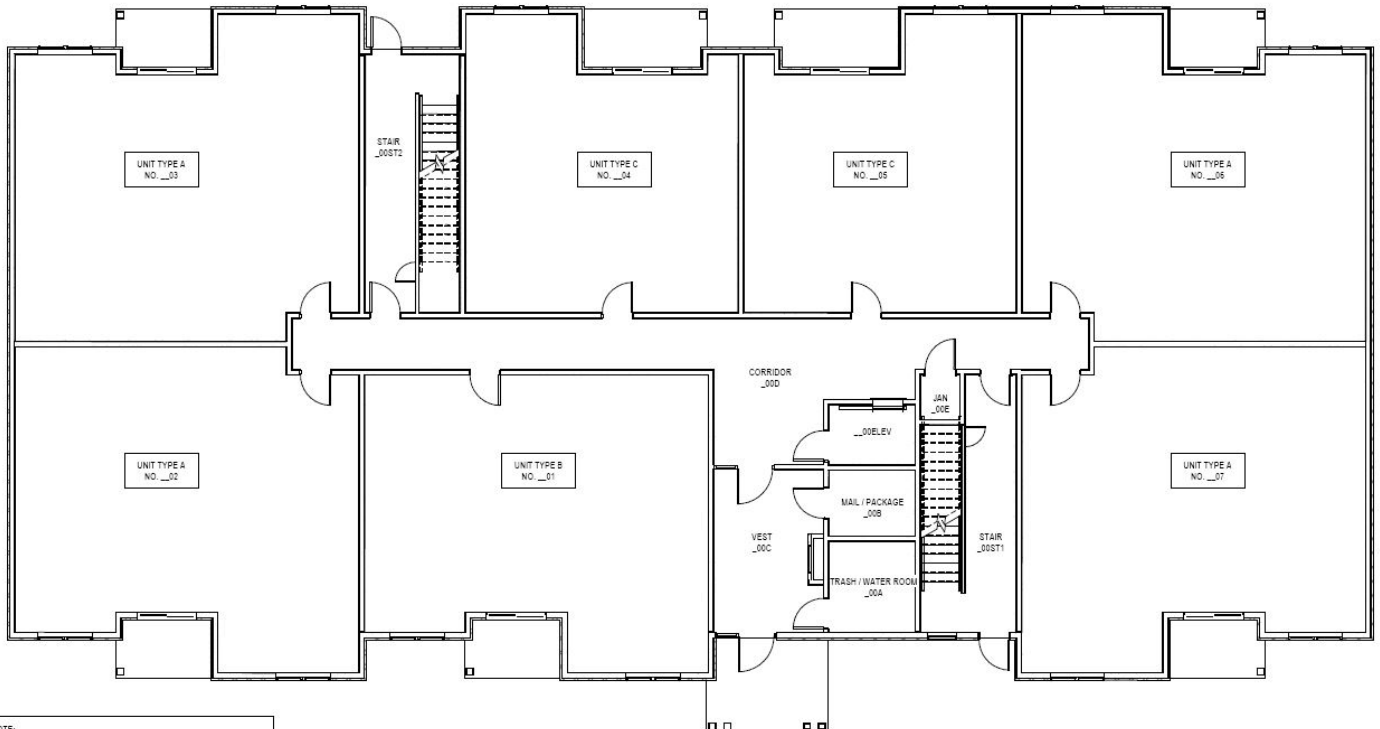


NOTE:
FIRST NUMBER OF EACH ROOM TO BE THE BUILDING NUMBER.
EXAMPLE - BUILDING 3 ROOMS SHOULD READ 303, 304, 305 ETC.
BUILDING 15 ROOMS SHOULD READ 1503, 1504, 1505 ETC.

A4 NUMBERING PLAN - LARGE BUILDING - 3RD FLOOR
1/8" = 1'-0"

APT NUMBER	FLOOR	TYPE	NAME	DESCRIPTION	LOCATION	SQ FT	PRICE	RESERVED
1119	3RD	Type B	Canal	2 Bed/ x2 Bath	Inline	935	2310	
1120	3RD	Type A2		2 Bed/ x2 Bath	Corner	1050	2525	
1121	3RD	Type A	Glacier	2 Bed/ x2 Bath	Corner	1015	2435	
1122	3RD	Type B	Canal	2 Bed/ x2 Bath	Inline	935	2310	
1123	3RD	Type B	Canal	2 Bed/ x2 Bath	Inline	935	2310	
1124	3RD	Type B	Canal	2 Bed/ x2 Bath	Inline	935	2310	
1125	3RD	Type A	Glacier	2 Bed/ x2 Bath	Corner	1015	2435	
1126	3RD	Type A2		2 Bed/ x2 Bath	Corner	1050	2525	
1127	3RD	Type C	River	1 Bed/ x1 Bath	Inline	750	1935	

Building 13– 1st Floor



NOTE:
FIRST NUMBER OF EACH ROOM TO BE THE BUILDING NUMBER.
EXAMPLE - BUILDING 3 ROOMS SHOULD READ 303, 304, 305 ETC;
BUILDING 15 ROOMS SHOULD READ 1503, 1504, 1505 ETC.

A5 NUMBERING PLAN - MEDIUM BUILDING - 1ST FLOOR
1/8" = 1'-0"

APT NUMBER	FLOOR	TYPE	NAME	DESCRIPTION	LOCATION	SQ FT	PRICE	RESERVED
1301	1ST	Type B	Canal	2 Bed/ x2 Bath	Inline	935	2275	
1302	1ST	Type A	Glacier	2 Bed/ x2 Bath	Corner	1015	2350	
1303	1ST	Type A	Glacier	2 Bed/ x2 Bath	Corner	1015	2350	
1304	1ST	Type C	River	1 Bed/ x1 Bath	Inline	750	1850	
1305	1ST	Type C	River	1 Bed/ x1 Bath	Inline	750	1850	
1306	1ST	Type A	Glacier	2 Bed/ x2 Bath	Corner	1015	2350	
1307	1ST	Type A	Glacier	2 Bed/ x2 Bath	Corner	1015	2350	

Building 13– 2nd Floor

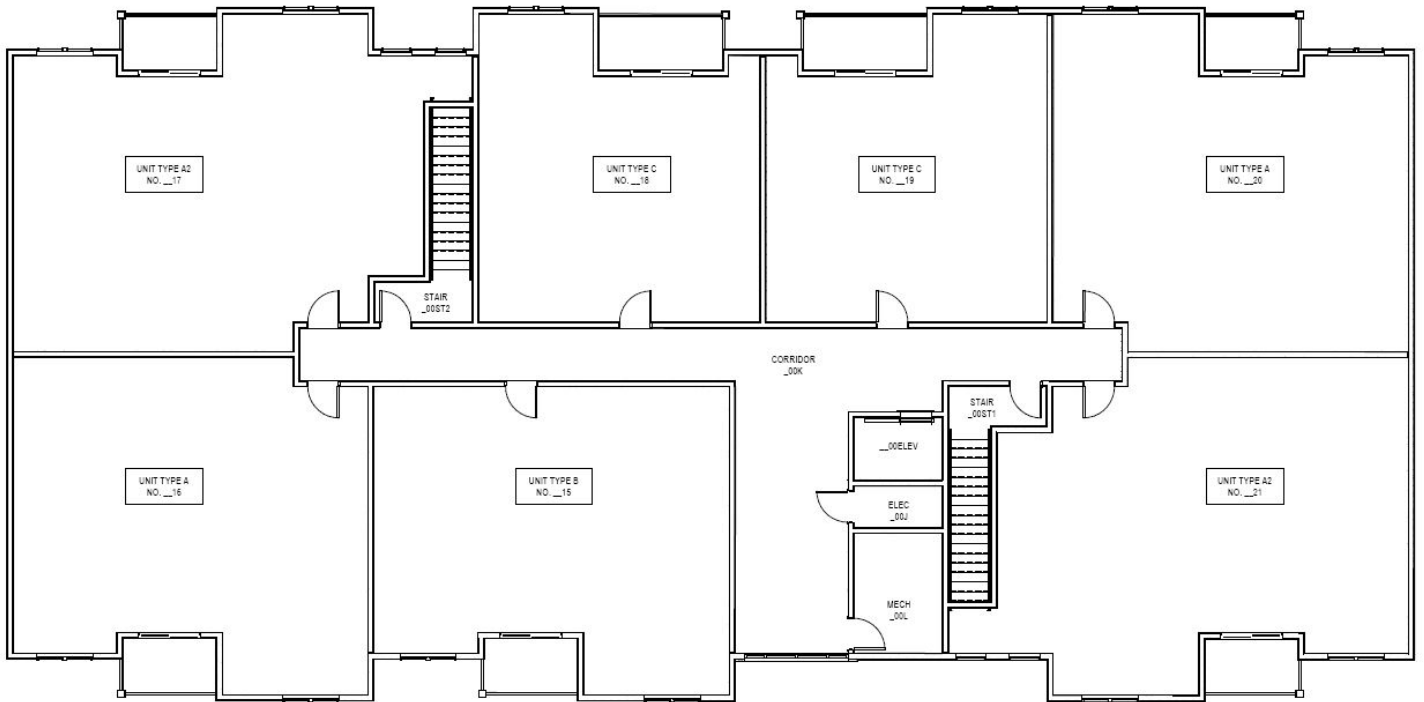


NOTE:
FIRST NUMBER OF EACH ROOM TO BE THE BUILDING NUMBER.
EXAMPLE - BUILDING 3 ROOMS SHOULD READ 303, 304, 305 ETC;
BUILDING 15 ROOMS SHOULD READ 1503, 1504, 1505 ETC.

E5 NUMBERING PLAN - MEDIUM BUILDING - 2ND FLOOR
1/8" = 1'-0"

APT NUMBER	FLOOR	TYPE	NAME	DESCRIPTION	LOCATION	SQ FT	PRICE	RESERVED
1308	2ND	Type B	Canal	2 Bed/ x2 Bath	Inline	935	2275	
1309	2ND	Type A	Glacier	2 Bed/ x2 Bath	Corner	1015	2350	
1310	2ND	Type A	Glacier	2 Bed/ x2 Bath	Corner	1015	2350	
1311	2ND	Type C	River	1 Bed/ x1 Bath	Inline	750	1850	
1312	2ND	Type C	River	1 Bed/ x1 Bath	Inline	750	1850	
1313	2ND	Type A	Glacier	2 Bed/ x2 Bath	Corner	1015	2350	
1314	2ND	Type A	Glacier	2 Bed/ x2 Bath	Corner	1015	2350	

Building 13– 3rd Floor

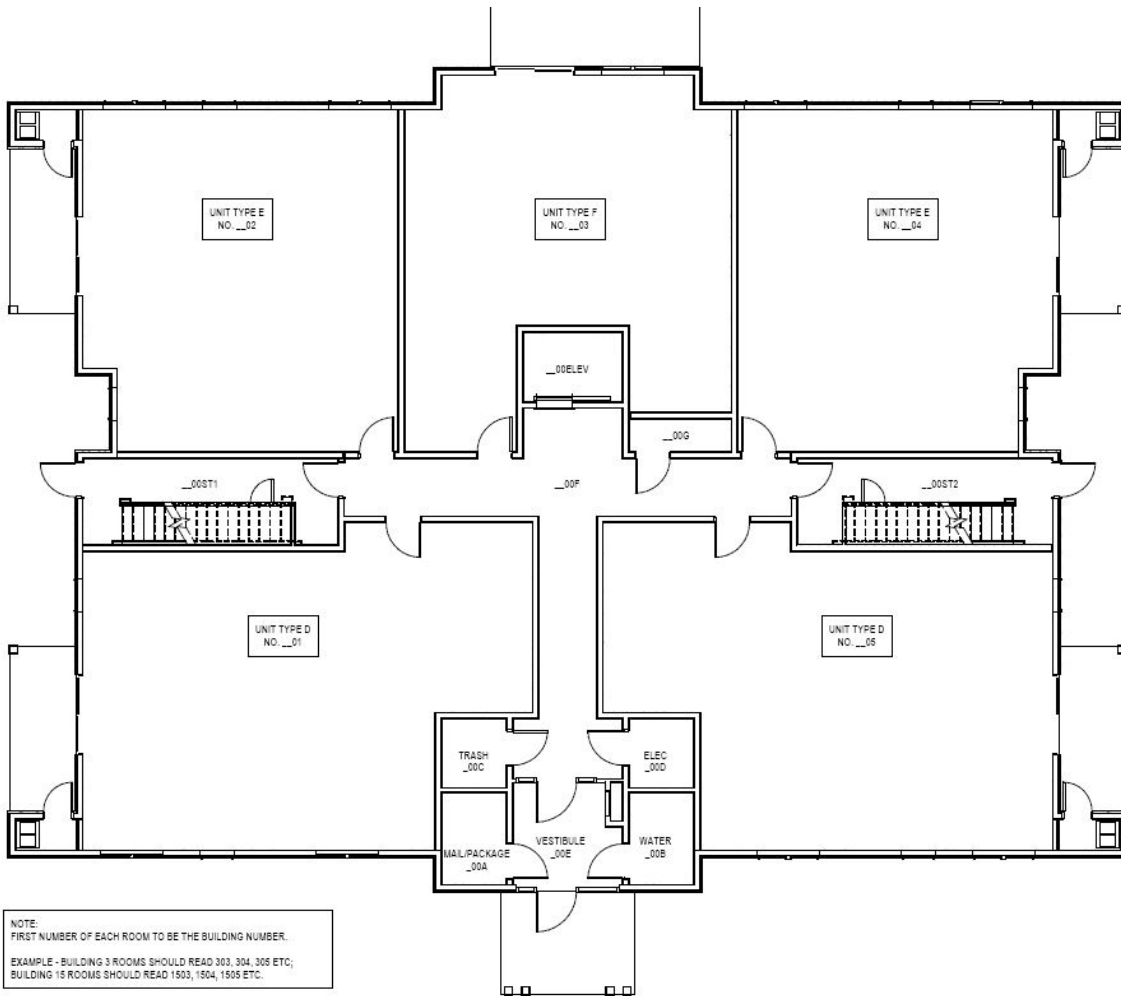


NOTE:
FIRST NUMBER OF EACH ROOM TO BE THE BUILDING NUMBER.
EXAMPLE - BUILDING 3 ROOMS SHOULD READ 303, 304, 305 ETC.;
BUILDING 15 ROOMS SHOULD READ 1503, 1504, 1505 ETC.

E5 NUMBERING PLAN - MEDIUM BUILDING - 3RD FLOOR
1/8" = 1'-0"

APT NUMBER	FLOOR	TYPE	NAME	DESCRIPTION	LOCATION	SQ FT	PRICE	RESERVED
1315	3RD	Type B	Canal	2 Bed/ x2 Bath	Inline	935	2310	
1316	3RD	Type A	Glacier	2 Bed/ x2 Bath	Corner	1050	2435	
1317	3RD	Type A2		2 Bed/ x2 Bath	Corner	1015	2525	
1318	3RD	Type C	River	1 Bed/ x1 Bath	Inline	750	1935	
1319	3RD	Type C	River	1 Bed/ x1 Bath	Inline	750	1935	
1320	3RD	Type A	Glacier	2 Bed/ x2 Bath	Corner	1015	2435	
1321	3RD	Type A2		2 Bed/ x2 Bath	Corner	1050	2525	

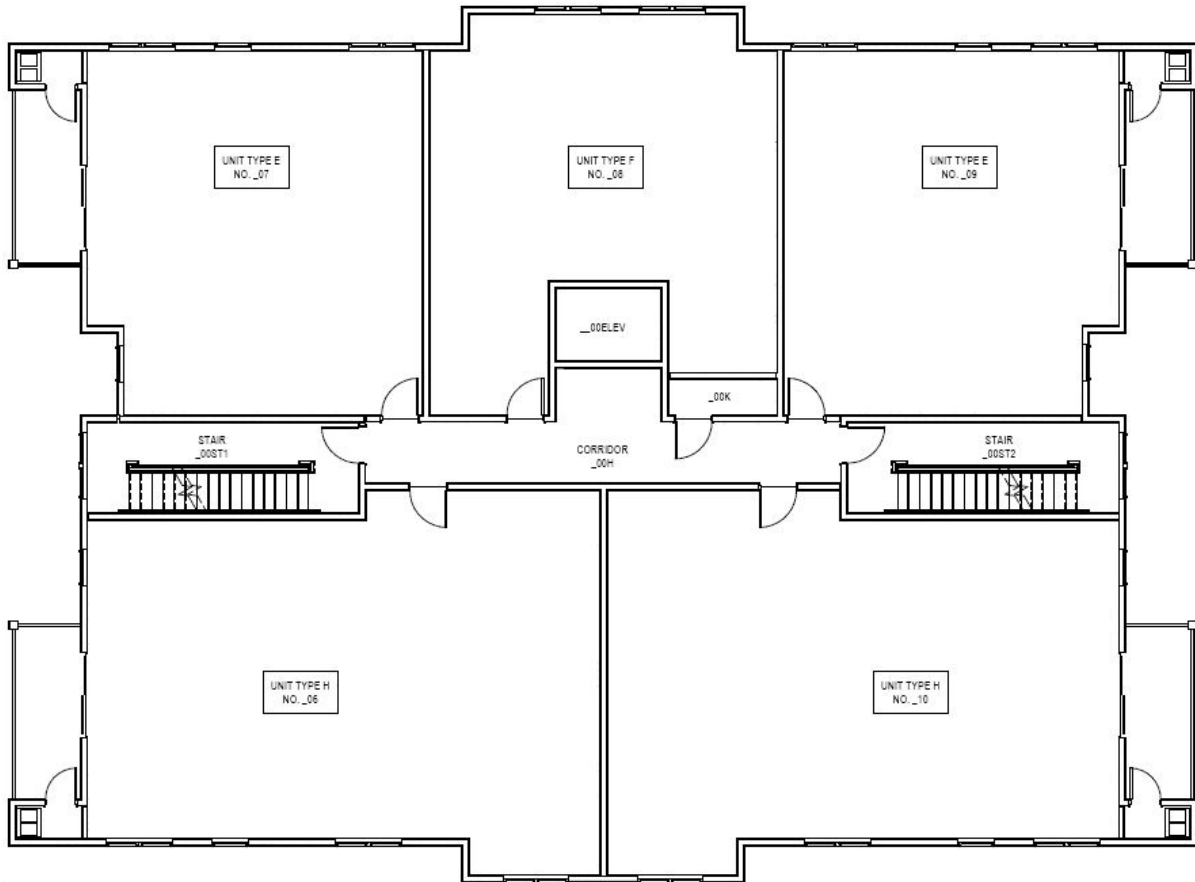
Building 15 – 1st Floor



A6 NUMBERING PLAN - SMALL BUILDING - 1ST FLOOR
1/8" = 1'-0"

APT NUMBER	FLOOR	TYPE	NAME	DESCRIPTION	LOCATION	SQ FT	PRICE	RESERVED
1501	1ST	Type D	Shore	1 Bed/ x1 Bath	Corner	970	2310	
1502	1ST	Type E	Creek	1 Bed/ x1 Bath	Corner	935	2200	
1503	1ST	Type F	Bay	1 Bed/ x1 Bath	Inline	825	2100	
1504	1ST	Type E	Creek	1 Bed/ x1 Bath	Corner	935	2200	
1505	1ST	Type D	Shore	1 Bed/ x1 Bath	Corner	970	2310	

Building 15 – 2nd Floor

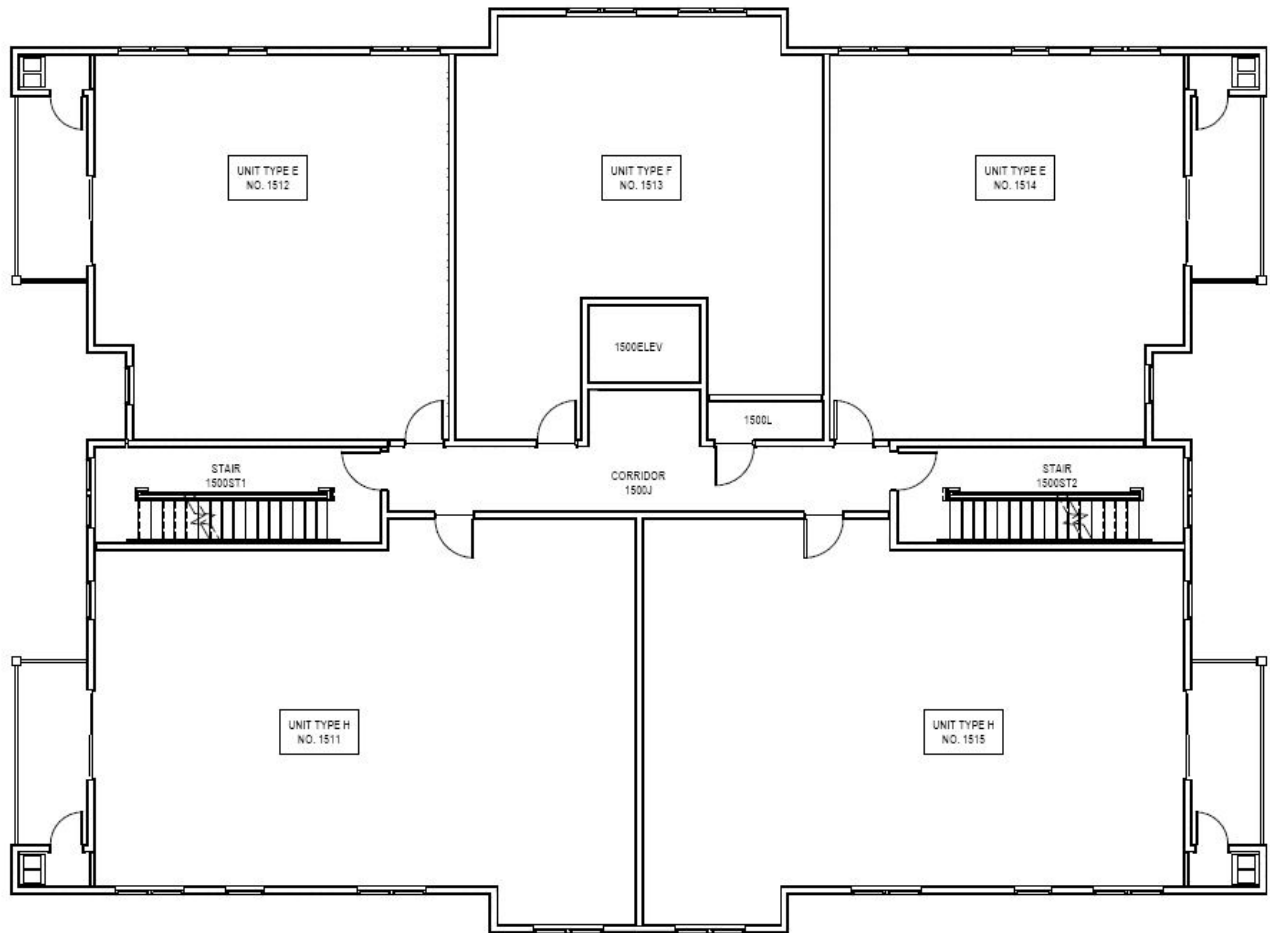


NOTE:
FIRST NUMBER OF EACH ROOM TO BE THE BUILDING NUMBER.
EXAMPLE - BUILDING 3 ROOMS SHOULD READ 303, 304, 305 ETC;
BUILDING 15 ROOMS SHOULD READ 1503, 1504, 1505 ETC.

F6 NUMBERING PLAN - SMALL BUILDING - 2ND FLOOR
1/8" = 1'-0"

APT NUMBER	FLOOR	TYPE	NAME	DESCRIPTION	LOCATION	SQ FT	PRICE	RESERVED
1506	2ND	Type H	Island	2 Bed/ x2 Bath	Corner	1342	2750	
1507	2ND	Type E	Creek	1 Bed/ x1 Bath	Corner	935	2200	
1508	2ND	Type F	Bay	1 Bed/ x1 Bath	Inline	825	2100	
1509	2ND	Type E	Creek	1 Bed/ x1 Bath	Corner	935	2200	
1510	2ND	Type H	Island	2 Bed/ x2 Bath	Corner	1342	2750	

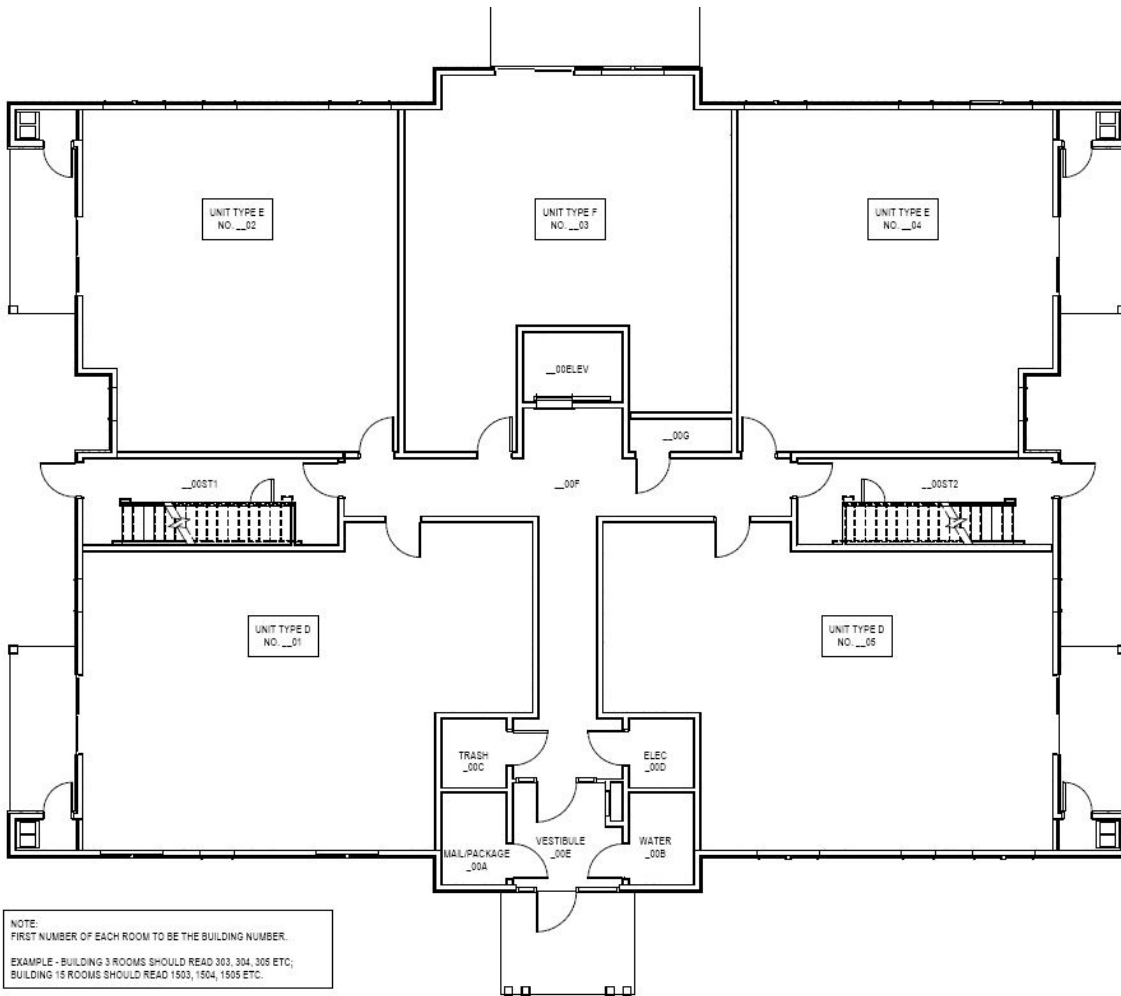
Building 15 – 3rd Floor



F2 NUMBERING PLAN - SMALL BUILDING 15 - 3RD FLOOR
1/8" = 1'-0"

APT NUMBER	FLOOR	TYPE	NAME	DESCRIPTION	LOCATION	SQ FT	PRICE	RESERVED
1511	3RD	Type H	Island	2 Bed/ x2 Bath	Corner	1342	2800	
1512	3RD	Type E	Creek	1 Bed/ x1 Bath	Corner	935	2250	
1513	3RD	Type F	Bay	1 Bed/ x1 Bath	Inline	825	2175	
1514	3RD	Type E	Creek	1 Bed/ x1 Bath	Corner	935	2250	
1515	3RD	Type H	Island	2 Bed/ x2 Bath	Corner	1342	2800	

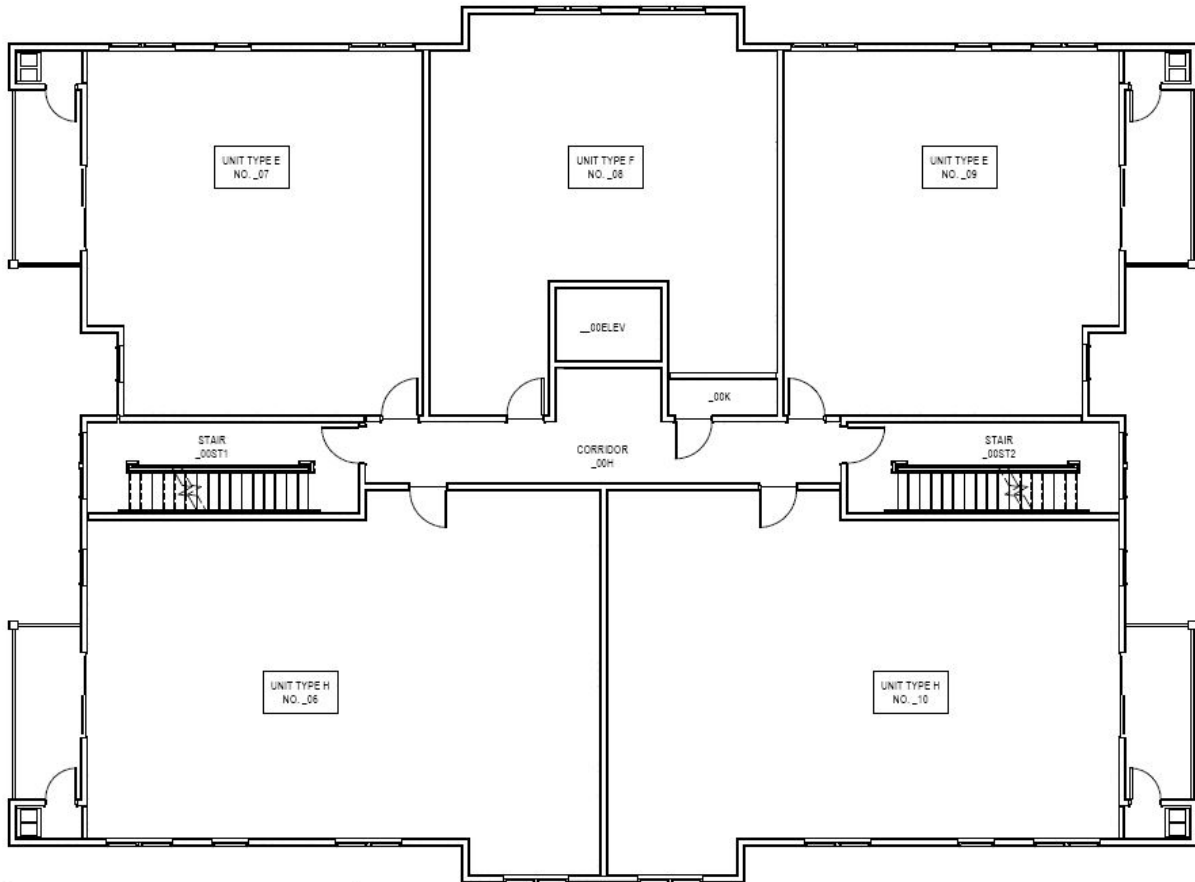
Building 16 – 1st Floor



A6 NUMBERING PLAN - SMALL BUILDING - 1ST FLOOR
1/8" = 1'-0"

APT NUMBER	FLOOR	TYPE	NAME	DESCRIPTION	LOCATION	SQ FT	PRICE	RESERVED
1601	1ST	Type D	Shore	1 Bed/ x1 Bath	Corner	970	2350	
1602	1ST	Type E	Creek	1 Bed/ x1 Bath	Corner	935	2250	
1603	1ST	Type F	Bay	1 Bed/ x1 Bath	Inline	825	2150	
1604	1ST	Type E	Creek	1 Bed/ x1 Bath	Corner	935	2250	
1605	1ST	Type D	Shore	1 Bed/ x1 Bath	Corner	970	2350	

Building 16 – 2nd Floor

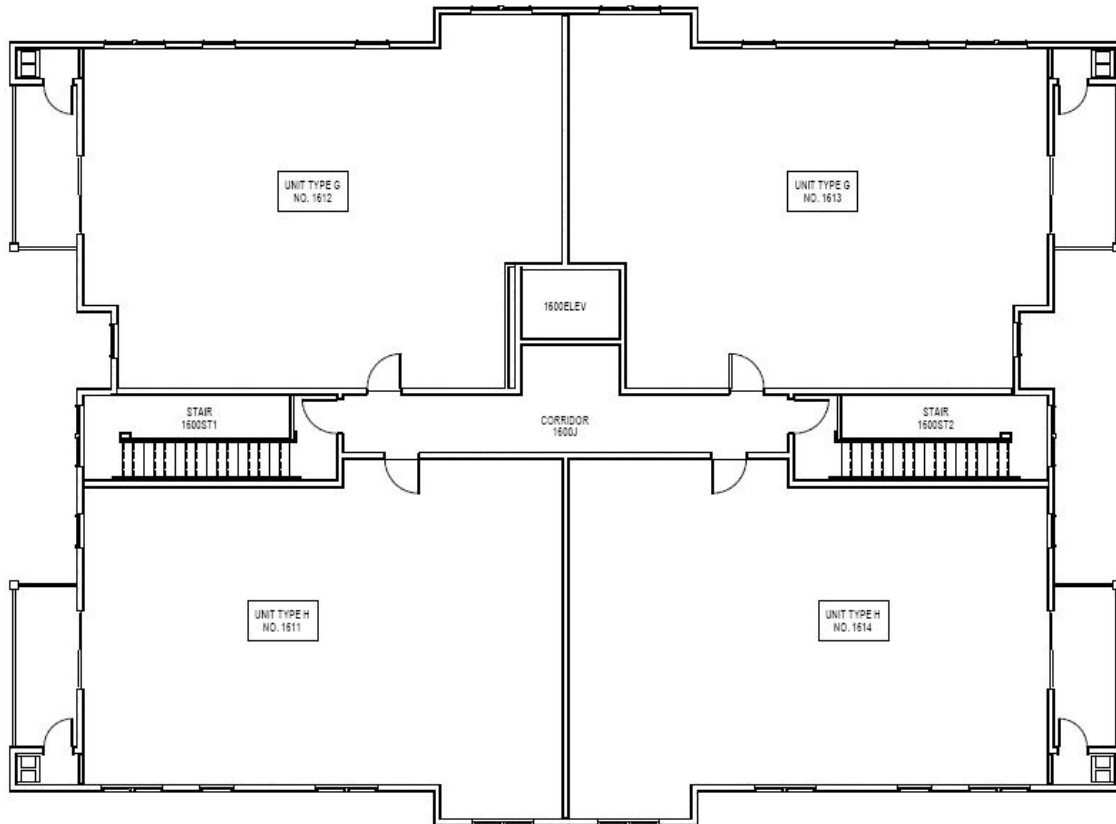


NOTE:
FIRST NUMBER OF EACH ROOM TO BE THE BUILDING NUMBER.
EXAMPLE - BUILDING 3 ROOMS SHOULD READ 303, 304, 305 ETC;
BUILDING 15 ROOMS SHOULD READ 1503, 1504, 1505 ETC.

F6 NUMBERING PLAN - SMALL BUILDING - 2ND FLOOR
1/8" = 1'-0"

APT NUMBER	FLOOR	TYPE	NAME	DESCRIPTION	LOCATION	SQ FT	PRICE	RESERVED
1606	2ND	Type H	Island	2 Bed/ x2 Bath	Corner	1342	2850	
1607	2ND	Type E	Creek	1 Bed/ x1 Bath	Corner	935	2250	
1608	2ND	Type F	Bay	1 Bed/ x1 Bath	Inline	825	2150	
1609	2ND	Type E	Creek	1 Bed/ x1 Bath	Corner	935	2250	
1610	2ND	Type H	Island	2 Bed/ x2 Bath	Corner	1342	2850	

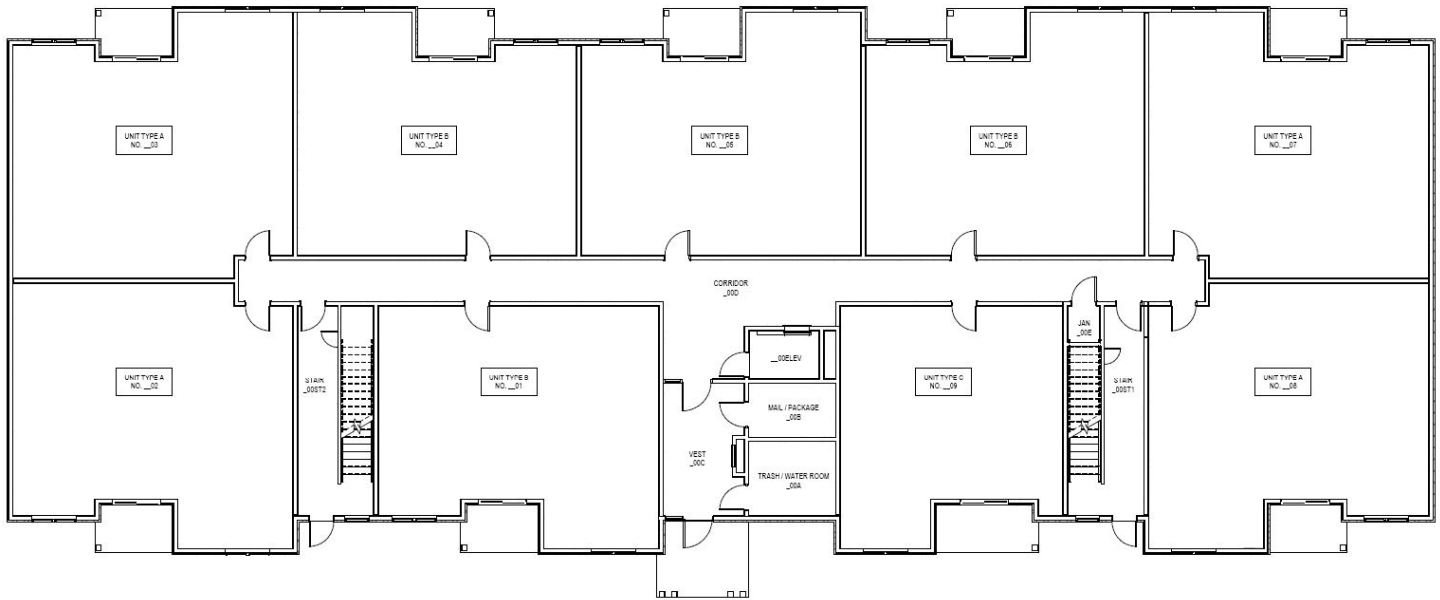
Building 16 – 3rd Floor



A2 NUMBERING PLAN - SMALL BUILDING 16 - 3RD FLOOR
1/8" = 1'-0"

APT NUMBER	FLOOR	TYPE	NAME	DESCRIPTION	LOCATION	SQ FT	PRICE	RESERVED
1611	3RD	Type H	Island	2 Bed/ x2 Bath	Corner	1342	2900	
1612	3RD	Type G	Waterway	2 Bed/ x2 Bath	Corner	1372	2995	
1613	3RD	Type G	Waterway	2 Bed/ x2 Bath	Corner	1372	2995	
1614	3RD	Type H	Island	2 Bed/ x2 Bath	Corner	1342	2900	

Building 17 – 1st Floor



NOTE:
FIRST NUMBER OF EACH ROOM TO BE THE BUILDING NUMBER.
EXAMPLE - BUILDING 3 ROOMS SHOULD READ 303, 304, 309 ETC;
BUILDING 15 ROOMS SHOULD READ 1503, 1504, 1509 ETC.

APT NUMBER	FLOOR	TYPE	NAME	DESCRIPTION	LOCATION	SQ FT	PRICE	RESERVED
1701	1ST	Type B	Canal	2 Bed/ x2 Bath	Inline	935	2310	
1702	1ST	Type A	Glacier	2 Bed/ x2 Bath	Corner	1015	2435	
1703	1ST	Type A	Glacier	2 Bed/ x2 Bath	Corner	1015	2435	
1704	1ST	Type B	Canal	2 Bed/ x2 Bath	Inline	935	2310	
1705	1ST	Type B	Canal	2 Bed/ x2 Bath	Inline	935	2310	
1706	1ST	Type B	Canal	2 Bed/ x2 Bath	Inline	935	2310	
1707	1ST	Type A	Glacier	2 Bed/ x2 Bath	Corner	1015	2435	
1708	1ST	Type A	Glacier	2 Bed/ x2 Bath	Corner	1015	2435	
1709	1ST	Type C	River	1 Bed/ x1 Bath	Inline	750	1935	

Building 17 – 2nd Floor

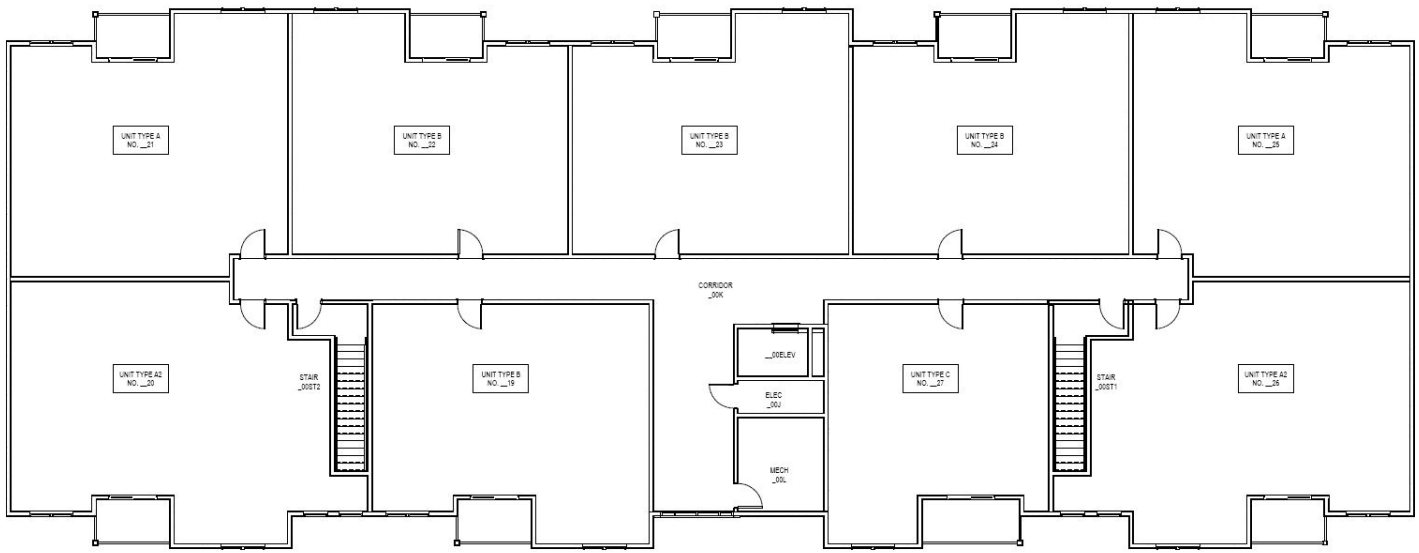


NOTE:
FIRST NUMBER OF EACH ROOM TO BE THE BUILDING NUMBER.
EXAMPLE - BUILDING 3 ROOMS SHOULD READ 303, 304, 305 ETC;
BUILDING 15 ROOMS SHOULD READ 1503, 1504, 1505 ETC.

E4 NUMBERING PLAN - LARGE BUILDING - 2ND FLOOR
1/8" = 1'-0"

APT NUMBER	FLOOR	TYPE	NAME	DESCRIPTION	LOCATION	SQ FT	PRICE	RESERVED
1710	2ND	Type B	Canal	2 Bed/ x2 Bath	Inline	935	2310	
1711	2ND	Type A	Glacier	2 Bed/ x2 Bath	Corner	1015	2435	
1712	2ND	Type A	Glacier	2 Bed/ x2 Bath	Corner	1015	2435	
1713	2ND	Type B	Canal	2 Bed/ x2 Bath	Inline	935	2310	
1714	2ND	Type B	Canal	2 Bed/ x2 Bath	Inline	935	2310	
1715	2ND	Type B	Canal	2 Bed/ x2 Bath	Inline	935	2310	
1716	2ND	Type A	Glacier	2 Bed/ x2 Bath	Corner	1015	2435	
1717	2ND	Type A	Glacier	2 Bed/ x2 Bath	Corner	1015	2435	
1718	2ND	Type C	River	1 Bed/ x1 Bath	Inline	750	1935	

Building 17 – 3rd Floor

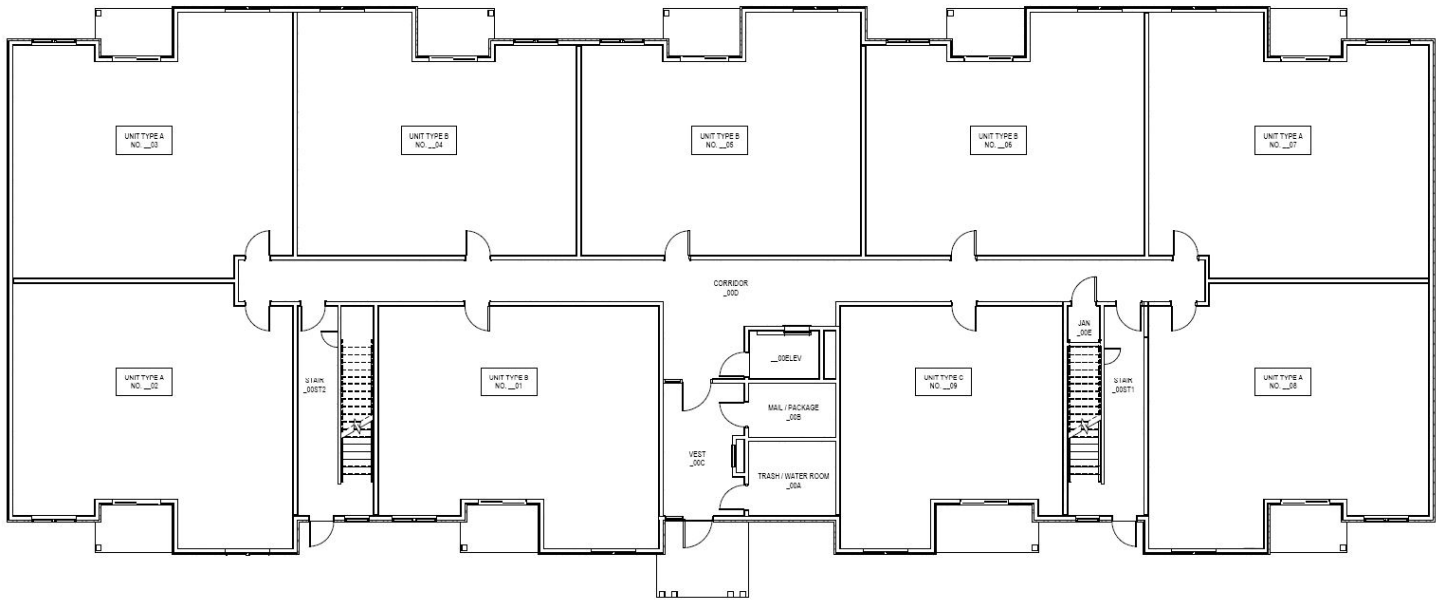


NOTE:
FIRST NUMBER OF EACH ROOM TO BE THE BUILDING NUMBER.
EXAMPLE - BUILDING 3 ROOMS SHOULD READ 303, 304, 305 ETC.
BUILDING 15 ROOMS SHOULD READ 1503, 1504, 1505 ETC.

A4 NUMBERING PLAN - LARGE BUILDING - 3RD FLOOR
1/8" = 1'-0"

APT NUMBER	FLOOR	TYPE	NAME	DESCRIPTION	LOCATION	SQ FT	PRICE	RESERVED
1719	3RD	Type B	Canal	2 Bed/ x2 Bath	Inline	935	2395	
1720	3RD	Type A2		2 Bed/ x2 Bath	Corner	1050	2625	
1721	3RD	Type A	Glacier	2 Bed/ x2 Bath	Corner	1015	2525	
1722	3RD	Type B	Canal	2 Bed/ x2 Bath	Inline	935	2395	
1723	3RD	Type B	Canal	2 Bed/ x2 Bath	Inline	935	2395	
1724	3RD	Type B	Canal	2 Bed/ x2 Bath	Inline	935	2395	
1725	3RD	Type A	Glacier	2 Bed/ x2 Bath	Corner	1015	2525	
1726	3RD	Type A2		2 Bed/ x2 Bath	Corner	1050	2625	
1727	3RD	Type C	River	1 Bed/ x1 Bath	Inline	750	1995	

Building 19 – 1st Floor

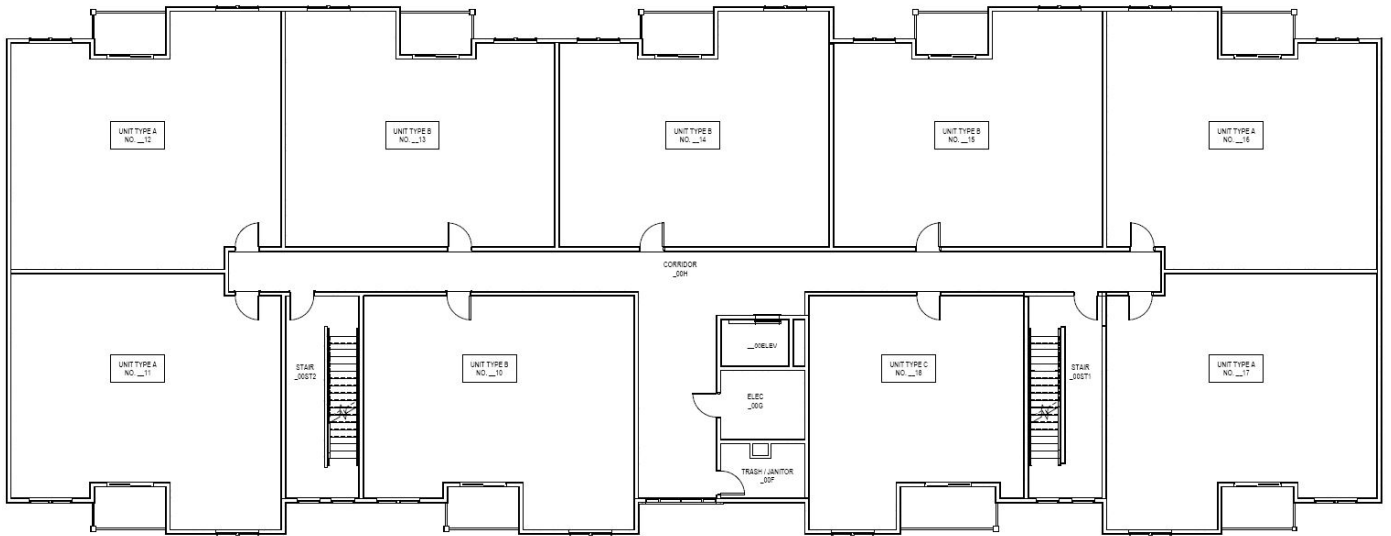


NOTE:
FIRST NUMBER OF EACH ROOM TO BE THE BUILDING NUMBER.
EXAMPLE - BUILDING 3 ROOMS SHOULD READ 303, 304, 309 ETC;
BUILDING 15 ROOMS SHOULD READ 1503, 1504, 1509 ETC.

A4 NUMBERING PLAN - LARGE BUILDING - 1ST FLOOR
1/8" = 1'-0"

APT NUMBER	FLOOR	TYPE	NAME	DESCRIPTION	LOCATION	SQ FT	PRICE	RESERVED
1901	1ST	Type B	Canal	2 Bed/ x2 Bath	Inline	935	2275	
1902	1ST	Type A	Glacier	2 Bed/ x2 Bath	Corner	1015	2350	
1903	1ST	Type A	Glacier	2 Bed/ x2 Bath	Corner	1015	2350	
1904	1ST	Type B	Canal	2 Bed/ x2 Bath	Inline	935	2275	
1905	1ST	Type B	Canal	2 Bed/ x2 Bath	Inline	935	2275	
1906	1ST	Type B	Canal	2 Bed/ x2 Bath	Inline	935	2275	
1907	1ST	Type A	Glacier	2 Bed/ x2 Bath	Corner	1015	2350	
1908	1ST	Type A	Glacier	2 Bed/ x2 Bath	Corner	1015	2350	
1909	1ST	Type C	River	1 Bed/ x1 Bath	Inline	750	1850	

Building 19 – 2nd Floor

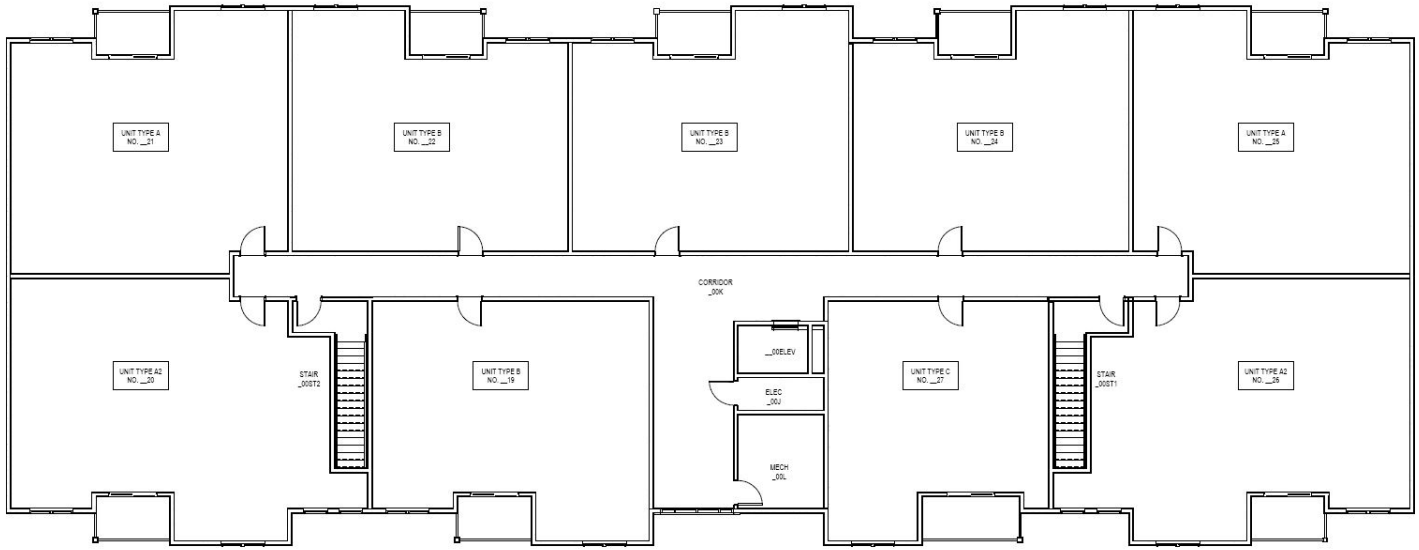


NOTE:
FIRST NUMBER OF EACH ROOM TO BE THE BUILDING NUMBER.
EXAMPLE - BUILDING 3 ROOMS SHOULD READ 303, 304, 305 ETC;
BUILDING 15 ROOMS SHOULD READ 1503, 1504, 1505 ETC.

E4 NUMBERING PLAN - LARGE BUILDING - 2ND FLOOR
1/8" = 1'-0"

APT NUMBER	FLOOR	TYPE	NAME	DESCRIPTION	LOCATION	SQ FT	PRICE	RESERVED
1910	2ND	Type B	Canal	2 Bed/ x2 Bath	Inline	935	2275	
1911	2ND	Type A	Glacier	2 Bed/ x2 Bath	Corner	1015	2350	
1912	2ND	Type A	Glacier	2 Bed/ x2 Bath	Corner	1015	2350	
1913	2ND	Type B	Canal	2 Bed/ x2 Bath	Inline	935	2275	
1914	2ND	Type B	Canal	2 Bed/ x2 Bath	Inline	935	2275	
1915	2ND	Type B	Canal	2 Bed/ x2 Bath	Inline	935	2275	
1916	2ND	Type A	Glacier	2 Bed/ x2 Bath	Corner	1015	2350	
1917	2ND	Type A	Glacier	2 Bed/ x2 Bath	Corner	1015	2350	
1918	2ND	Type C	River	1 Bed/ x1 Bath	Inline	750	1850	

Building 19 – 3rd Floor

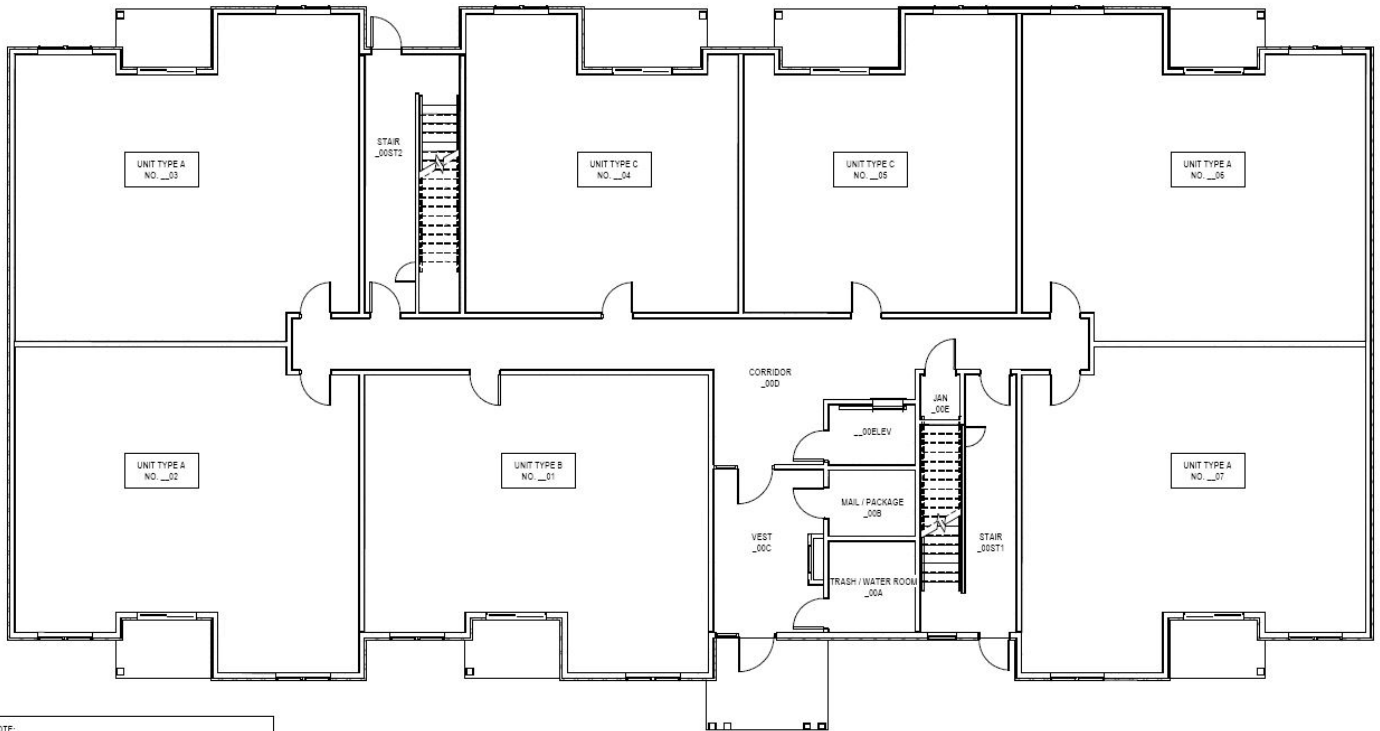


NOTE:
FIRST NUMBER OF EACH ROOM TO BE THE BUILDING NUMBER.
EXAMPLE - BUILDING 3 ROOMS SHOULD READ 303, 304, 305 ETC.
BUILDING 15 ROOMS SHOULD READ 1503, 1504, 1505 ETC.

A4 NUMBERING PLAN - LARGE BUILDING - 3RD FLOOR
1/8" = 1'-0"

APT NUMBER	FLOOR	TYPE	NAME	DESCRIPTION	LOCATION	SQ FT	PRICE	RESERVED
1919	3RD	Type B	Canal	2 Bed/ x2 Bath	Inline	935	2	
1920	3RD	Type A2		2 Bed/ x2 Bath	Corner	1050	2525	
1921	3RD	Type A	Glacier	2 Bed/ x2 Bath	Corner	1015	2435	
1922	3RD	Type B	Canal	2 Bed/ x2 Bath	Inline	935	23	
1923	3RD	Type B	Canal	2 Bed/ x2 Bath	Inline	935	23	
1924	3RD	Type B	Canal	2 Bed/ x2 Bath	Inline	935	23	
1925	3RD	Type A	Glacier	2 Bed/ x2 Bath	Corner	1015	2435	
1926	3RD	Type A2		2 Bed/ x2 Bath	Corner	1050	2525	
1927	3RD	Type C	River	1 Bed/ x1 Bath	Inline	750	1935	

Building 21– 1st Floor



NOTE:
FIRST NUMBER OF EACH ROOM TO BE THE BUILDING NUMBER.
EXAMPLE - BUILDING 3 ROOMS SHOULD READ 303, 304, 305 ETC;
BUILDING 15 ROOMS SHOULD READ 1503, 1504, 1505 ETC.

A5 NUMBERING PLAN - MEDIUM BUILDING - 1ST FLOOR
1/8" = 1'-0"

APT NUMBER	FLOOR	TYPE	NAME	DESCRIPTION	LOCATION	SQ FT	PRICE	RESERVED
2101	1ST	Type B	Canal	2 Bed/ x2 Bath	Inline	935	2310	
2102	1ST	Type A	Glacier	2 Bed/ x2 Bath	Corner	1015	2435	
2103	1ST	Type A	Glacier	2 Bed/ x2 Bath	Corner	1015	2435	
2104	1ST	Type C	River	1 Bed/ x1 Bath	Inline	750	1935	
2105	1ST	Type C	River	1 Bed/ x1 Bath	Inline	750	1935	
2106	1ST	Type A	Glacier	2 Bed/ x2 Bath	Corner	1015	2435	
2107	1ST	Type A	Glacier	2 Bed/ x2 Bath	Corner	1015	2435	

Building 21– 2nd Floor

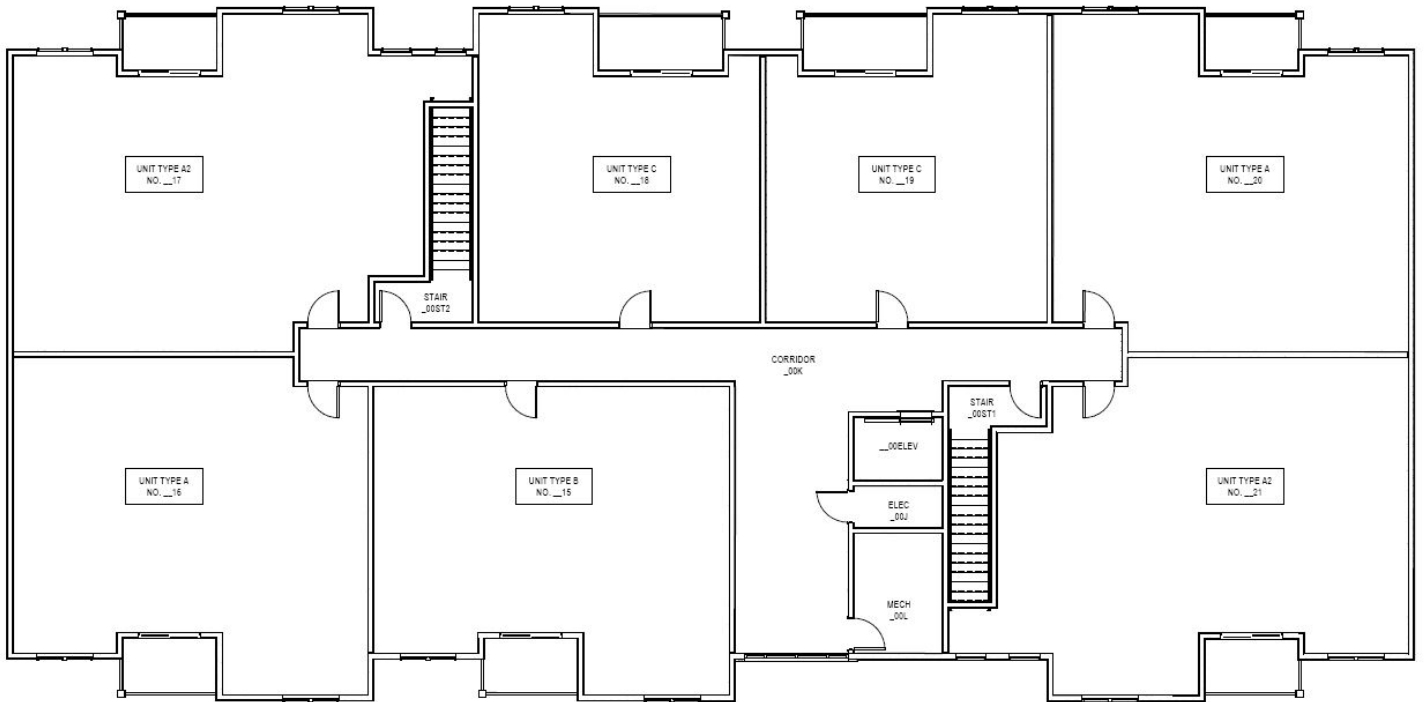


NOTE:
FIRST NUMBER OF EACH ROOM TO BE THE BUILDING NUMBER.
EXAMPLE - BUILDING 3 ROOMS SHOULD READ 303, 304, 305 ETC;
BUILDING 15 ROOMS SHOULD READ 1503, 1504, 1505 ETC.

E5 NUMBERING PLAN - MEDIUM BUILDING - 2ND FLOOR
1/8" = 1'-0"

APT NUMBER	FLOOR	TYPE	NAME	DESCRIPTION	LOCATION	SQ FT	PRICE	RESERVED
2108	2ND	Type B	Canal	2 Bed/ x2 Bath	Inline	935	2310	
2109	2ND	Type A	Glacier	2 Bed/ x2 Bath	Corner	1015	2435	
2110	2ND	Type A	Glacier	2 Bed/ x2 Bath	Corner	1015	2435	
2111	2ND	Type C	River	1 Bed/ x1 Bath	Inline	750	1935	
2112	2ND	Type C	River	1 Bed/ x1 Bath	Inline	750	1935	
2113	2ND	Type A	Glacier	2 Bed/ x2 Bath	Corner	1015	2435	
2114	2ND	Type A	Glacier	2 Bed/ x2 Bath	Corner	1015	2435	

Building 21– 3rd Floor

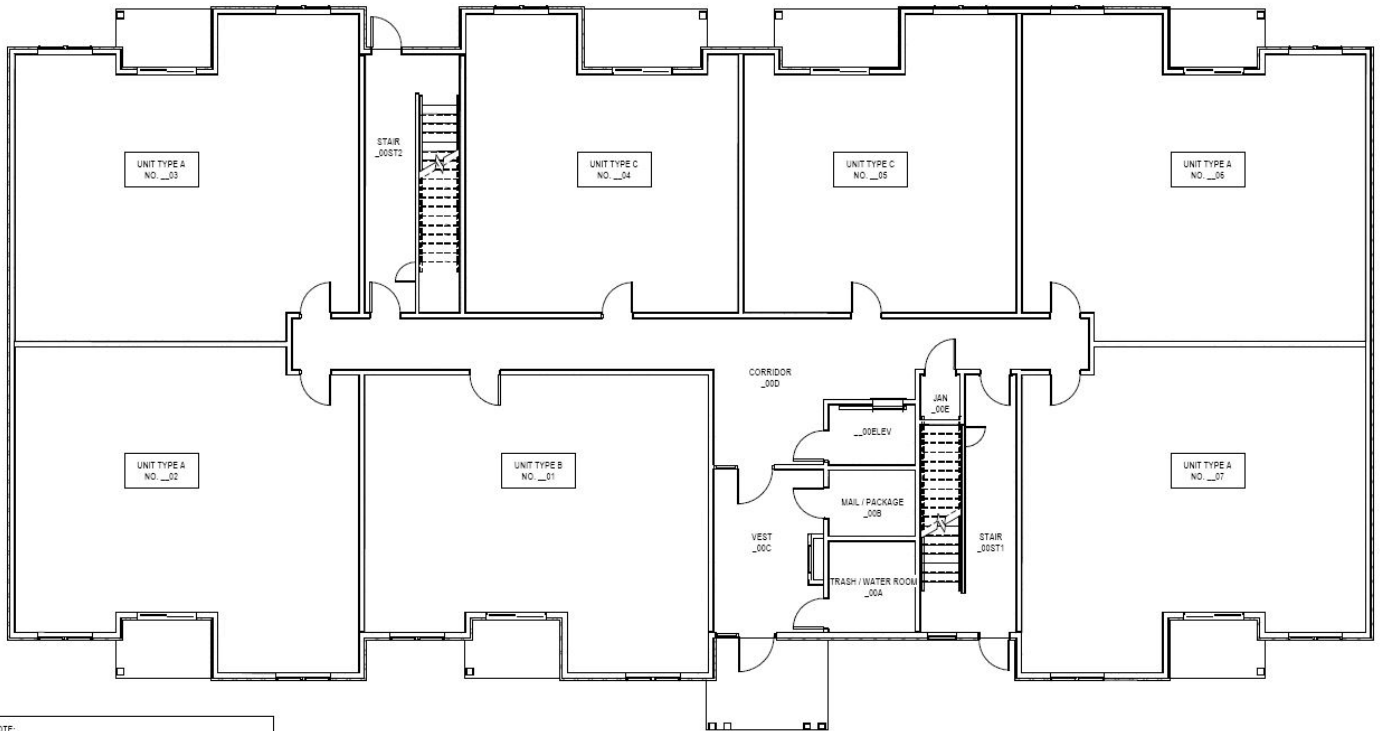


NOTE:
FIRST NUMBER OF EACH ROOM TO BE THE BUILDING NUMBER.
EXAMPLE - BUILDING 3 ROOMS SHOULD READ 303, 304, 305 ETC.
BUILDING 15 ROOMS SHOULD READ 1503, 1504, 1505 ETC.

E5 NUMBERING PLAN - MEDIUM BUILDING - 3RD FLOOR
1/8" = 1'-0"

APT NUMBER	FLOOR	TYPE	NAME	DESCRIPTION	LOCATION	SQ FT	PRICE	RESERVED
2115	3RD	Type B	Canal	2 Bed/ x2 Bath	Inline	935	2395	
2116	3RD	Type A	Glacier	2 Bed/ x2 Bath	Corner	1015	2525	
2117	3RD	Type A2		2 Bed/ x2 Bath	Corner	1050	2600	
2118	3RD	Type C	River	1 Bed/ x1 Bath	Inline	750	1995	
2119	3RD	Type C	River	1 Bed/ x1 Bath	Inline	750	1995	
2120	3RD	Type A	Glacier	2 Bed/ x2 Bath	Corner	1015	2525	
2121	3RD	Type A2		2 Bed/ x2 Bath	Corner	1050	2600	

Building 23– 1st Floor

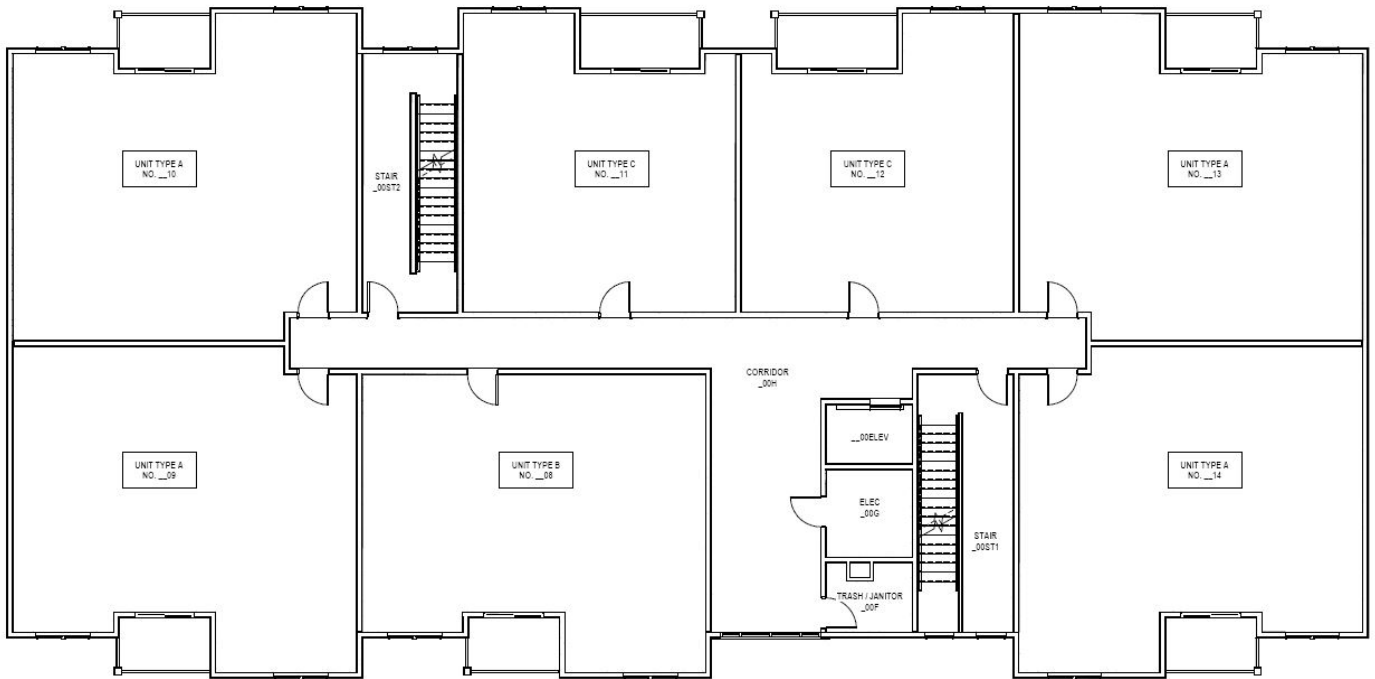


NOTE:
FIRST NUMBER OF EACH ROOM TO BE THE BUILDING NUMBER.
EXAMPLE - BUILDING 3 ROOMS SHOULD READ 303, 304, 305 ETC;
BUILDING 15 ROOMS SHOULD READ 1503, 1504, 1505 ETC.

A5 NUMBERING PLAN - MEDIUM BUILDING - 1ST FLOOR
1/8" = 1'-0"

APT NUMBER	FLOOR	TYPE	NAME	DESCRIPTION	LOCATION	SQ FT	PRICE	RESERVED
2301	1ST	Type B	Canal	2 Bed/ x2 Bath	Inline	935	2310	
2302	1ST	Type A	Glacier	2 Bed/ x2 Bath	Corner	1015	2435	
2303	1ST	Type A	Glacier	2 Bed/ x2 Bath	Corner	1015	2435	
2304	1ST	Type C	River	1 Bed/ x1 Bath	Inline	750	1935	
2305	1ST	Type C	River	1 Bed/ x1 Bath	Inline	750	1935	
2306	1ST	Type A	Glacier	2 Bed/ x2 Bath	Corner	1015	2435	
2307	1ST	Type A	Glacier	2 Bed/ x2 Bath	Corner	1015	2435	

Building 23– 2nd Floor

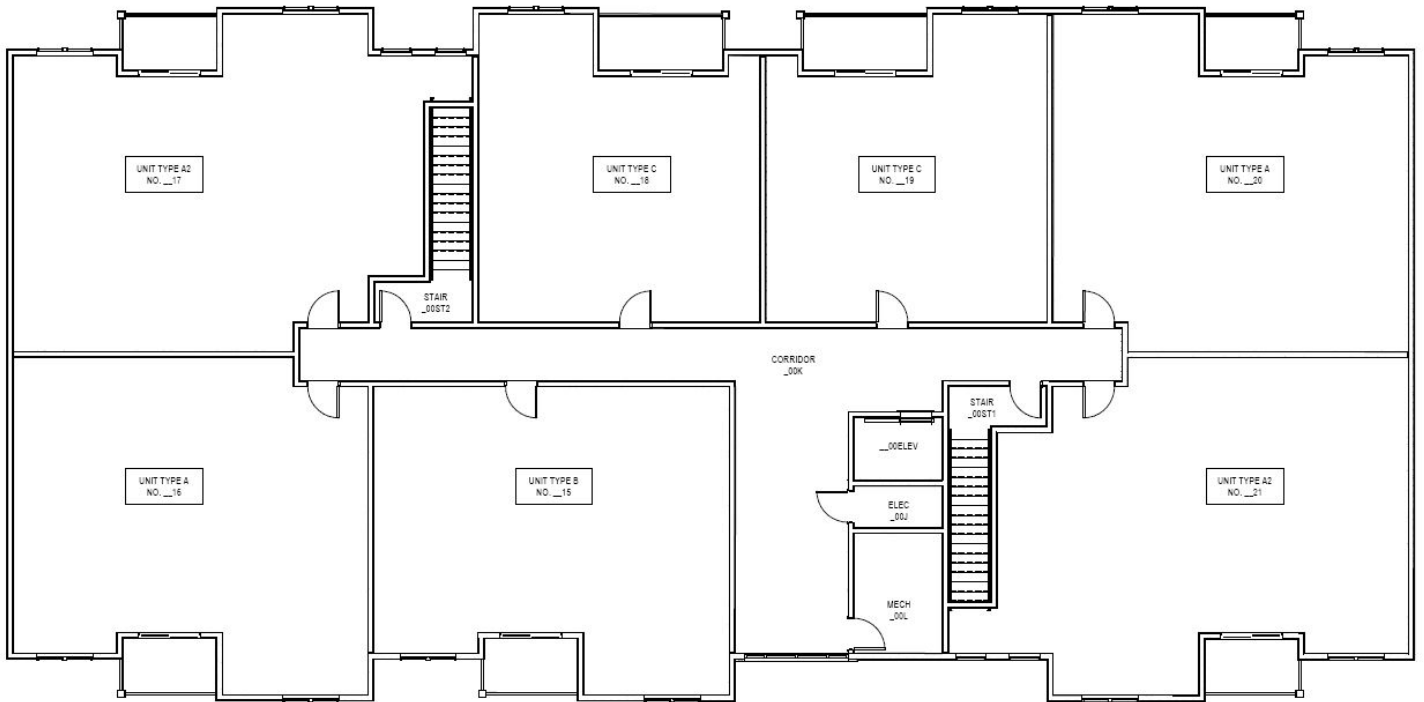


NOTE:
FIRST NUMBER OF EACH ROOM TO BE THE BUILDING NUMBER.
EXAMPLE - BUILDING 3 ROOMS SHOULD READ 303, 304, 305 ETC;
BUILDING 15 ROOMS SHOULD READ 1503, 1504, 1505 ETC.

E5 NUMBERING PLAN - MEDIUM BUILDING - 2ND FLOOR
1/8" = 1'-0"

APT NUMBER	FLOOR	TYPE	NAME	DESCRIPTION	LOCATION	SQ FT	PRICE	RESERVED
2308	2ND	Type B	Canal	2 Bed/ x2 Bath	Inline	935	2310	
2309	2ND	Type A	Glacier	2 Bed/ x2 Bath	Corner	1015	2435	
2310	2ND	Type A	Glacier	2 Bed/ x2 Bath	Corner	1015	2435	
2311	2ND	Type C	River	1 Bed/ x1 Bath	Inline	750	1935	
2312	2ND	Type C	River	1 Bed/ x1 Bath	Inline	750	1935	
2313	2ND	Type A	Glacier	2 Bed/ x2 Bath	Corner	1015	2435	
2314	2ND	Type A	Glacier	2 Bed/ x2 Bath	Corner	1015	2435	

Building 23– 3rd Floor



NOTE:
FIRST NUMBER OF EACH ROOM TO BE THE BUILDING NUMBER.
EXAMPLE - BUILDING 3 ROOMS SHOULD READ 303, 304, 305 ETC;
BUILDING 15 ROOMS SHOULD READ 1503, 1504, 1505 ETC.

E5 NUMBERING PLAN - MEDIUM BUILDING - 3RD FLOOR
1/8" = 1'-0"

APT NUMBER	FLOOR	TYPE	NAME	DESCRIPTION	LOCATION	SQ FT	PRICE	RESERVED
2315	3RD	Type B	Canal	2 Bed/ x2 Bath	Inline	935	2395	
2316	3RD	Type A	Glacier	2 Bed/ x2 Bath	Corner	1015	2525	
2317	3RD	Type A2		2 Bed/ x2 Bath	Corner	1050	2600	
2318	3RD	Type C	River	1 Bed/ x1 Bath	Inline	750	1995	
2319	3RD	Type C	River	1 Bed/ x1 Bath	Inline	750	1995	
2320	3RD	Type A	Glacier	2 Bed/ x2 Bath	Corner	1015	2525	
2321	3RD	Type A2		2 Bed/ x2 Bath	Corner	1050	2600	