



PROPERTY FEATURES

- 4,725 SF Office Building with great visibility and accessibility
- Minutes to all Major Highways, Syracuse and Hancock Airport
- Conveniently located at Route 298 near Military and Carrier Circles
- Parking for 19 cars
- Located 10 miles from Micron site

CONTACT EXCLUSIVE AGENT:

Stephen Saleski

Real Estate Associate Broker

(M): 315.727.3103

ssaleski@suttoncos.com

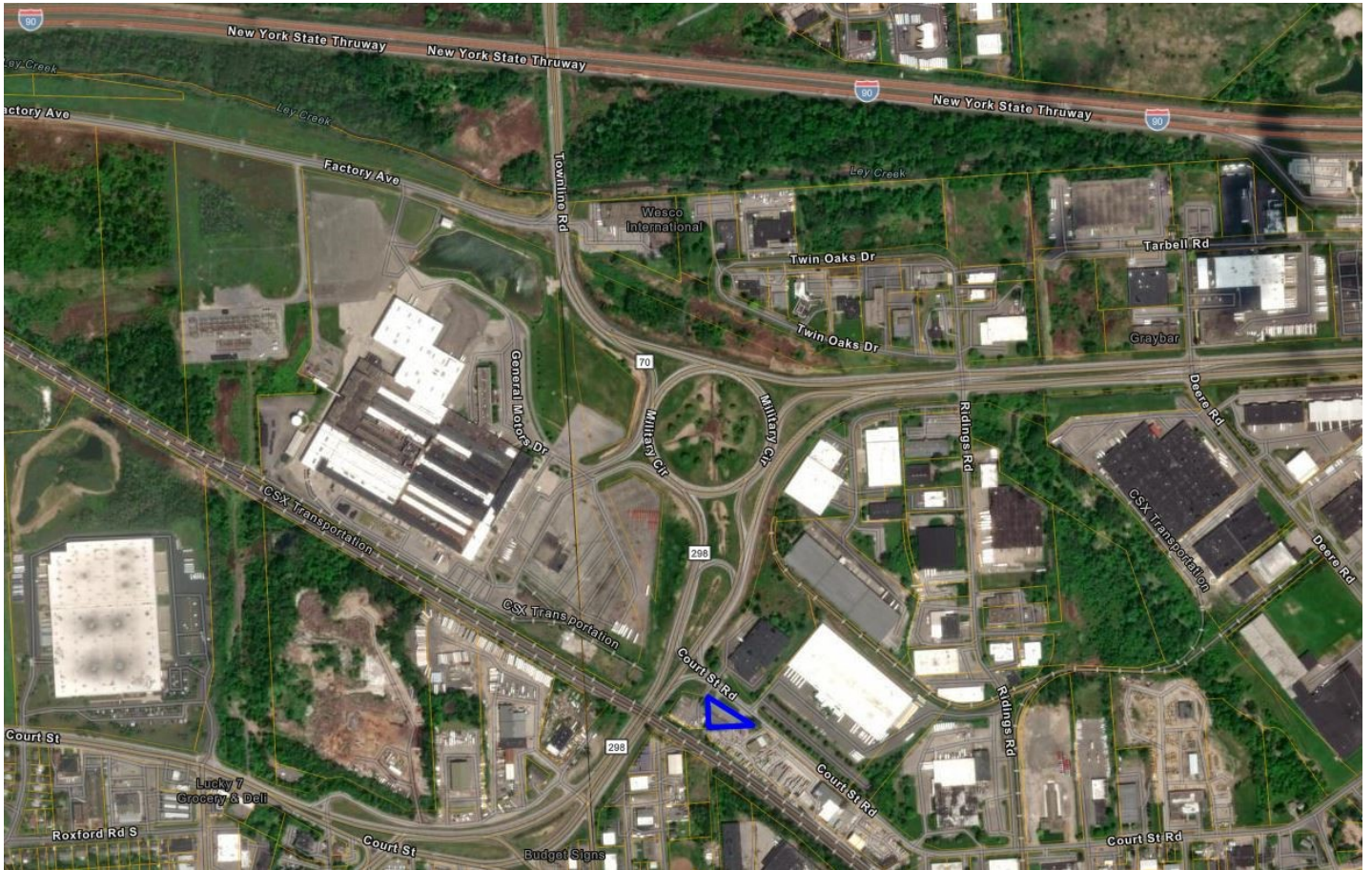
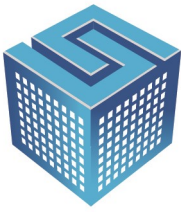
SUTTON REAL ESTATE COMPANY

525 Plum Street, Suite 100

Syracuse, New York 13204

315.424.1111

www.suttoncos.com



DEMOGRAPHICS

	1 Mile	3 Mile	5 Mile
Population	6,474	92,660	206,268
Households	3,148	38,899	83,834
Average Household Income	\$39,084	\$44,006	\$47,180

Source: CoStar 2023

TRAFFIC COUNTS

- Court Street Road —2,182
- Route 298 (Court Street)— 10,918
- Townline Road (Military Circle) —12,199

Source: CoStar 2023

CONTACT EXCLUSIVE AGENT:

Stephen Saleski
Real Estate Associate Broker
(M): 315.727.3103
ssaleski@suttoncos.com

SUTTON REAL ESTATE COMPANY

525 Plum Street, Suite 100
Syracuse, New York 13204
315.424.1111
www.suttoncos.com



CONTACT EXCLUSIVE AGENT:

Stephen Saleski

Real Estate Associate Broker

(M): 315.727.3103

ssaleski@suttoncos.com

SUTTON REAL ESTATE COMPANY

525 Plum Street, Suite 100

Syracuse, New York 13204

315.424.1111

www.suttoncos.com



FOR SALE | OFFICE

5802 Court Street Road, Syracuse, NY 13206



CONTACT EXCLUSIVE AGENT:

Stephen Saleski

Real Estate Associate Broker

(M): 315.727.3103

ssaleski@suttoncos.com

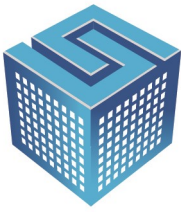
SUTTON REAL ESTATE COMPANY

525 Plum Street, Suite 100

Syracuse, New York 13204

315.424.1111

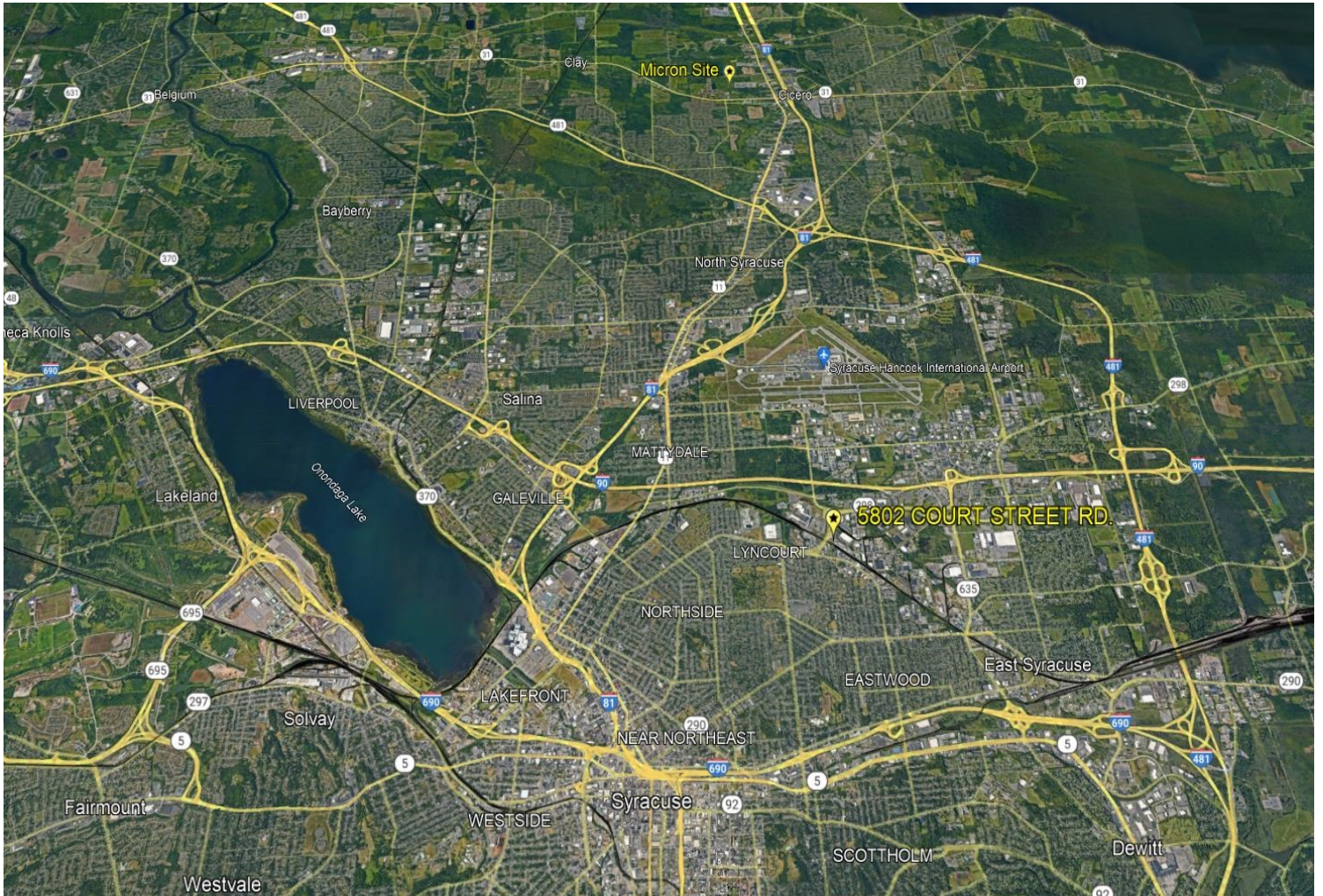
www.suttoncos.com



SUTTON
REAL ESTATE COMPANY

FOR SALE | OFFICE

5802 Court Street Road, Syracuse, NY 13206



CONTACT EXCLUSIVE AGENT:

Stephen Saleski

Real Estate Associate Broker

(M): 315.727.3103

ssaleski@suttoncos.com

SUTTON REAL ESTATE COMPANY

525 Plum Street, Suite 100

Syracuse, New York 13204

315.424.1111

www.suttoncos.com