



PROPERTY HIGHLIGHTS

- ❖ Westvale Plaza is a community retail center surrounded by densely populated and well-established neighborhoods on Syracuse West Side
- ❖ Anchor Tenants: Planet Fitness, Thrifty Shopper, European Specialties Market, Family Dollar, Geddes Federal Savings & O'Reilly Auto Parts
- ❖ Restaurant Tenants: Plaza Grande Mexican Restaurant & Cantina, Fish Cove, China Pavilion, Baghdad Restaurant, and Infinite Nutrition.
- ❖ Now Available: 983± SF & 1,991± SF inline
53,269± SF anchor position - subdividable

KEY FEATURES

- 184,393± SF GLA with 646± car parking
- 5-mile trade area has 207,673 population
- Inline storefronts, restaurants and anchor position for lease

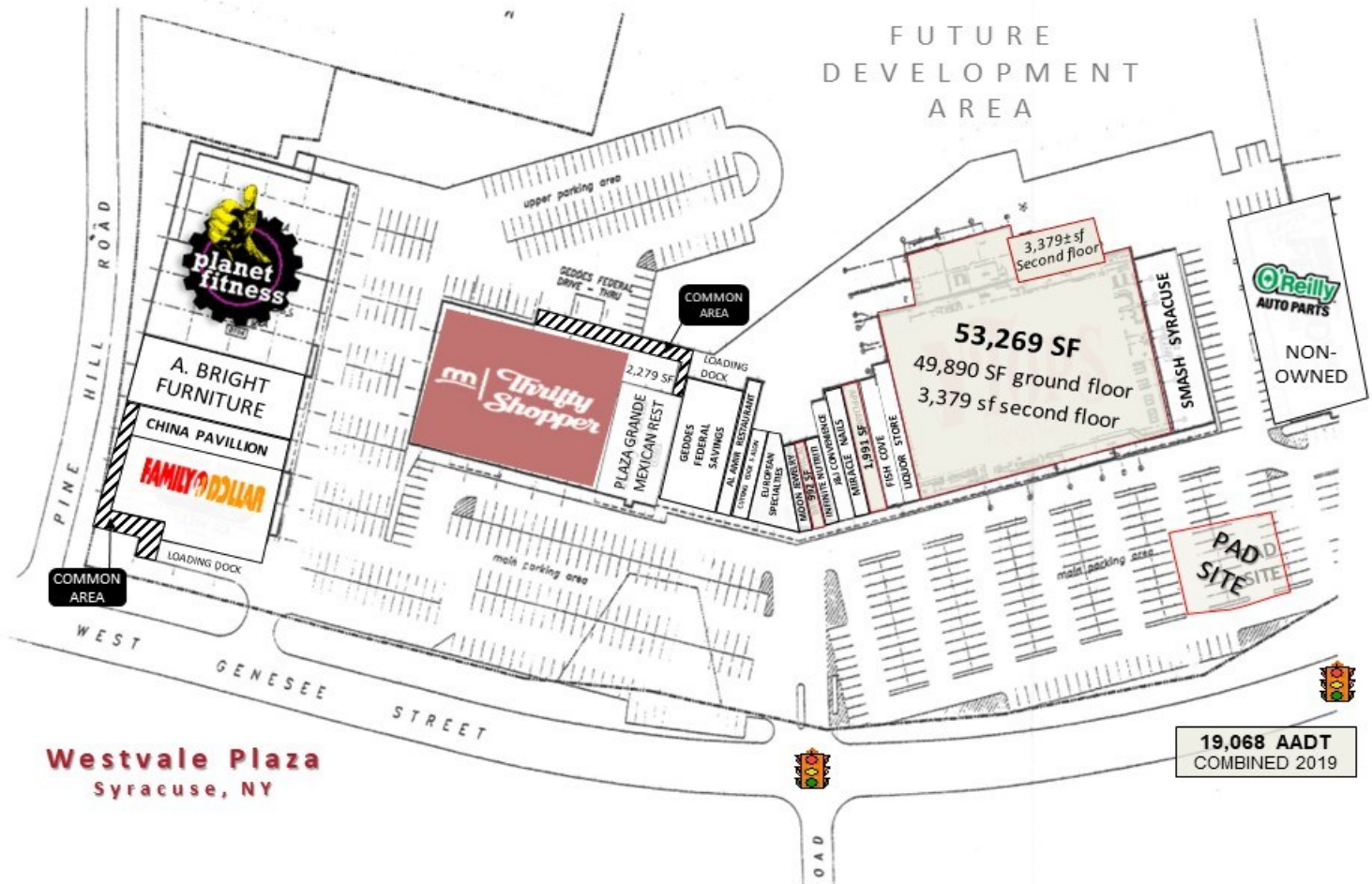
CONTACT EXCLUSIVE AGENT:



Laurence J. Socia, CLS
Licensed Associate RE Broker
315-345-5600
Lsocia@suttoncos.com

SUTTON REAL ESTATE COMPANY

525 Plum Street, Suite 101
Syracuse, New York 13204
Main 315.424.1111
www.suttoncos.com



SPACES FOR LEASE

SF Size	Dimensions	Position	Suite #
53,269± SF	255' X 174'	anchor	2120
1,991± SF	16' X 120' ±	inline	2132
983± SF	11' 10" X 90' ±	inline	2138
Lease Rates:		\$14.00 SF inline shops / anchor space \$8.00 SF	
N-N-N		\$ 4.20± SF current estimated	

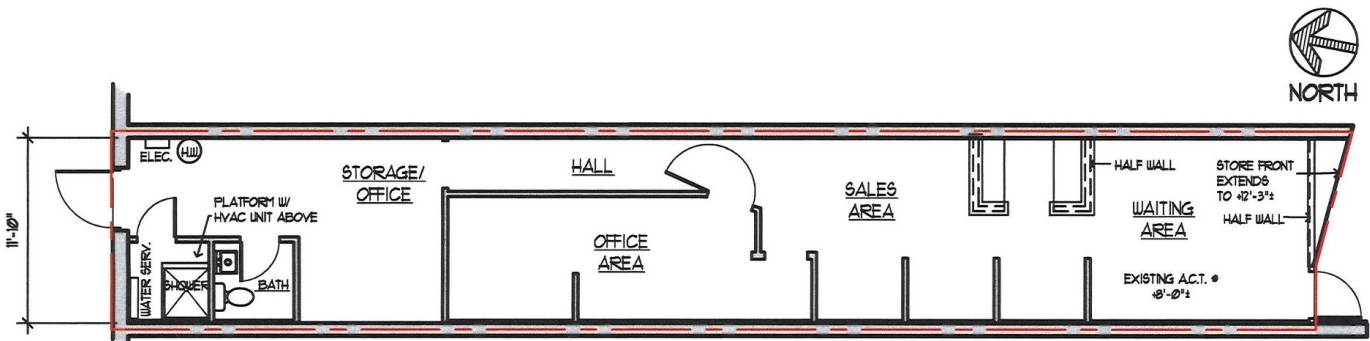
CONTACT EXCLUSIVE AGENT:



Laurence J. Socia, CLS
Licensed Associate RE Broker
315-345-5600
Lsocia@suttoncos.com

SUTTON REAL ESTATE COMPANY

525 Plum Street, Suite 101
Syracuse, New York 13204
Main 315.424.1111
www.suttoncos.com



AREA = 983 S.F.

SUITE 2138 AREA = 983 SF



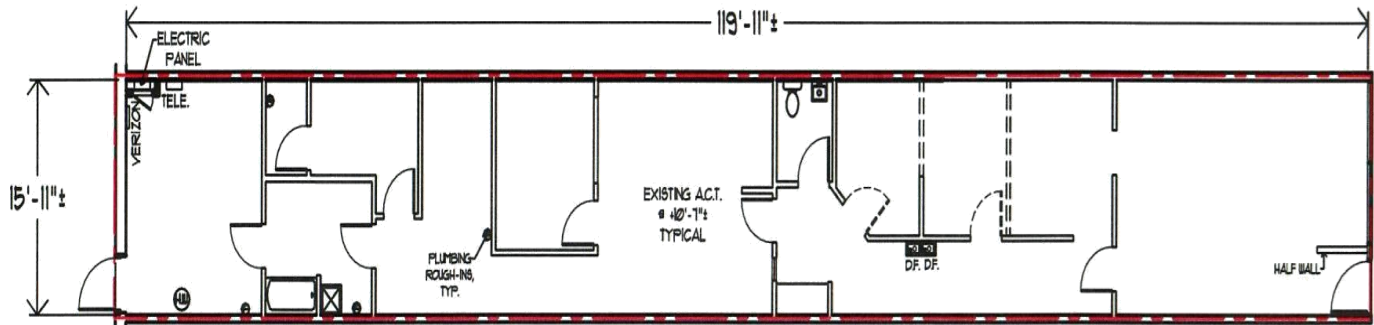
CONTACT EXCLUSIVE AGENT:



Laurence J. Socia, CLS
Licensed Associate RE Broker
315-345-5600
Lsocia@suttoncos.com

SUTTON REAL ESTATE COMPANY

525 Plum Street, Suite 101
Syracuse, New York 13204
Main 315.424.1111
www.suttoncos.com



SUITE 2132 AREA = 1,991 SF



CONTACT EXCLUSIVE AGENT:



Laurence J. Socia, CLS
Licensed Associate RE Broker
315-345-5600
lsocia@suttoncos.com

SUTTON REAL ESTATE COMPANY

525 Plum Street, Suite 101
Syracuse, New York 13204
Main 315.424.1111
www.suttoncos.com



FOR LEASE | RETAIL SPACE

Westvale Plaza

2102-2214 & 2318 W. Genesee St., Syracuse NY 13219

DEMOGRAPHICS

By Radius	1 Mile	3 Mile	5 Mile
Population	13,814	80,779	207,673
Households	6,052	33,085	83,542
Families	2,884	19,298	46,714
Median HH Income	\$54,047	\$45,029	\$47,615
Businesses	290	4,198	7,897
Employees	3,760	71,666	153,245

SOURCE: ESRI Report 8/30/2022

LATITUDE

43.04790

LONGITUDE

-76.20053

TRAFFIC

Roadway	Volume Count
NYS Route 5	15,100 AADT

SOURCE: ESRI Report 8/30/2018



CONTACT EXCLUSIVE AGENT:



Laurence J. Socia, CLS
Licensed Associate RE Broker
315-345-5600
Lsocia@suttoncos.com

SUTTON REAL ESTATE COMPANY

525 Plum Street, Suite 101
 Syracuse, New York 13204
 Main 315.424.1111
www.suttoncos.com

All information furnished, regarding property for sale, rental or financing is from sources deemed reliable, but no warranty or representation is made as to the accuracy thereof and same is submitted subject to errors, change of price, rental or conditions prior sale, lease or financing or withdrawal without notice



FOR LEASE | RETAIL SPACE

Westvale Plaza

2102-2214 & 2318 W. Genesee St., Syracuse NY 13219

PROPERTY OVERVIEW

Common Name:	Westvale Plaza
Legal Address:	2102–2214 & 2318 W. Genesee Street (Route 5) Syracuse NY 13219
Municipal Jurisdictions:	Village of Solvay / Town of Geddes / County of Onondaga
Zoning:	Commercial (C) Solvay
Nearest Cross Streets:	Fay Road and Charles Ave / City of Syracuse line
Proximity to Highway:	1.5± miles from Routes 690, I-81 & I-90
Public Transportation Access:	Located on CENTRO bus line
Parcel Size / Frontage:	13.85± acres / 1,108'± road frontage
Parking Spaces:	646± surface lots
Total Building Area:	184,393± SF
Available Spaces:	983± SF, 1,991± SF inline & 53,269± SF anchor
Utilities:	Gas, sewer, water, Solvay Electric
Signage:	Storefront & pylon

- ❖ Anchor space is subdividable down to 10,000± SF
- ❖ Development parcels available behind plaza in upper and lower levels

BECOME PART OF THE EXPERIENCE:



CONTACT EXCLUSIVE AGENT:



Laurence J. Socia, CLS
Licensed Associate RE Broker
 315-345-5600
 lsocia@suttoncos.com

SUTTON REAL ESTATE COMPANY

525 Plum Street, Suite 101
 Syracuse, New York 13204
 Main 315.424.1111
 www.suttoncos.com