



**SUTTON**  
REAL ESTATE COMPANY

**FOR SUBLEASE | OFFICE**  
**SALINA MEADOWS BUILDING I**

220 Salina Meadows Parkway, Syracuse, NY 13212



**SPACE FEATURES**

- 12,928 SF of newly built out Class A Office Space
- 6 private offices,
- 2 conference rooms
- Breakroom
- Bull pen—support and programming areas;

**PROPERTY FEATURES**

- 20 Acre Office Park with walking trails
- Fitness center with exercise equipment and showers/locker rooms
- Large common conference center
- Café offering breakfast/lunch/snacks and full catering;
- Abundant free parking on site
- Minutes to Hancock International Airport & CBD Syracuse
- Close to I-81 & NYS Thruway

**CONTACT EXCLUSIVE AGENTS:**

**Bart Feinberg**

*Senior Associate Broker*

315.447.8668

[bfeinberg@suttoncos.com](mailto:bfeinberg@suttoncos.com)

**SUTTON REAL ESTATE COMPANY**

525 Plum Street, Suite 100

Syracuse, New York 13204

315.424.1111

[www.suttoncos.com](http://www.suttoncos.com)

*All information contained herein is from sources deemed reliable and is submitted subjected to errors, omissions, changes in price or other conditions, prior sale, leasing without notice. Principals should not rely solely upon the information contained herein.*





**FOR SUBLEASE | OFFICE**  
**SALINA MEADOWS BUILDING I**

220 Salina Meadows Parkway, Syracuse, NY 13212



**CONTACT EXCLUSIVE AGENTS:**

**Bart Feinberg**

*Senior Associate Broker*

315.447.8668

[bfeinberg@suttoncos.com](mailto:bfeinberg@suttoncos.com)

**SUTTON REAL ESTATE COMPANY**

525 Plum Street, Suite 100

Syracuse, New York 13204

315.424.1111

[www.suttoncos.com](http://www.suttoncos.com)

*All information contained herein is from sources deemed reliable and is submitted subjected to errors, omissions, changes in price or other conditions, prior sale, leasing without notice. Principals should not rely solely upon the information contained herein.*





**SUTTON**  
REAL ESTATE COMPANY

**FOR SUBLEASE | OFFICE**  
**SALINA MEADOWS BUILDING I**

220 Salina Meadows Parkway, Syracuse, NY 13212



**CONTACT EXCLUSIVE AGENTS:**

**Bart Feinberg**

*Senior Associate Broker*

315.447.8668

[bfeinberg@suttoncos.com](mailto:bfeinberg@suttoncos.com)

**SUTTON REAL ESTATE COMPANY**

525 Plum Street, Suite 100

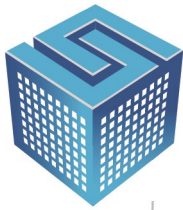
Syracuse, New York 13204

315.424.1111

[www.suttoncos.com](http://www.suttoncos.com)

*All information contained herein is from sources deemed reliable and is submitted subjected to errors, omissions, changes in price or other conditions, prior sale, leasing without notice. Principals should not rely solely upon the information contained herein.*

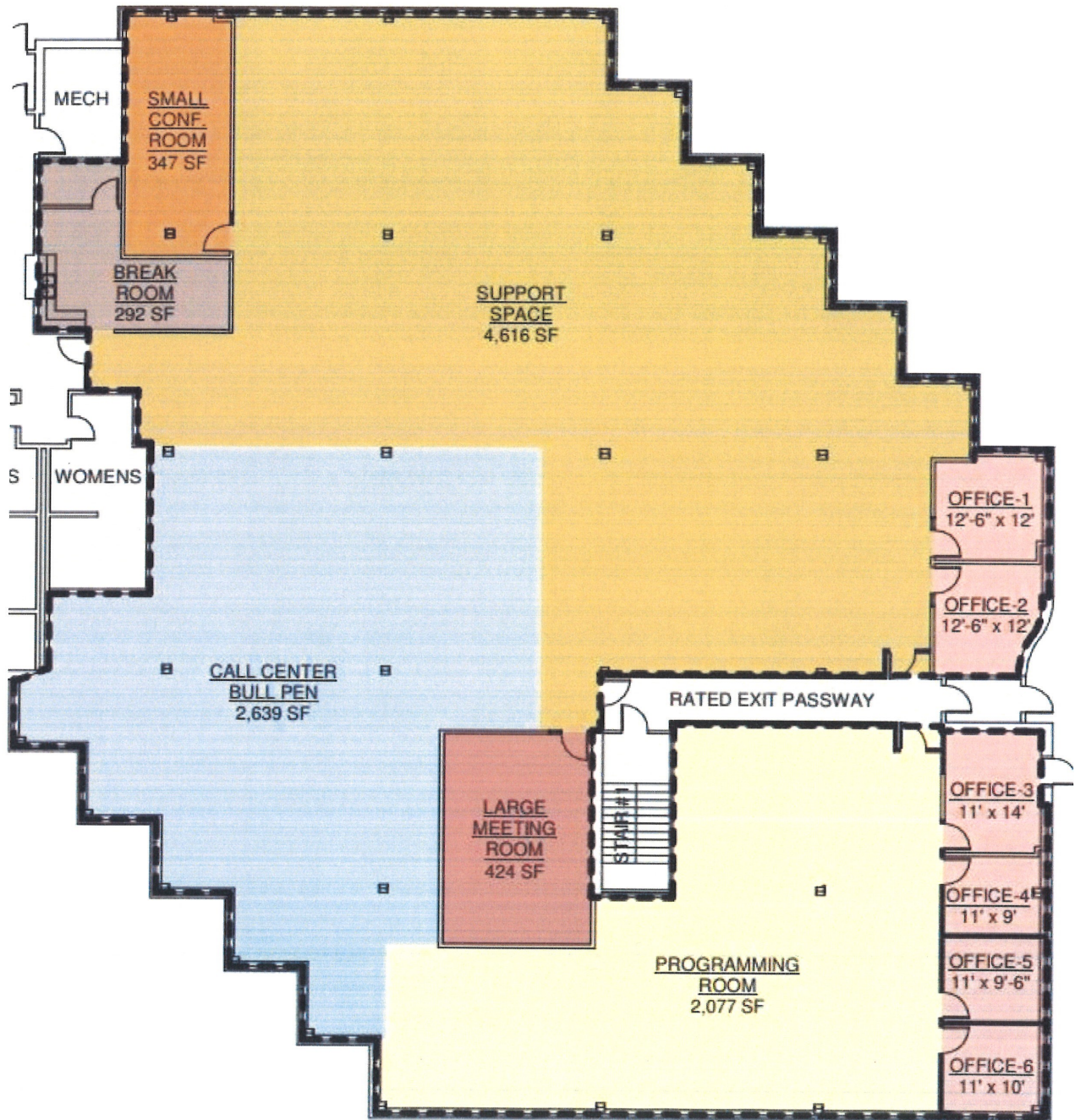




**SUTTON**  
REAL ESTATE COMPANY

**FOR SUBLEASE | OFFICE**  
**SALINA MEADOWS BUILDING I**

220 Salina Meadows Parkway, Syracuse, NY 13212



**CONTACT EXCLUSIVE AGENTS:**

**Bart Feinberg**

*Senior Associate Broker*

315.447.8668

[bfeinberg@suttoncos.com](mailto:bfeinberg@suttoncos.com)

**SUTTON REAL ESTATE COMPANY**

525 Plum Street, Suite 100

Syracuse, New York 13204

315.424.1111

[www.suttoncos.com](http://www.suttoncos.com)

*All information contained herein is from sources deemed reliable and is submitted subjected to errors, omissions, changes in price or other conditions, prior sale, leasing without notice. Principals should not rely solely upon the information contained herein.*