



**Micron invests in the future of Central New York!**

Micron Technology Inc.'s semiconductor facility at Central New York's White Pine site is the largest proposed project in the Central New York region's history, and among the largest industrial manufacturing investments in U.S. history. Over the next 20 years Micron will invest up to \$100 billion and create 9,000 Micron jobs and 40,000 community jobs.

**SPACE FEATURES**

- 12,928 SF of newly built out Class A Office Space
- 6 private offices,
- 2 conference rooms
- Breakroom
- Bull pen—support and programming areas;

**PROPERTY FEATURES**

- Micron less than 15 minutes!
- 20 Acre Office Park with walking trails
- Fitness center with exercise equipment and showers/locker rooms
- Large common conference center
- Café offering breakfast/lunch/snacks and full catering;
- Abundant free parking on site
- Minutes to Hancock International Airport & CBD Syracuse
- Close to I-81 & NYS Thruway

**CONTACT EXCLUSIVE AGENTS:**

**Bart Feinberg**

*Senior Associate Broker*

315.447.8668

[bfeinberg@suttoncos.com](mailto:bfeinberg@suttoncos.com)

**SUTTON REAL ESTATE COMPANY**

525 Plum Street, Suite 100

Syracuse, New York 13204

315.424.1111

[www.suttoncos.com](http://www.suttoncos.com)





**FOR SUBLEASE | OFFICE**  
**SALINA MEADOWS BUILDING I**

220 Salina Meadows Parkway, Syracuse, NY 13212



**CONTACT EXCLUSIVE AGENTS:**

**Bart Feinberg**

*Senior Associate Broker*

315.447.8668

[bfeinberg@suttoncos.com](mailto:bfeinberg@suttoncos.com)

**SUTTON REAL ESTATE COMPANY**

525 Plum Street, Suite 100

Syracuse, New York 13204

315.424.1111

[www.suttoncos.com](http://www.suttoncos.com)

*All information contained herein is from sources deemed reliable and is submitted subjected to errors, omissions, changes in price or other conditions, prior sale, leasing without notice. Principals should not rely solely upon the information contained herein.*





**SUTTON**  
REAL ESTATE COMPANY

**FOR SUBLEASE | OFFICE**  
**SALINA MEADOWS BUILDING I**

220 Salina Meadows Parkway, Syracuse, NY 13212



**CONTACT EXCLUSIVE AGENTS:**

**Bart Feinberg**

*Senior Associate Broker*

315.447.8668

[bfeinberg@suttoncos.com](mailto:bfeinberg@suttoncos.com)

**SUTTON REAL ESTATE COMPANY**

525 Plum Street, Suite 100

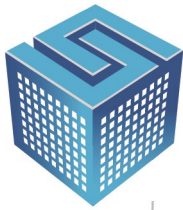
Syracuse, New York 13204

315.424.1111

[www.suttoncos.com](http://www.suttoncos.com)

*All information contained herein is from sources deemed reliable and is submitted subjected to errors, omissions, changes in price or other conditions, prior sale, leasing without notice. Principals should not rely solely upon the information contained herein.*

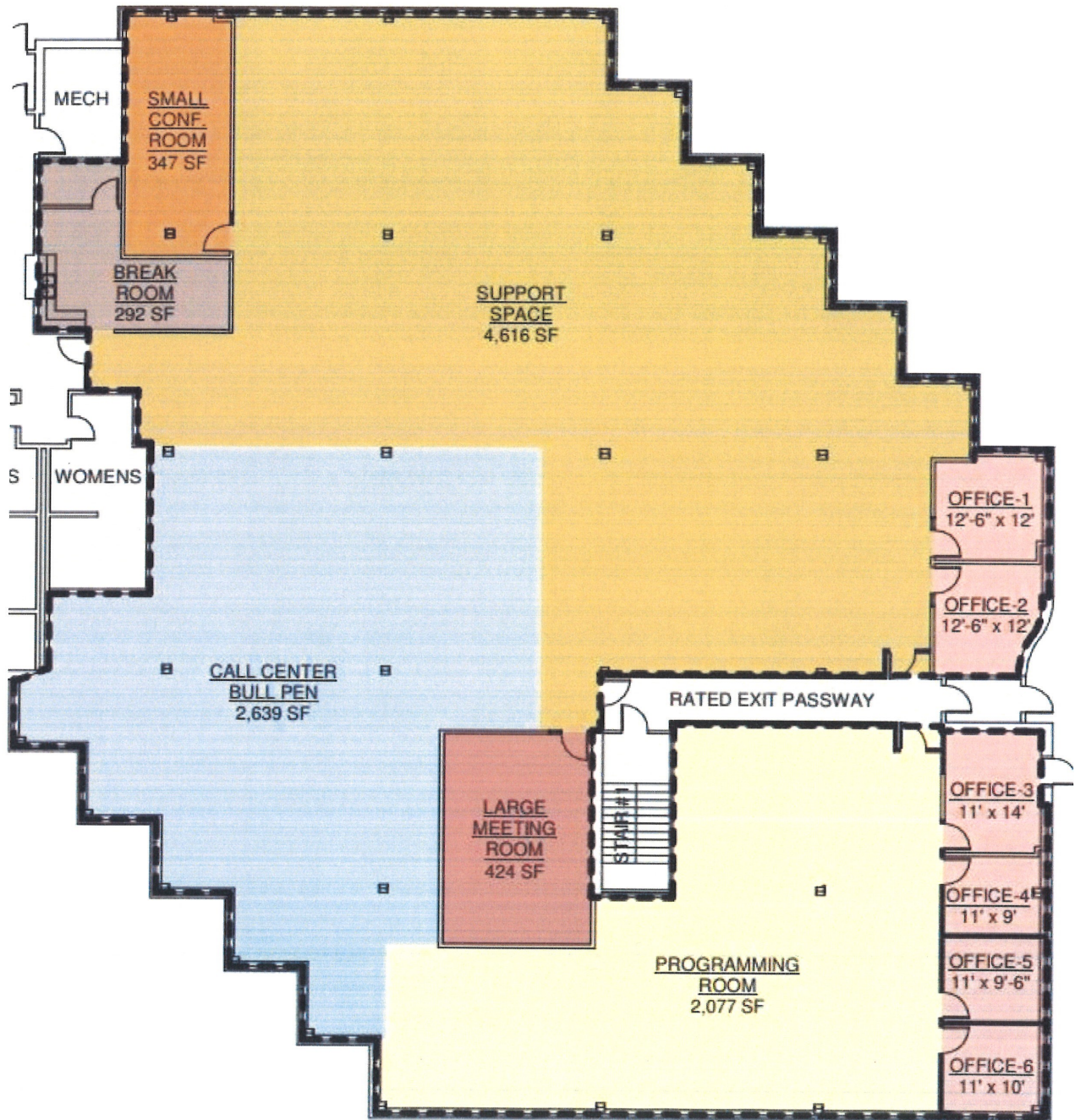




**SUTTON**  
REAL ESTATE COMPANY

**FOR SUBLEASE | OFFICE**  
**SALINA MEADOWS BUILDING I**

220 Salina Meadows Parkway, Syracuse, NY 13212



**CONTACT EXCLUSIVE AGENTS:**

**Bart Feinberg**

*Senior Associate Broker*

315.447.8668

[bfeinberg@suttoncos.com](mailto:bfeinberg@suttoncos.com)

**SUTTON REAL ESTATE COMPANY**

525 Plum Street, Suite 100

Syracuse, New York 13204

315.424.1111

[www.suttoncos.com](http://www.suttoncos.com)

*All information contained herein is from sources deemed reliable and is submitted subjected to errors, omissions, changes in price or other conditions, prior sale, leasing without notice. Principals should not rely solely upon the information contained herein.*