

SUTTON
REAL ESTATE COMPANY

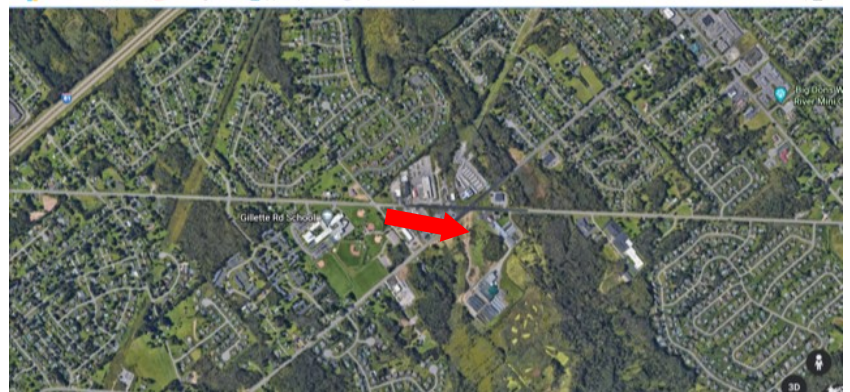
FOR SALE | LAND

South Bay & Thompson Roads, Cicero, NY



PROPERTY FEATURES

- Prime Frontage
- Available for the first time ever!
- At least 15 acres
- Can be divided
- Approximately 1,600' of corner frontage
- Businesses will be relocating



CONTACT EXCLUSIVE AGENT:

John Thomasmeyer

Real Estate Broker Associate

(M) 315.569.2000

tjohn@twcny.rr.com

SUTTON REAL ESTATE COMPANY

525 Plum Street, Suite 100

Syracuse, New York 13204

315.424.1111

www.suttoncos.com

All information contained herein is from sources deemed reliable and is submitted subject to errors, omissions, changes in price or other conditions, prior sale, leasing without notice. Principals should not rely solely upon the information contained herein.