



## PROPERTY FEATURES

- 2 suites available—971+/- SF & 921+/- SF
- 2 story professional office building
- Onsite parking
- Elevator access
- Common area restrooms

### CONTACT EXCLUSIVE AGENTS:

**Ben Lewis**

*Licensed Salesperson*

Mobile 315.447.9242

[blewis@suttoncos.com](mailto:blewis@suttoncos.com)

### SUTTON REAL ESTATE COMPANY

525 Plum Street, Suite 100

Syracuse, New York 13204

315.424.1111

[www.suttoncos.com](http://www.suttoncos.com)





**SUTTON**  
REAL ESTATE COMPANY

**FOR LEASE | OFFICE**

890 7th North Street, Liverpool, NY 13088



**CONTACT EXCLUSIVE AGENTS:**

**Ben Lewis**

*Licensed Salesperson*

Mobile 315.447.9242

[blewis@suttoncos.com](mailto:blewis@suttoncos.com)

**SUTTON REAL ESTATE COMPANY**

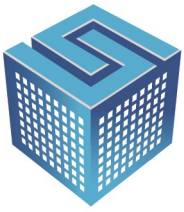
525 Plum Street, Suite 100

Syracuse, New York 13204

315.424.1111

[www.suttoncos.com](http://www.suttoncos.com)

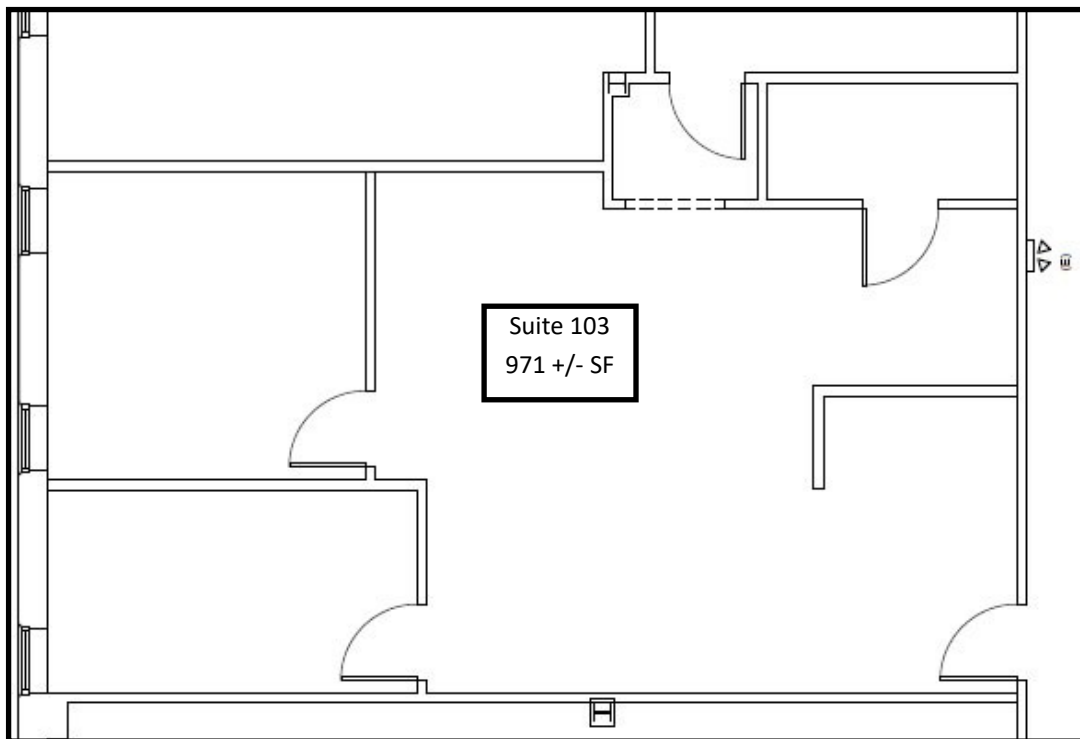
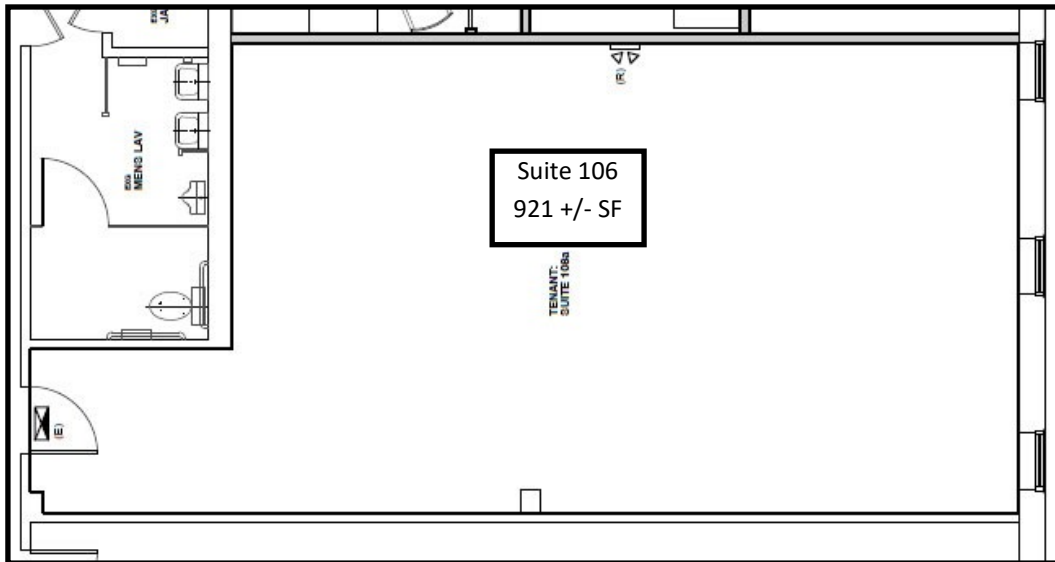
*All information contained herein is from sources deemed reliable and is submitted subjected to errors, omissions, changes in price or other conditions, prior sale, leasing without notice. Principals should not rely solely upon the information contained herein.*



**SUTTON**  
REAL ESTATE COMPANY

**FOR LEASE | OFFICE**

890 7th North Street, Liverpool, NY 13088



**CONTACT EXCLUSIVE AGENTS:**

**Ben Lewis**

*Licensed Salesperson*

Mobile 315.447.9242

blewis@suttoncos.com

**SUTTON REAL ESTATE COMPANY**

525 Plum Street, Suite 100

Syracuse, New York 13204

315.424.1111

[www.suttoncos.com](http://www.suttoncos.com)

*All information contained herein is from sources deemed reliable and is submitted subjected to errors, omissions, changes in price or other conditions, prior sale, leasing without notice. Principals should not rely solely upon the information contained herein.*