

**SUTTON**  
REAL ESTATE COMPANY

**FOR LEASE | OFFICE**  
**THE CROWN BUILDING**

301 W. Fayette St., Syracuse, NY 13202



## PROPERTY FEATURES

- 3,700 +/- SF office space comprised of entire 3rd floor; can be demised to a minimum of 1,500 +/- SF
- Space has unique features including operable large windows, high ceilings
- Direct elevator access to space; mix of offices, conference rooms and kitchenette
- On-site property manager
- Located in Downtown Syracuse's Armory Square
- Tenants include Kitty Hoynes Pub & Restaurant and accounting firm
- Convenient access to I-690 and I-81
- Close walk to restaurants, shops, parking lots and garages

### CONTACT EXCLUSIVE AGENTS:

**Kristen Nave**

*Real Estate Salesperson*

(M): 315.569.9907

[knave@suttoncos.com](mailto:knave@suttoncos.com)

**Ben Lewis**

*Real Estate Salesperson*

(M): 315.447.9242

[blewis@suttoncos.com](mailto:blewis@suttoncos.com)

### SUTTON REAL ESTATE COMPANY

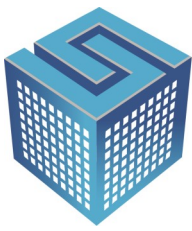
525 Plum Street, Suite 100

Syracuse, New York 13204

315.424.1111

[www.suttoncos.com](http://www.suttoncos.com)

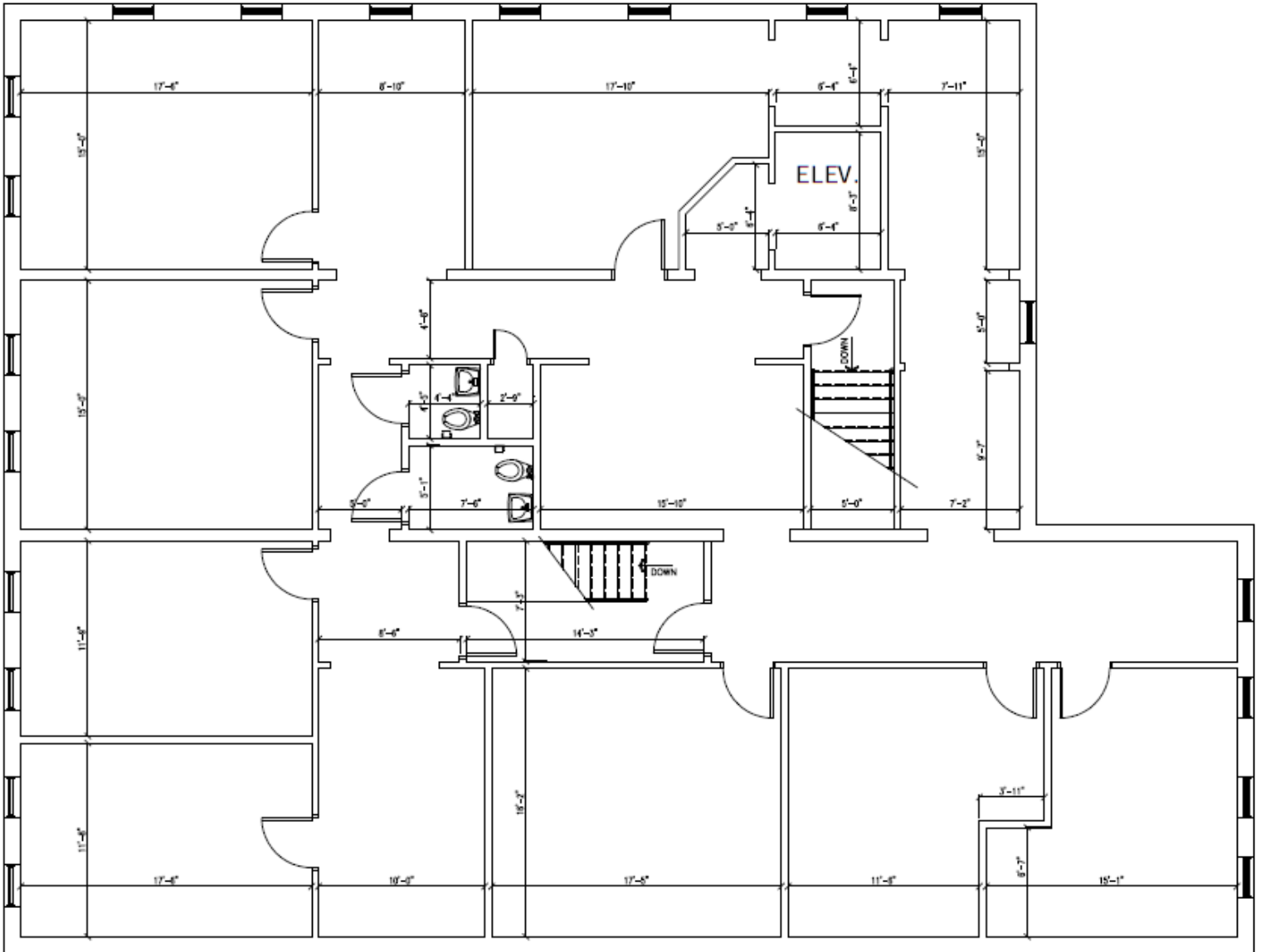
*All information contained herein is from sources deemed reliable and is submitted subjected to errors, omissions, changes in price or other conditions, prior sale, leasing without notice. Principals should not rely solely upon the information contained herein.*



**SUTTON**  
REAL ESTATE COMPANY

**FOR LEASE | OFFICE**  
**THE CROWN BUILDING**

301 W. Fayette St., Syracuse, NY 13202



**CONTACT EXCLUSIVE AGENTS:**

**Kristen Nave**

*Real Estate Salesperson*

(M): 315.569.9907

[knave@suttoncos.com](mailto:knave@suttoncos.com)

**Ben Lewis**

*Real Estate Salesperson*

(M): 315.447.9242

[blewis@suttoncos.com](mailto:blewis@suttoncos.com)

**SUTTON REAL ESTATE COMPANY**

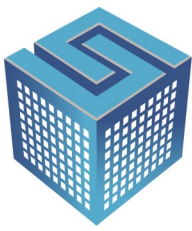
525 Plum Street, Suite 100

Syracuse, New York 13204

315.424.1111

[www.suttoncos.com](http://www.suttoncos.com)

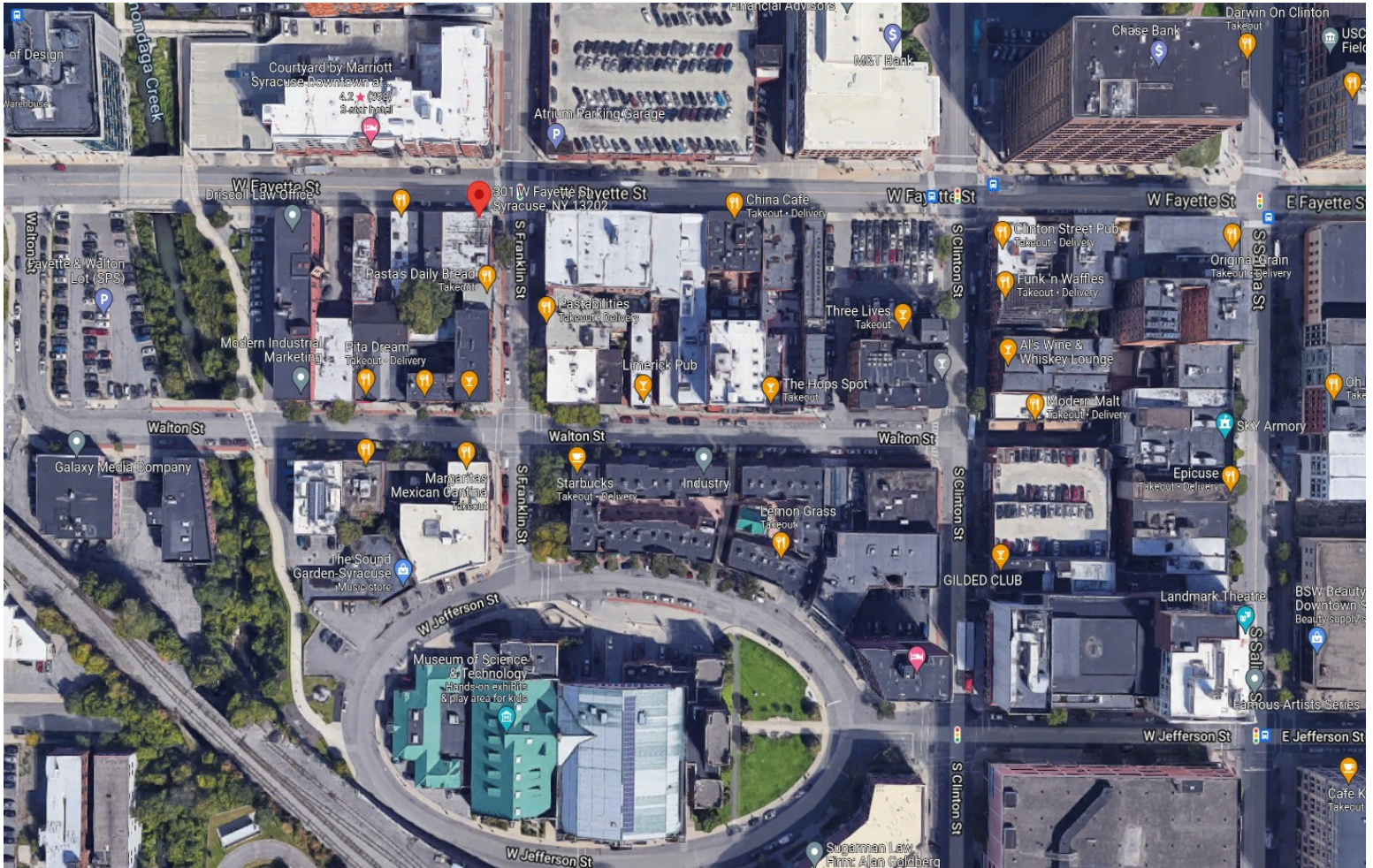
*All information contained herein is from sources deemed reliable and is submitted subjected to errors, omissions, changes in price or other conditions, prior sale, leasing without notice. Principals should not rely solely upon the information contained herein.*



**SUTTON**  
REAL ESTATE COMPANY

**FOR LEASE | OFFICE**  
**THE CROWN BUILDING**

301 W. Fayette St., Syracuse, NY 13202



**CONTACT EXCLUSIVE AGENTS:**

**Kristen Nave**

*Real Estate Salesperson*

(M): 315.569.9907

[knave@suttoncos.com](mailto:knave@suttoncos.com)

**Ben Lewis**

*Real Estate Salesperson*

(M): 315.447.9242

[blewis@suttoncos.com](mailto:blewis@suttoncos.com)

**SUTTON REAL ESTATE COMPANY**

525 Plum Street, Suite 100

Syracuse, New York 13204

315.424.1111

[www.suttoncos.com](http://www.suttoncos.com)

*All information contained herein is from sources deemed reliable and is submitted subjected to errors, omissions, changes in price or other conditions, prior sale, leasing without notice. Principals should not rely solely upon the information contained herein.*