



PROPERTY FEATURES

- 6,500+/- SF flex building
- 2,500—5,400 +/- SF office
- 1,350-4,000 +/- SF warehouse
- 13' ceiling heights
- 2—10' X 12' dock doors
- 1 (potential) drive-in door
- Low cost Solvay municipal power
- 20 car parking
- Easy access to Interstates, NYS Thruway & Rt. 690



CONTACT EXCLUSIVE AGENT:

Barton K. Feinberg

Director of Brokerage, Associate Broker

(M) 315.447.8668

bfeinberg@suttoncos.com

SUTTON REAL ESTATE COMPANY

525 Plum Street, Suite 100

Syracuse, New York 13204

315.424.1111

www.suttoncos.com



Conference/Training Room



Kitchen Area

CONTACT EXCLUSIVE AGENT:

Barton K. Feinberg

Director of Brokerage, Associate Broker

(M) 315.447.8668

bfeinberg@suttoncos.com

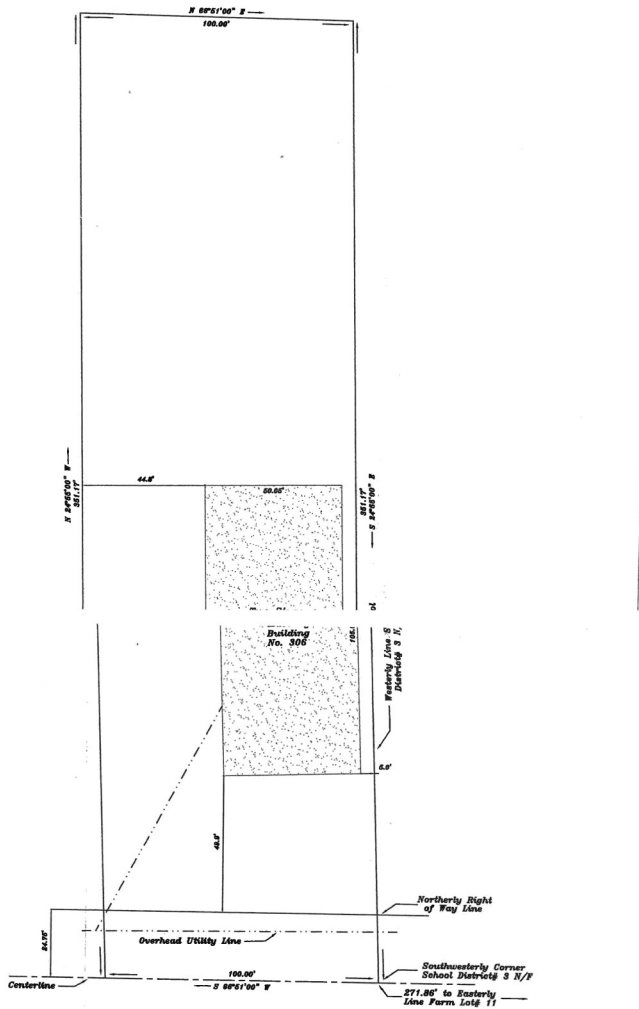
SUTTON REAL ESTATE COMPANY

525 Plum Street, Suite 100

Syracuse, New York 13204

315.424.1111

www.suttoncos.com



Lakeside Road
 owned to Crossroads Land Management, Inc.

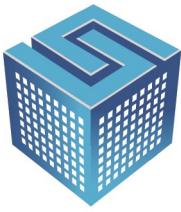
R.J. LIGHTY, SR. LAND SURVEYING
 888 S. Albany Street, Syracuse, NY 13205
 (315) 487-1111
 License No. 46378
 Location Survey on Part of Farm Lot # 11 - Geddes.
 Known as No. 306 Lakeside Road, Town of Geddes, County of Onondaga, State of New York.
 Drawn by: **MJM** Scale: 1" = 30' Date: 01-20-11
 Revisions:
 Authorized abstract of this survey may be obtained from a licensed land surveyor's office in a notation of Section 7209, Subdivision of the New York State Real Property Law. Only copies from the original of this survey marked with an original of the land surveyor's inked seal or the embossed iron seal, conforming to the statute, shall be considered to be valid. All corrections shall run only to the person or persons for whom the survey is prepared and shall be transferable to subsequent persons or entities. Copyright 2011, R.J. Lighty, Sr. Land Surveying, Inc.

CONTACT EXCLUSIVE AGENT:

Barton K. Feinberg
 Director of Brokerage, Associate Broker
 (M) 315.447.8668
bfeinberg@suttoncos.com

SUTTON REAL ESTATE COMPANY
 525 Plum Street, Suite 100
 Syracuse, New York 13204
 315.424.1111
www.suttoncos.com

All information contained herein is from sources deemed reliable and is submitted subjected to errors, omissions, changes in price or other conditions, prior sale, leasing without notice. Principals should not rely solely upon the information contained herein.



SUTTON
REAL ESTATE COMPANY

FOR SALE | FLEX

306 Lakeside Road, Syracuse, NY 13209



CONTACT EXCLUSIVE AGENT:

Barton K. Feinberg

Director of Brokerage, Associate Broker

(M) 315.447.8668

bfeinberg@suttoncos.com

SUTTON REAL ESTATE COMPANY

525 Plum Street, Suite 100

Syracuse, New York 13204

315.424.1111

www.suttoncos.com

All information contained herein is from sources deemed reliable and is submitted subjected to errors, omissions, changes in price or other conditions, prior sale, leasing without notice. Principals should not rely solely upon the information contained herein.