



PROPERTY FEATURES

- Currently operating 9-hole golf course with additional land for expansion
- 48.03 +/- acre site ideal for recreational or other development
- Located 1/2 mile from New York State Fairgrounds and St. Joseph's Amphitheater at Lakeview
- Exposure from proximity to NYS Fairgrounds, host of over 300 events and 2 million visitors annually
- Easy access to I-690 and Route 695 and minutes to I-81 and I-90 (New York State Thruway)
- Short drive to Onondaga Lake, downtown Syracuse, Destiny USA Mall and Syracuse University

CONTACT EXCLUSIVE AGENT:

Stephen Saleski

Associate Broker

(M): 315.727.3103

ssaleski@suttoncos.com

SUTTON REAL ESTATE COMPANY

525 Plum Street, Suite 100

Syracuse, New York 13204

315.424.1111

www.suttoncos.com



DEMOGRAPHICS

	1 Mile	3 Mile	5 Mile
Population	1,328	36,922	145,592
Households	539	16,144	61,967
Median Household Income	\$72,691	\$57,641	\$54,436

Source: CoStar

TRAFFIC COUNTS

- State Fair Blvd. — 7,491
- I-690 — 49,645
- NYS Rt 695 — 46,322

Source: CoSar

CONTACT EXCLUSIVE AGENT:

Stephen Saleski

Associate Broker

(M): 315.727.3103

ssaleski@suttoncos.com

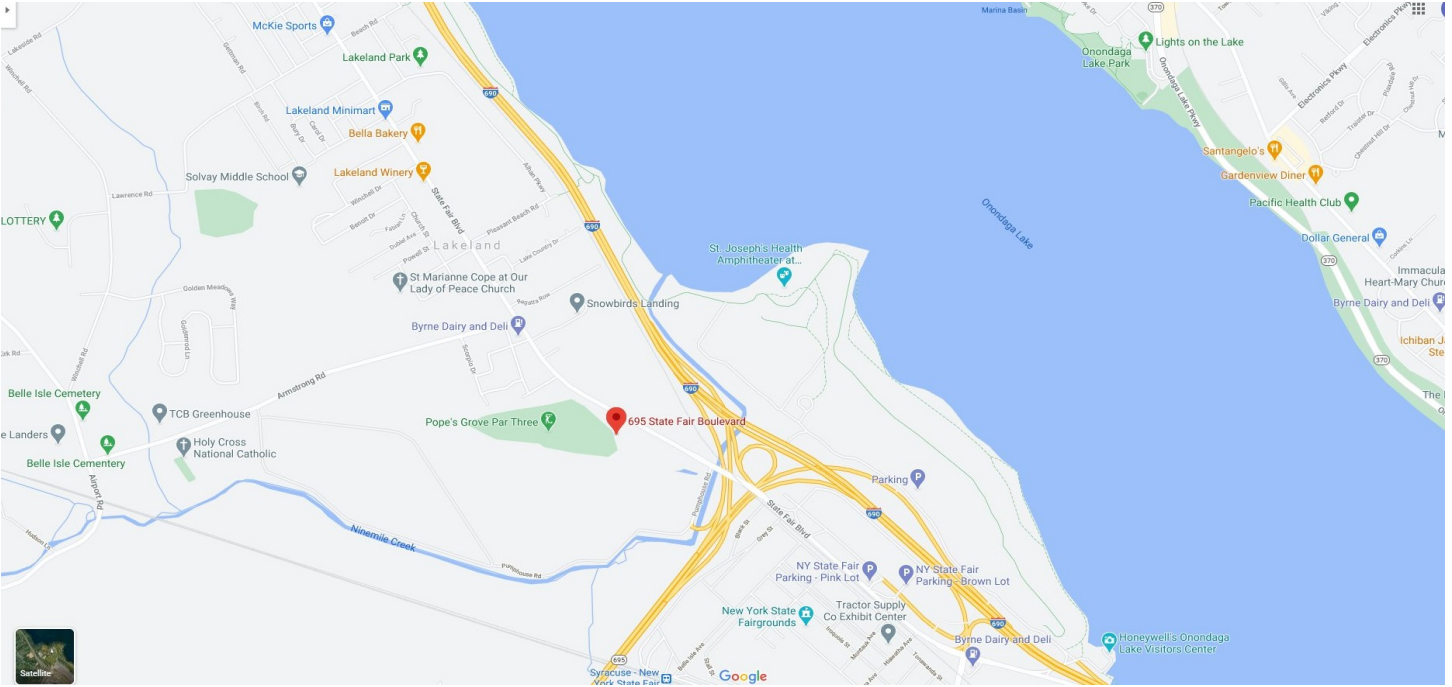
SUTTON REAL ESTATE COMPANY

525 Plum Street, Suite 100

Syracuse, New York 13204

315.424.1111

www.suttoncos.com



CONTACT EXCLUSIVE AGENT:

Stephen Saleski

Associate Broker

(M): 315.727.3103

ssaleski@suttoncos.com

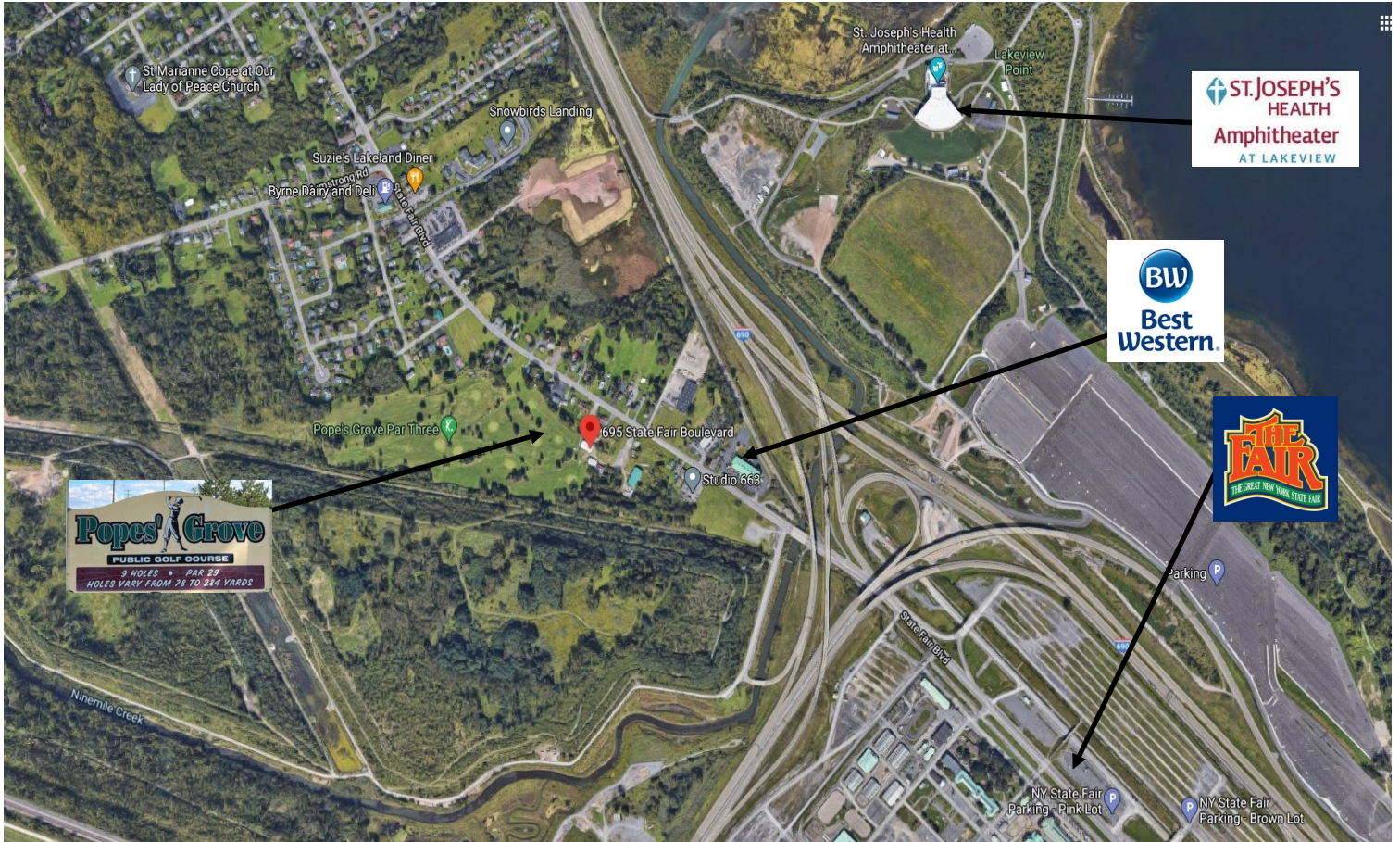
SUTTON REAL ESTATE COMPANY

525 Plum Street, Suite 100

Syracuse, New York 13204

315.424.1111

www.suttoncos.com



CONTACT EXCLUSIVE AGENT:

Stephen Saleski

Associate Broker

(M): 315.727.3103

ssaleski@suttoncos.com

SUTTON REAL ESTATE COMPANY

525 Plum Street, Suite 100

Syracuse, New York 13204

315.424.1111

www.suttoncos.com