



## PROPERTY FEATURES

- 18.64+/- acre site with 47,000+/- SF building shell
- 2+/- acre paved parking field in place
- 1,076' frontage on US Route 11
- Traffic counts of 9,748 daily
- Located 3 miles from I-81 and 25 minutes from Downtown Syracuse
- Adjacent 196 acre parcel available for sale
- Asking \$200,000

### CONTACT EXCLUSIVE AGENT:

**Stephen Saleski**

*Real Estate Salesperson*

315.727.3103

ssaleski@suttoncos.com

### SUTTON REAL ESTATE COMPANY

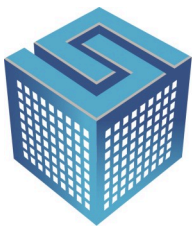
525 Plum Street, Suite 100

Syracuse, New York 13204

315.424.1111

[www.suttoncos.com](http://www.suttoncos.com)

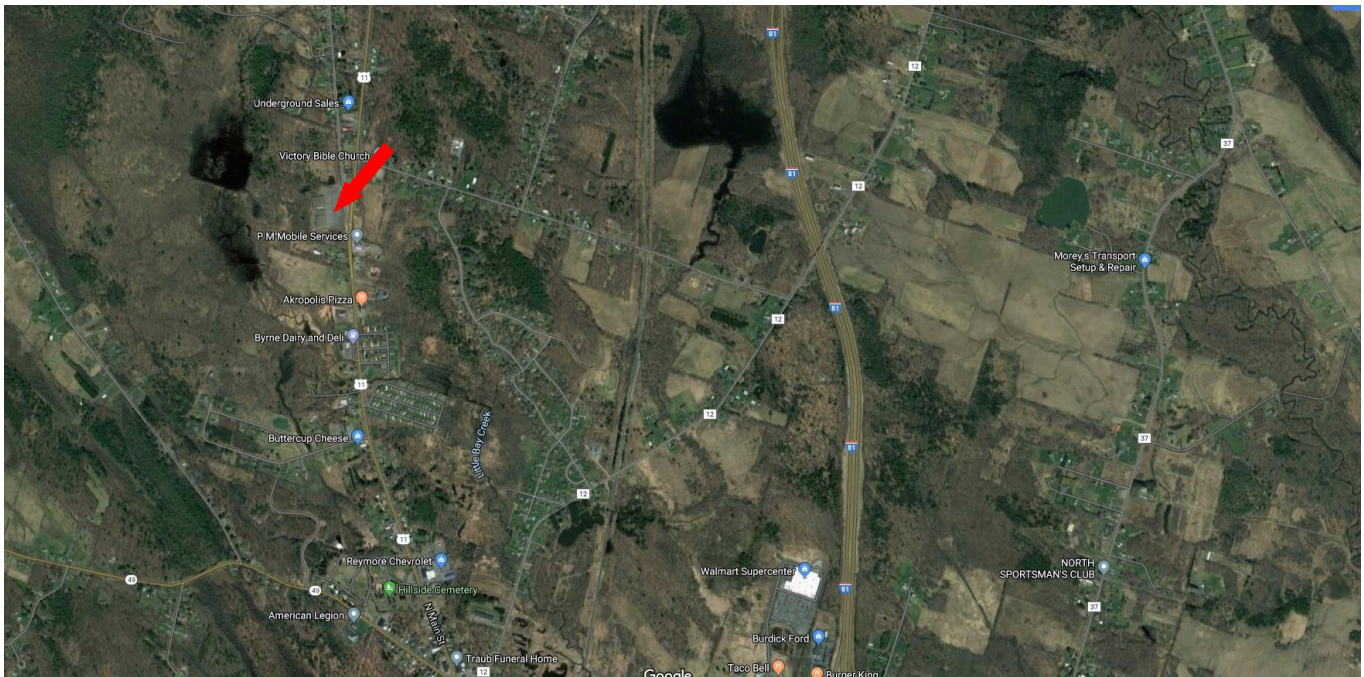




**SUTTON**  
REAL ESTATE COMPANY

**FOR SALE | REDEVELOPMENT, RETAIL**  
**FORMER NORTH COUNTRY PLAZA**

US Route 11, Central Square, NY 13036



**CONTACT EXCLUSIVE AGENT:**

**Stephen Saleski**

*Real Estate Salesperson*

315.727.3103

ssaleski@suttoncos.com

**SUTTON REAL ESTATE COMPANY**

525 Plum Street, Suite 100

Syracuse, New York 13204

315.424.1111

[www.suttoncos.com](http://www.suttoncos.com)

*All information contained herein is from sources deemed reliable and is submitted subjected to errors, omissions, changes in price or other conditions, prior sale, leasing without notice. Principals should not rely solely upon the information contained herein.*