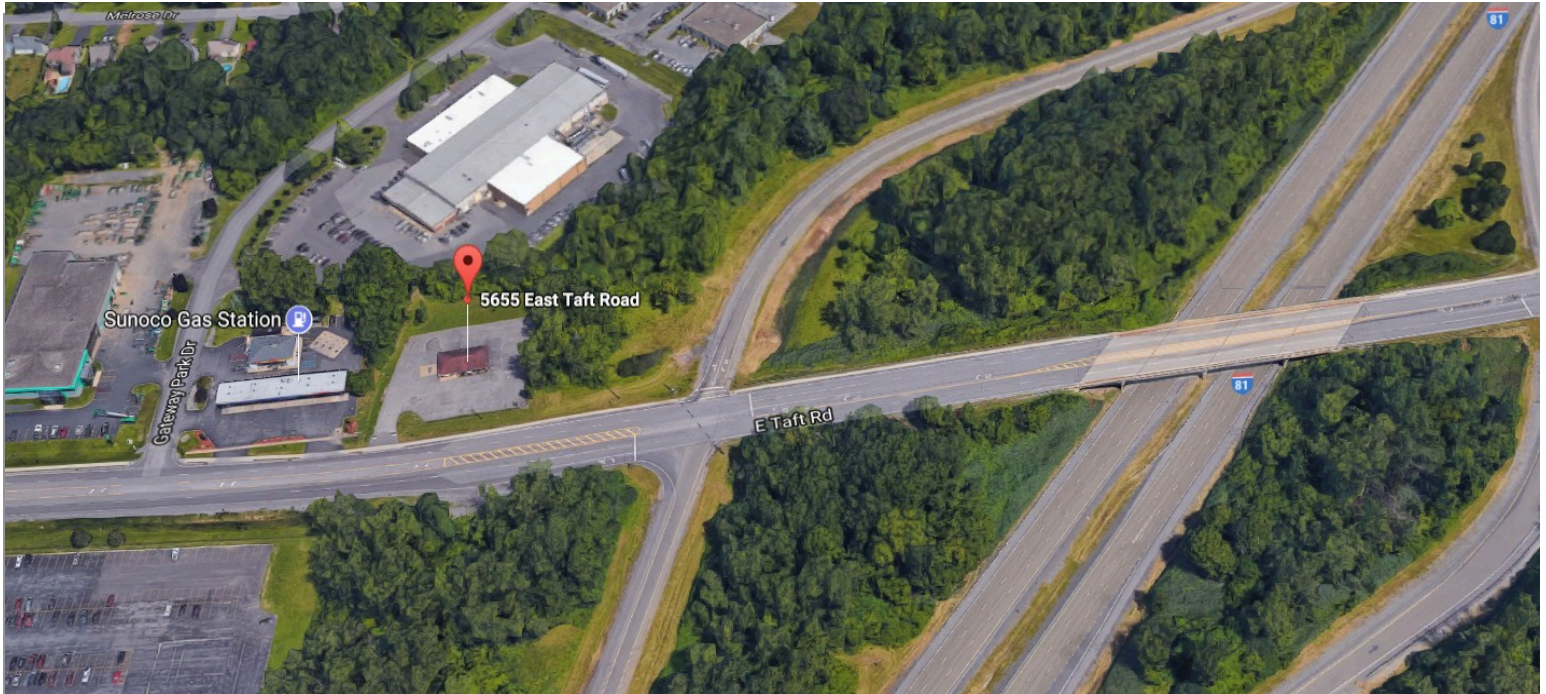


SUTTON
REAL ESTATE COMPANY

FOR SALE OR LEASE | LAND

5655 E Taft Rd, North Syracuse, NY 13212



PROPERTY FEATURES

- 1 acre on East Taft Road across from the North Syracuse Post Office
- 1,512 existing building on site
- Located and clearly visible next to the Interstate 81 Intersection
- Zoned commercial retail
- Close proximity to restaurants, banks, medical offices and more

CONTACT EXCLUSIVE AGENTS:

Karen Cannata-LaRocca

Real Estate Salesperson

Mobile 315.391.3409

klarocca@suttoncos.com

Bart Feinberg

Real Estate Associate Broker

Mobile 315.447.8668

bfeinberg@suttoncos.com

SUTTON REAL ESTATE COMPANY

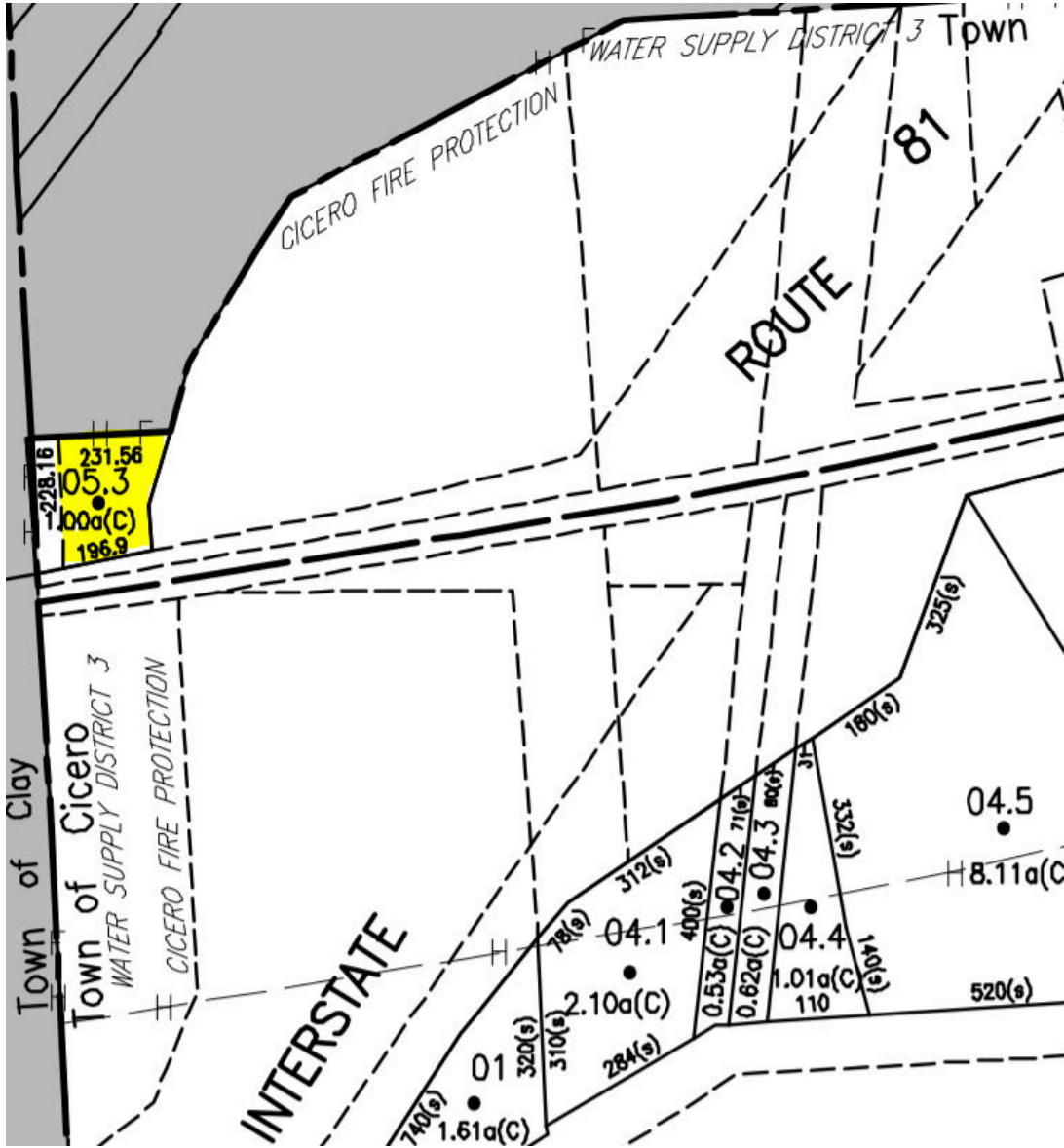
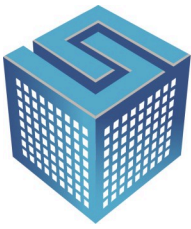
525 Plum Street, Suite 100

Syracuse, New York 13204

315.424.1111

www.suttoncos.com

All information contained herein is from sources deemed reliable and is submitted subjected to errors, omissions, changes in price or other conditions, prior sale, leasing without notice. Principals should not rely solely upon the information contained herein.



CONTACT EXCLUSIVE AGENTS:

Karen Cannata-LaRocca

Real Estate Salesperson

Mobile 315.391.3409

klarocca@suttoncos.com

Bart Feinberg

Real Estate Associate Broker

Mobile 315.447.8668

bfeinberg@suttoncos.com

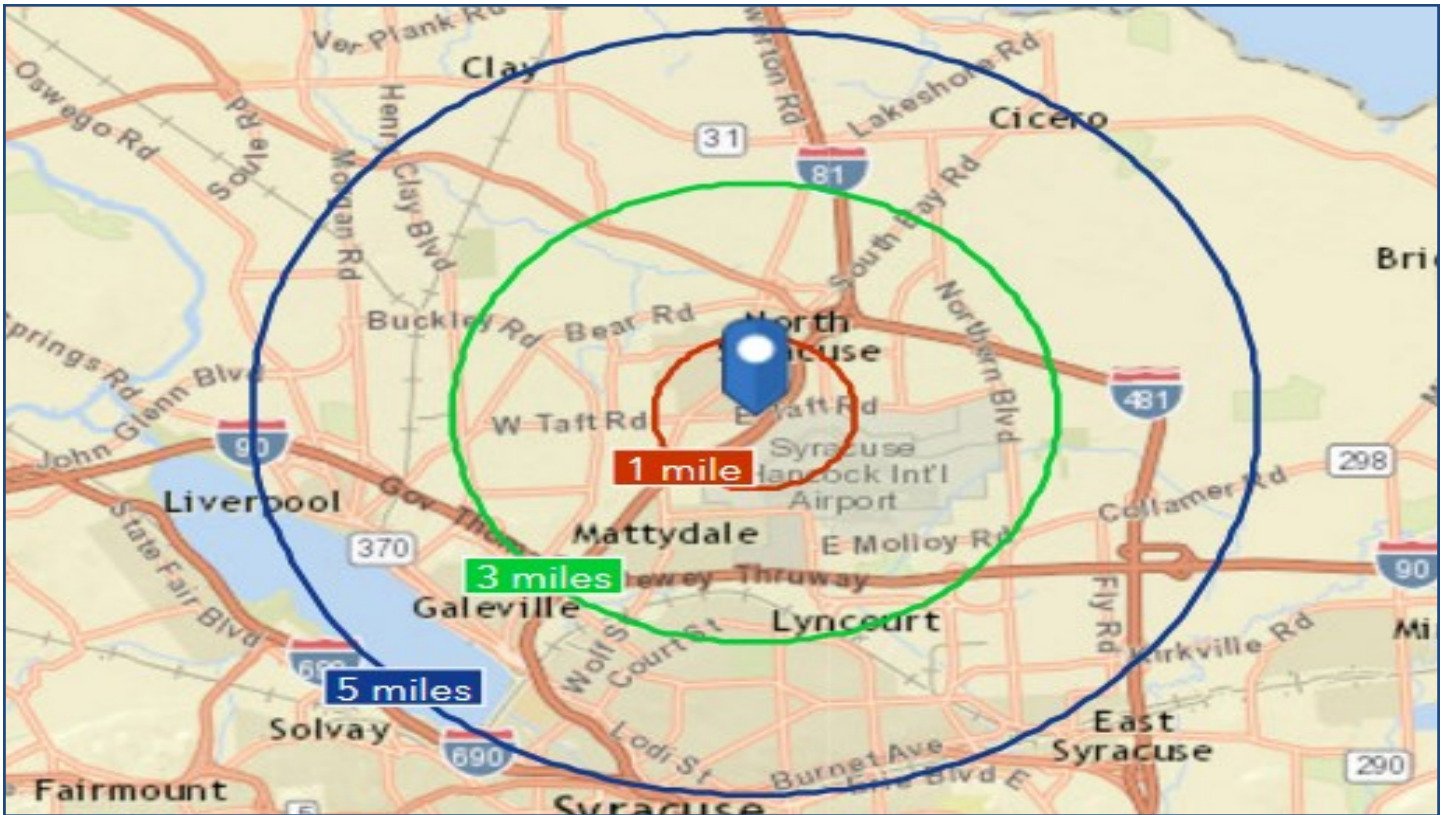
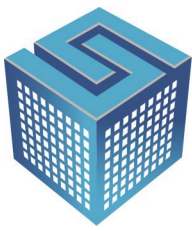
SUTTON REAL ESTATE COMPANY

525 Plum Street, Suite 100

Syracuse, New York 13204

315.424.1111

www.suttoncos.com



DEMOGRAPHICS

	1 Mile	3 Mile	5 Mile
Population	5,332	48,687	149,803
Households	2,526	20,672	63,50
Average Household Income	\$47,985	\$54,634	\$49,441
Businesses	6,682	45,884	112,351

Source: ESRI Report 8/10/17

TRAFFIC COUNTS

- Interstate Rt 81—61,734
- Taft Road (west of property)—16,964
- Taft Road (east of property)—17,094

Source: NYSDOT—AADT

CONTACT EXCLUSIVE AGENTS:

Karen Cannata-LaRocca
Real Estate Salesperson
Mobile 315.391.3409
klarocca@suttoncos.com

Bart Feinberg
Real Estate Associate Broker
Mobile 315.447.8668
bfeinberg@suttoncos.com

SUTTON REAL ESTATE COMPANY

525 Plum Street, Suite 100
Syracuse, New York 13204
315.424.1111
www.suttoncos.com