

**SUTTON**  
REAL ESTATE COMPANY

**FOR LEASE | FLEX, RETAIL**

2700 Lemoyne Avenue, Syracuse, NY 13211



## PROPERTY FEATURES

- Office/Flex/Retail Space
- One 2,380 +/- SF suite available consisting of:
  - 1,000 +/- SF office/retail space with kitchenette
  - 1,200 +/- SF warehouse with 8'X10' overhead door
  - 180 +/- SF of additional storage
- 5 parking spaces plus on-street parking available
- 92' of frontage on heavily traveled Lemoyne Ave
- Great location—easy access to NYS Thruway & I-81
- On bus line

### CONTACT AGENT:

**Karen Cannata-LaRocca**

*Real Estate Salesperson*

(M):315.391.3409

[klarocca@suttoncos.com](mailto:klarocca@suttoncos.com)

### SUTTON REAL ESTATE COMPANY

525 Plum Street, Suite 100

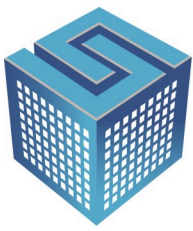
Syracuse, New York 13204

315.424.1111

[www.suttoncos.com](http://www.suttoncos.com)

*All information contained herein is from sources deemed reliable and is submitted subjected to errors, omissions, changes in price or other conditions, prior sale, leasing without notice. Principals should not rely solely upon the information contained herein.*

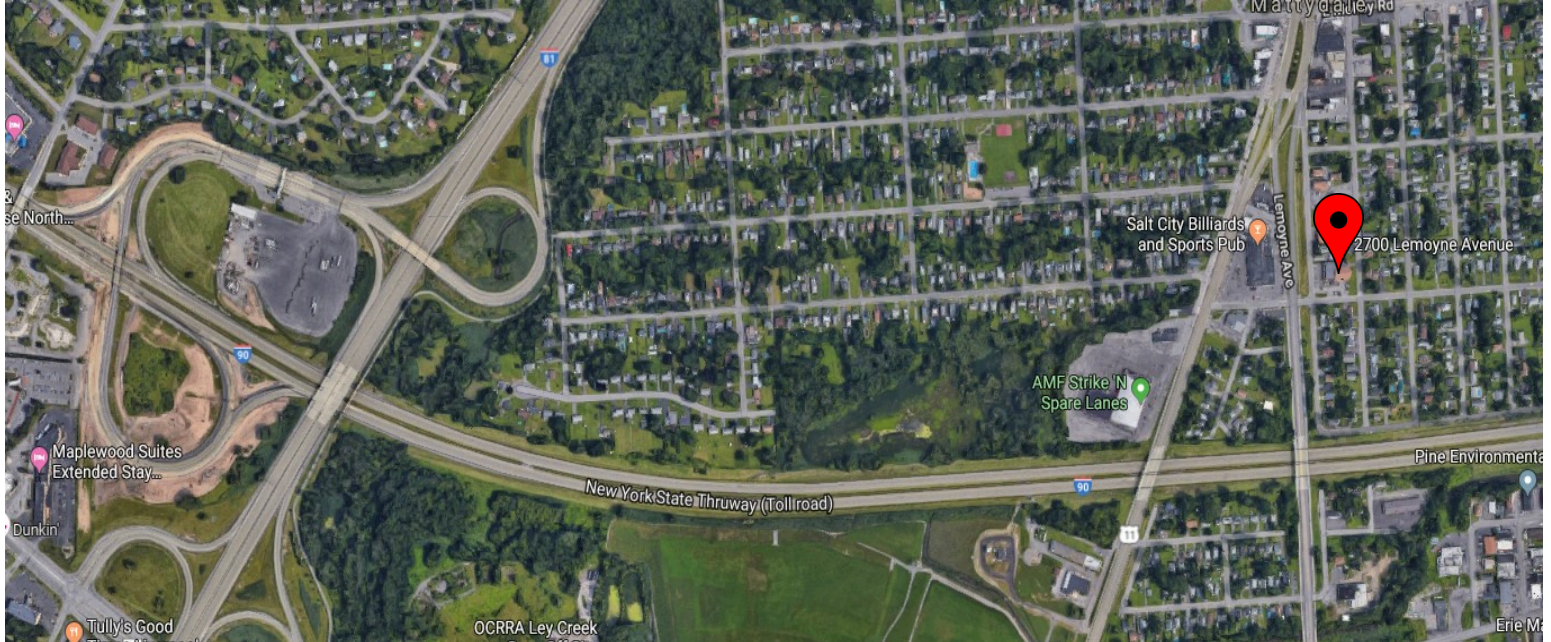




**SUTTON**  
REAL ESTATE COMPANY

**FOR LEASE | FLEX, RETAIL**

2700 Lemoyne Avenue, Syracuse, NY 13211



**CONTACT AGENT:**

**Karen Cannata-LaRocca**

*Real Estate Salesperson*

(M):315.391.3409

[klarocca@suttoncos.com](mailto:klarocca@suttoncos.com)

**SUTTON REAL ESTATE COMPANY**

525 Plum Street, Suite 100

Syracuse, New York 13204

315.424.1111

[www.suttoncos.com](http://www.suttoncos.com)

*All information contained herein is from sources deemed reliable and is submitted subject to errors, omissions, changes in price or other conditions, prior sale, leasing without notice. Principals should not rely solely upon the information contained herein.*