



PROPERTY FEATURES

- 3,406 +/- SF Building consisting of 3,330 +/- SF warehouse, 6' X 12" office and one half bath
- One 12' X 8' overhead door
- One platform dock with 8' X 6' door
- 200 AMP—3 phase power
- 10' clear span ceilings
- 8—10 car parking
- Close proximity to Route 690 & NYS Thruway

CONTACT EXCLUSIVE AGENT:

Karen Cannata-LaRocca

Licensed Salesperson

Mobile 315.391.3409

klarocca@suttoncos.com

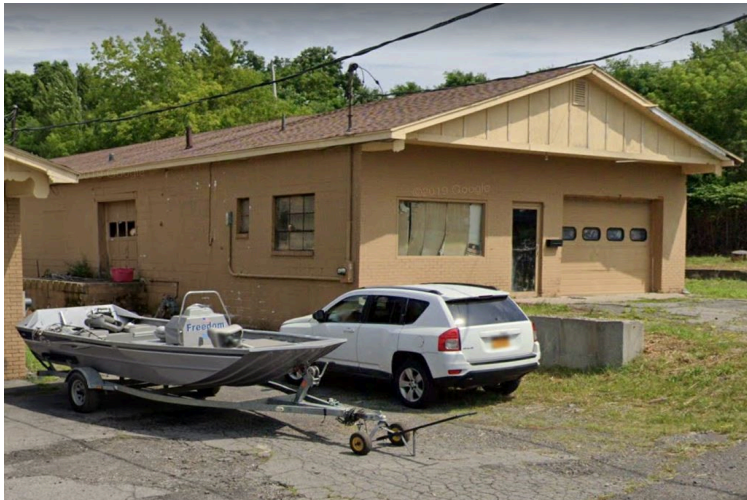
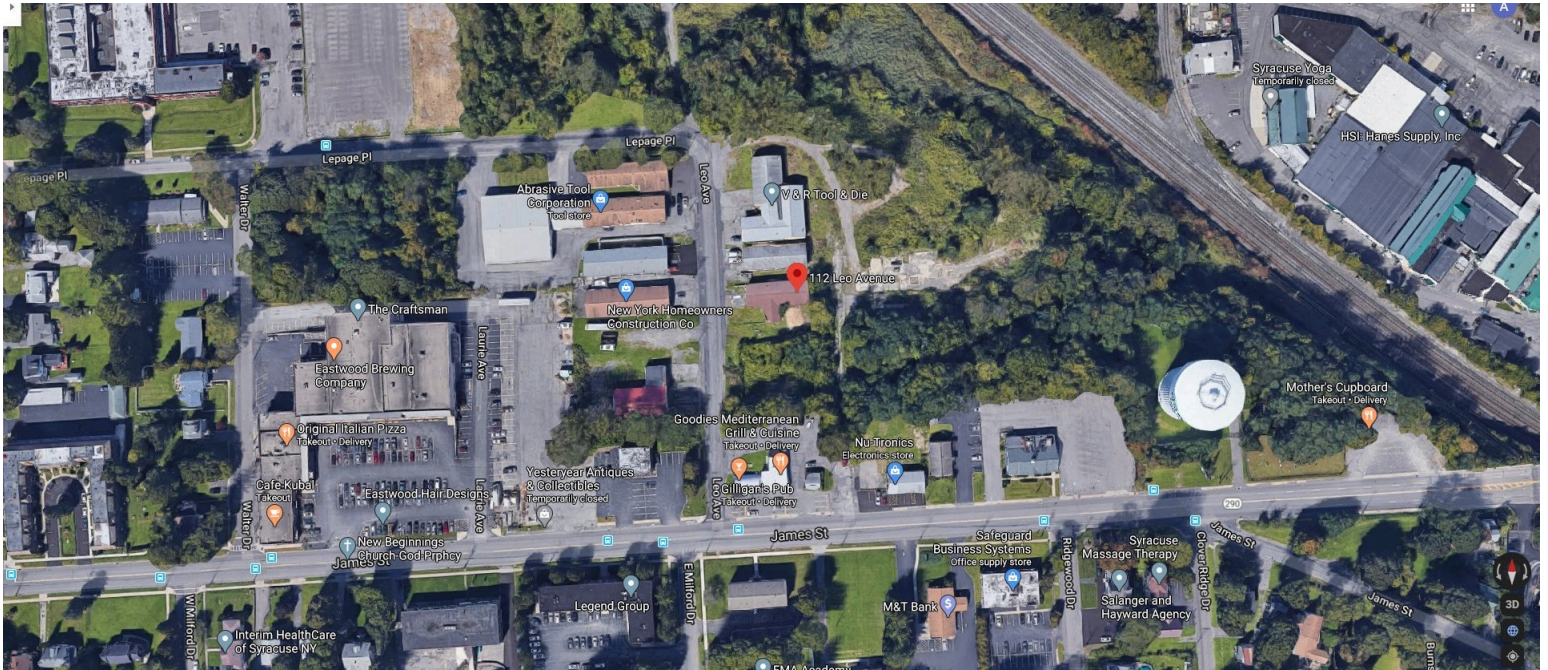
SUTTON REAL ESTATE COMPANY

525 Plum Street, Suite 100

Syracuse, New York 13204

315.424.1111

www.suttoncos.com



CONTACT EXCLUSIVE AGENT:

Karen Cannata-LaRocca

Licensed Salesperson

Mobile 315.391.3409

klarocca@suttoncos.com

SUTTON REAL ESTATE COMPANY

525 Plum Street, Suite 100

Syracuse, New York 13204

315.424.1111

www.suttoncos.com