

SUTTON
REAL ESTATE COMPANY

FOR SALE | DEVELOPMENT SITE

Thompson Rd. & Northern Blvd., North Syracuse, NY 13212



PROPERTY FEATURES

- 1.50 +/- Acres Zoned General Commercial
- Retail or Office
- 200' Access to Thompson Rd.
- Additional 3+/- acre contiguous parcel available
- Level, corner parcel with high visibility
- One mile from I-481
- Sale Price: \$199,000

CONTACT EXCLUSIVE AGENT:

Stephen Saleski

Real Estate Associate Broker

315.727.3103

ssaleski@suttoncos.com

SUTTON REAL ESTATE COMPANY

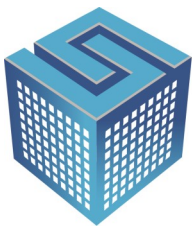
525 Plum Street, Suite 100

Syracuse, New York 13204

315.424.1111

www.suttoncos.com

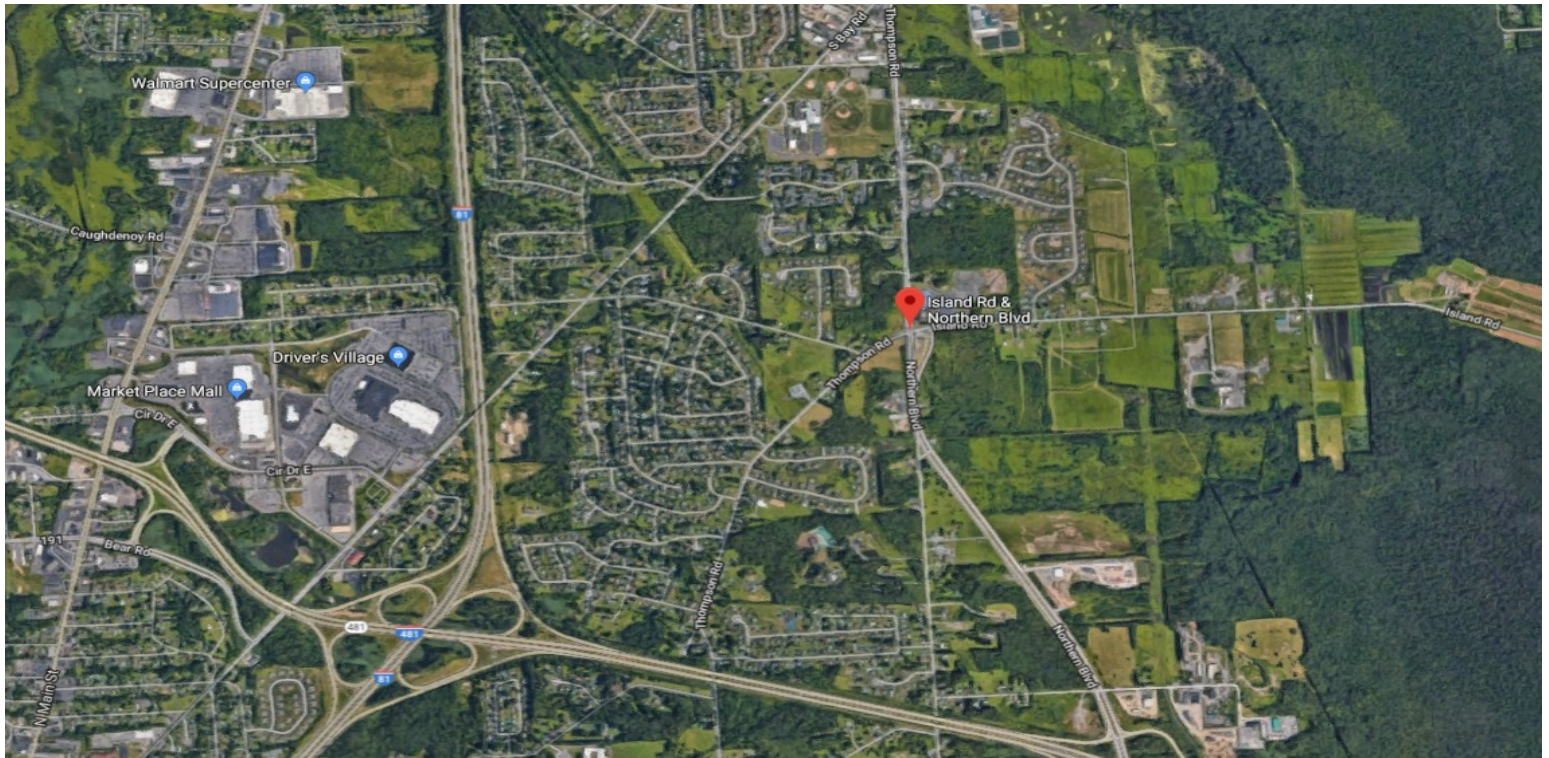
All information contained herein is from sources deemed reliable and is submitted subjected to errors, omissions, changes in price or other conditions, prior sale, leasing without notice. Principals should not rely solely upon the information contained herein.



SUTTON
REAL ESTATE COMPANY

FOR SALE | DEVELOPMENT SITE

Thompson Rd. & Northern Blvd., North Syracuse, NY 13212



DEMOGRAPHICS

	1 Mile	3 Mile	5 Mile
Population	4,446	32,953	68,684
Households	1,772	13,042	27,749
Median Household Income	89,309	86,100	83,188

Source: ESRI

TRAFFIC COUNTS

- Northern Blvd.—8,571
- Thompson Rd. North—7,445
- Thompson Rd. South—2,365

Source: ESRI

CONTACT EXCLUSIVE AGENT:

Stephen Saleski

Real Estate Associate Broker

315.727.3103

ssaleski@suttoncos.com

SUTTON REAL ESTATE COMPANY

525 Plum Street, Suite 100

Syracuse, New York 13204

315.424.1111

www.suttoncos.com

All information contained herein is from sources deemed reliable and is submitted subjected to errors, omissions, changes in price or other conditions, prior sale, leasing without notice. Principals should not rely solely upon the information contained herein.