



PROPERTY FEATURES

- 3,500+ SF, highly visible office or retail building on Burnet Ave.
- Office space consists of a reception area, conference room, private offices, bull pen area and break room
- Easy access to Rt. 690 and Downtown Syracuse
- 5-10 on-site parking spaces
- Space can easily be converted to retail
- Many amenities nearby, including banks, retail, services & restaurants
- Asking \$180,000

CONTACT EXCLUSIVE AGENT:

Karen Cannata-LaRocca

Real Estate Salesperson

(M): 315.391.3409

klarocca@suttoncos.com

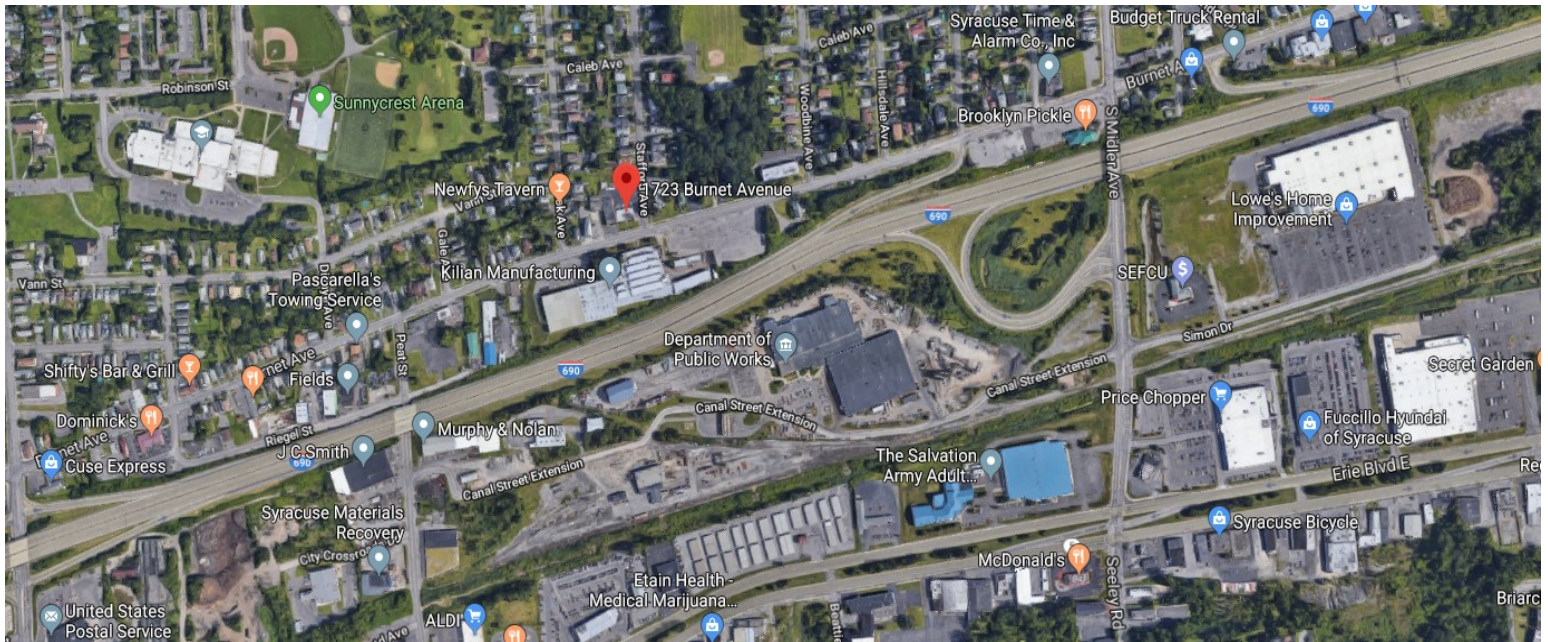
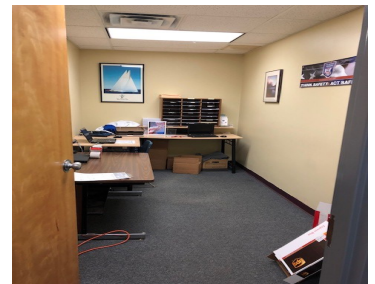
SUTTON REAL ESTATE COMPANY

525 Plum Street, Suite 100

Syracuse, New York 13204

315.424.1111

www.suttoncos.com



CONTACT EXCLUSIVE AGENT:

Karen Cannata-LaRocca

Real Estate Salesperson

(M): 315.391.3409

klarocca@suttoncos.com

SUTTON REAL ESTATE COMPANY

525 Plum Street, Suite 100

Syracuse, New York 13204

315.424.1111

www.suttoncos.com