

PROPERTY FEATURES

- Selkirk Beach 6.43 +/- Acre Development Parcel with 50' waterfront
- Frontage at mouth of the Salmon River at Lake Ontario with world class fishing
- Waterfront 1,294 +/- SF seasonal cottage on .35 acre zoned Rural Cottage (RC)
- Vacant 6.08 +/- acres zoned Rural Recreation (RR)
- Preliminary site plan and perc testing done for an 18 unit townhouse development
- Also ideal for private lodge or residential development

CONTACT EXCLUSIVE AGENTS:

Barton K. Feinberg

Real Estate Associate Broker

(M): 315.447.8668

bfeinberg@suttoncos.com

Stephen Saleski

Real Estate Associate Broker

(M): 315.727.3103

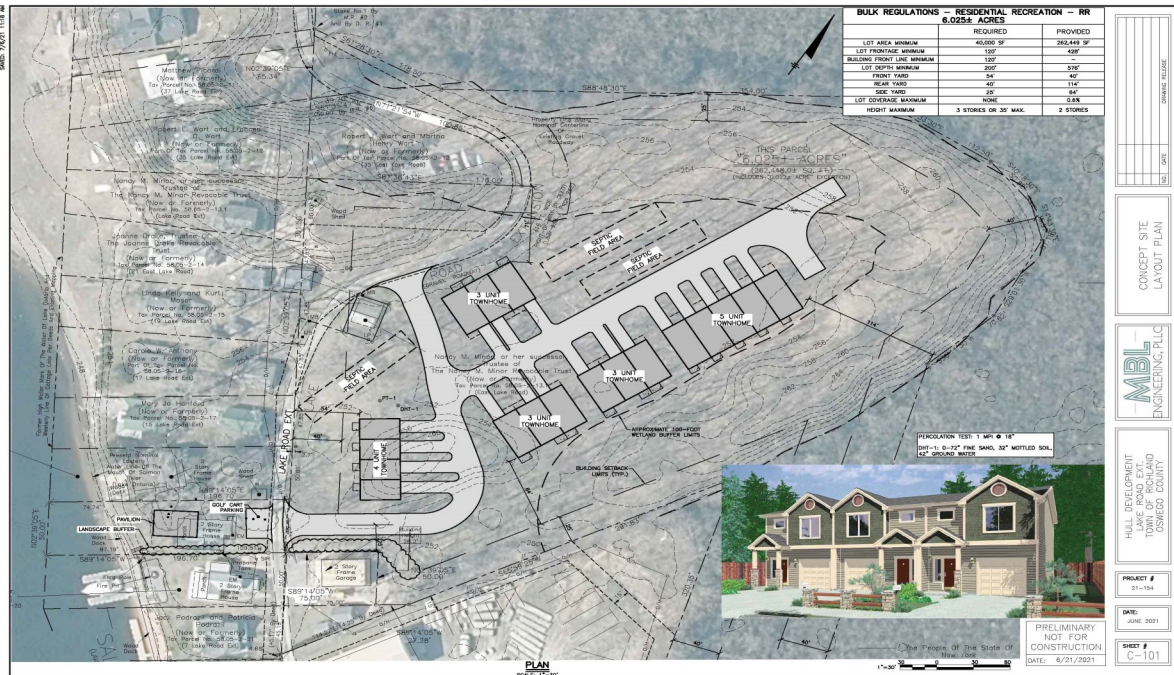
ssaleski@suttoncos.com

SUTTON REAL ESTATE COMPANY

525 Plum Street, Suite 100

Syracuse, New York 13204

315.424.1111



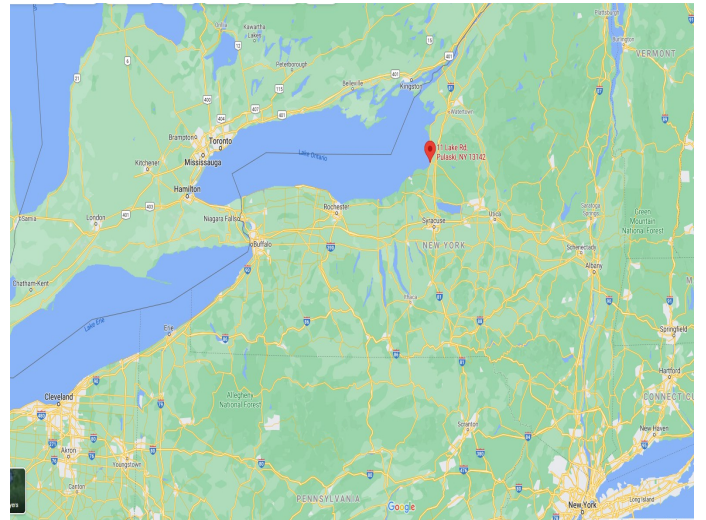
CONTACT EXCLUSIVE AGENTS:

Barton K. Feinberg
Real Estate Associate Broker
(M): 315.447.8668
bfeinberg@suttoncos.com

Stephen Saleski
Real Estate Associate Broker
(M): 315.727.3103
ssaleski@suttoncos.com

SUTTON REAL ESTATE COMPANY

525 Plum Street, Suite 100
Syracuse, New York 13204
315.424.1111



CONTACT EXCLUSIVE AGENTS:

Barton K. Feinberg

Real Estate Associate Broker

(M): 315.447.8668

bfeinberg@suttoncos.com

Stephen Saleski

Real Estate Associate Broker

(M): 315.727.3103

ssaleski@suttoncos.com

SUTTON REAL ESTATE COMPANY

525 Plum Street, Suite 100

Syracuse, New York 13204

315.424.1111